



**Biobank-enabled Clinical Diagnostics and Personalized Medicine**

***CATALYZING DRUG AND BIOMARKER DEVELOPMENT USING  
INSIGHTS FROM HUMAN PATIENT SAMPLES AND CLINICAL DATA***

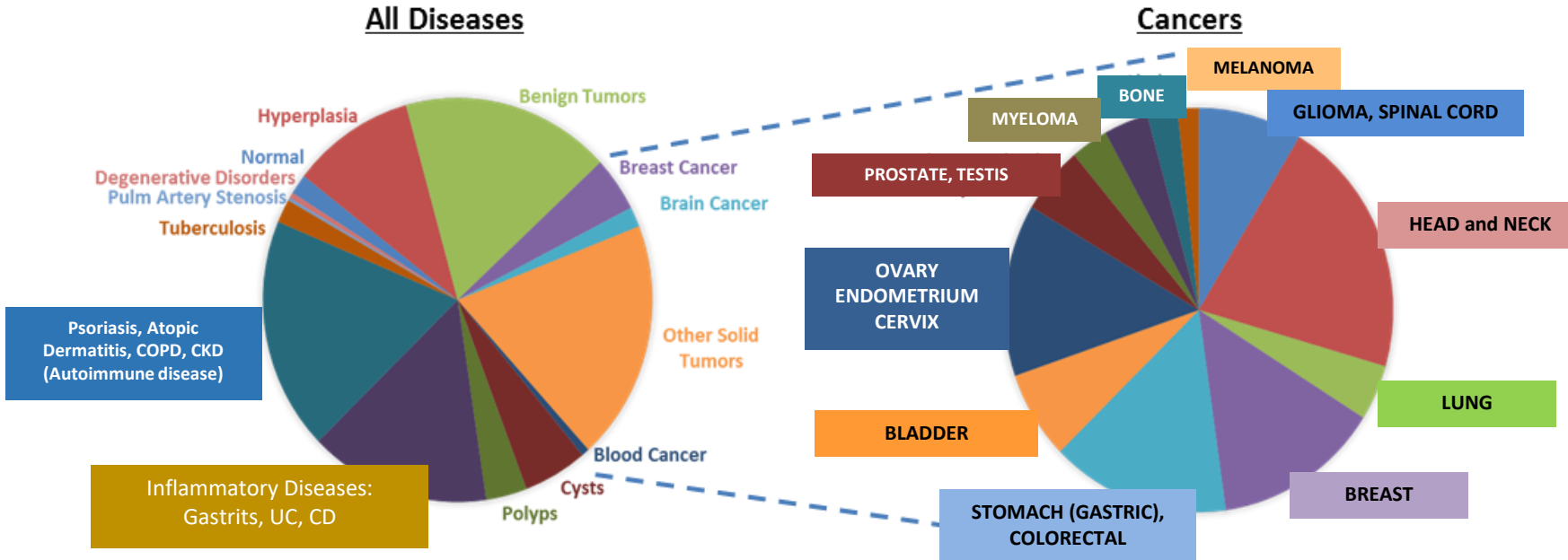
***"FROM THE PATIENT >> TO THE PATIENT"***

***[www.sapienbio.co.in](http://www.sapienbio.co.in)***

# Sapien is Among the World's 10 Largest, Multi-Diseases Biobank

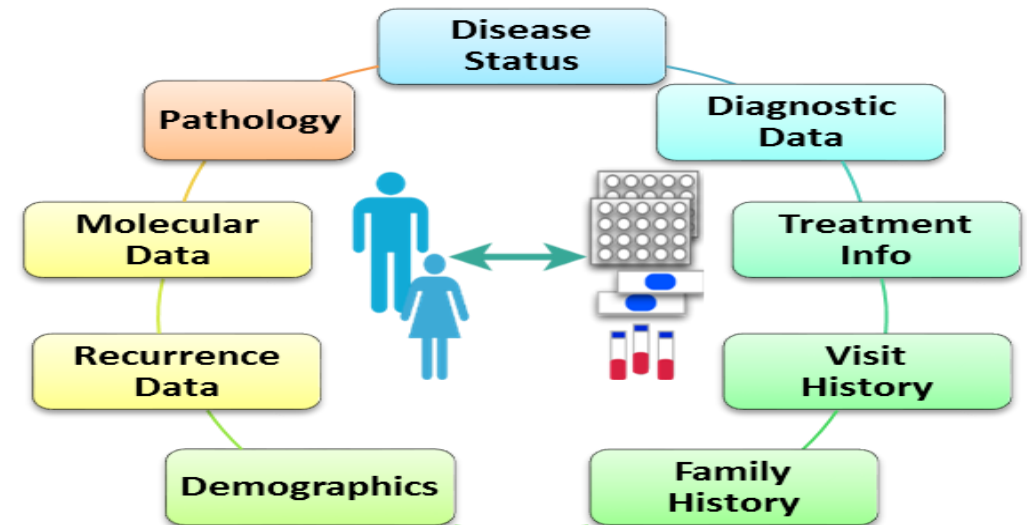


## Biobank Sample/Disease Diversity



**Samples and Data for >300,000 Patients, across All Diseases, (~50,000 being Cancer Cases), making Sapien one of the 10 largest biobanks in the world**

**Samples & Data are collected as per internationally accepted protocols with IRB approvals in place.**  
**Samples used for NGS, IHC, FISH, whole slide Images for AI ML, Liquid biopsy, Cell Assays, FACS, ELISAs by Global pharma (See testimonials slide 15)**  
**Export process for Samples, Data, Images – all worked out**





# Key Advantages of Sapien in 'omics

UK Biobank (UKB), and FinnGen (FG), are 2 large PPP consortia with 500K (~300K in FG) people's samples, longitudinal outcomes data (Phenotype data), combined with genomic data

*Sapien is uniquely positioned to be **THE** Asian partner with many advantages over UKB & FG*

## UK Biobank, FinnGen

- a) **Age range Limited:** 40-69 years
- b) **Caucasian only**
- c) **Low Diversity :** UK, Finland are both small, Island nations with low geographic, environmental, dietary diversity - homogenous population
- d) **Heavily Pre-treated patients more common**
- e) **Low volume of patients :** small populations

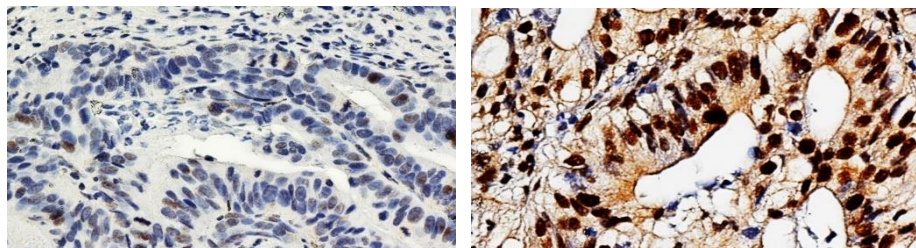
## Sapien biobank's Differentiators and Tremendous Potential

- a) **Age range VERY HIGH :** Sapien samples span <1 month to 102 years
- b) **Asian :** Addresses the gap of <5% global 'omic data being from Asia / Africa
- c) **High diversity :** India is the 7<sup>th</sup> largest country, with varied climate, lifestyle, food & microbiome – heterogeneity needed available @ Sapien biobank
- d) **Treatment-naïve patients common in India :** desirable for 'Omic studies
- e) **High volume of patients:** India is the world's 2<sup>nd</sup> most populous country (**China doesn't allow samples to be exported so only Sapien can enable access to the largest population in the world**), with 72+ hospitals network
- f) **Even Rare diseases :** Higher volume in India than elsewhere in the world due to sheer size of the population

# Testimonials from Clients & Collaborators : Details Available on Request



Ando K, Hamade Y et al. 2018. Developing a Phosphospecific IHC Assay as a Predictive Biomarker for Topoisomerase I Inhibitors.



Topoisomerase treatment response **predictive marker** in CRC  
Non-responder (left) Responder (right)

**OncoBloc™**

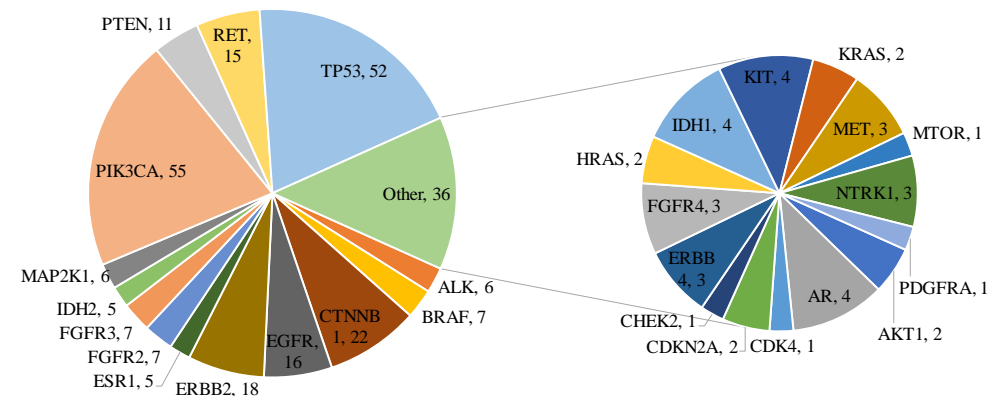


**OncoPrime™**

Boston-based Botanicals drug company

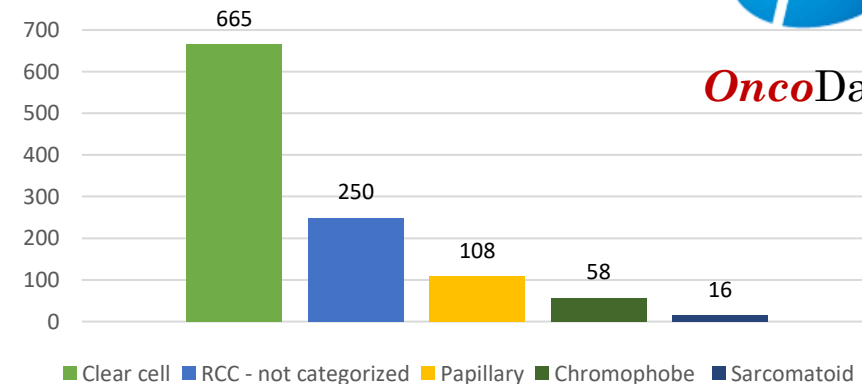
*"We approached Sapien because of their unique expertise and their **library of patient-derived tumor tissues**. Sapien's work is flawless and world-class and helped us get insights into the potencies of our drug candidates. **Sapienbio's 2D and 3D models are exactly what we needed**. The data that Sapien generated is part of our regulatory submission package."*

**ThermoFisher**  
SCIENTIFIC



OncoMine NGS gene panel data using Sapien's Breast Cancer blocks: SNVs

Renal Cell Carcinoma - Histotype



**OncoData**

Real World Data on treatment choices of 1097 Renal Cancer cases, including 215 post-recurrence cases

# Sapien Accesses High Volume of Patients, Pan-India, through 70+ Apollo Hospitals



## Number of Patients accessible to Sapien from 73 hospitals of Apollo

- Inpatient : 10,250 beds  
470,000 patients/year
- Outpatient : 4.3 Million patients/year

**All Formats and Variety of Samples Available:**  
FFPE blocks, flash-frozen tissue, normal controls  
matched plasma/serum, blood cells, live cells etc

# Distribution of Diseases (in %) : Examples to showcase NCDs



ICD 10 Code	Diagnosis	Hosp 1	Hosp 2	Hosp 3
A	Infectious diseases	9	5	4
B	Infectious diseases	2	1	2
C	Cancer	9	27	4
D	Blood diseases including immune disorders	5	7	7
E	Endocrine, nutritional, metabolic diseases	20	18	33
F	Mental disorders	0	0	0
G	Nervous system	3	3	2
H	Eye, ear, mastoid diseases	6	2	2
I	Heart and circulatory	16	12	14
J	Respiratory	5	3	5
K	Digestive system	9	8	10
L	Skin and subcutaneous tissues	1	1	2
M	Musculoskeletal, orthopedics	7	4	9
N	Genitourinary, Kidney, Renal	7	9	6
	Others	0.6	0.3	0.3
	Total (in Percent)	100	100	100
	<b>Average Yearly In-Patient Volume (approx)</b>	<b>12000</b>	<b>20000</b>	<b>18000</b>

# Patient Datasets Available to Sapien from our Partner Hospitals

---



1. Medical History : Partially available.
2. Visit diagnoses: ICD10 diagnosis code available up to 1 decimal point e.g., C50.9 for breast cancer
3. Medications: Usually available.  

Hospital Formulary List available for Indian brands for the most commonly used medications, stated in their generic form e.g., brand name Glivec (Gleevec in USA), generic name used in India is Imatinib which will be available
4. Procedures: Mostly available.
5. Demographics : Available. Typically includes vital signs, weight, height, BP (systole, diastole), age, gender.
6. Social history: Not commonly available.
  - Being collected manually for specific projects
7. Laboratory values: Mostly available.
8. Radiology : Summary of report usually available.
9. Treatment & Follow-up Data : Integrated from medical records and data sources, manually curated & coded

# OncoBloc™ : Sapien's FFPE Block Inventory in Solid Cancers



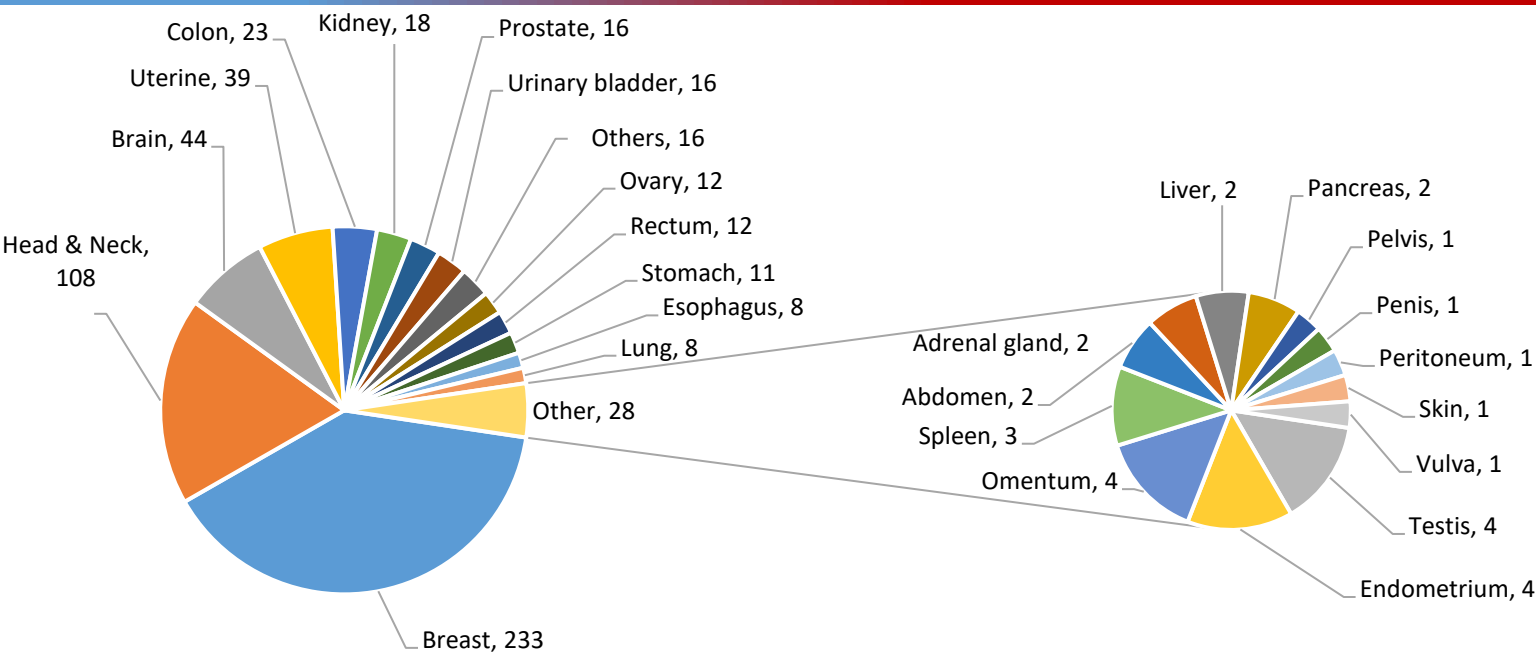
INVENTORY OF SOLID CANCERS			
Disease	Total	Biopsies	Resections
Brain	1600	400	1200
Breast	5600	80	5520
Cervix	325	300	25
Colorectal	3500	1600	1900
Endometrial	490	140	360
Esophagus	270	225	45
Gastric	400	250	270
Head & Neck	3500	900	2600
Kidney	560	90	470
Liver	200	150	50
Lung	290	150	140
Lymphoma	900	750	150
Ovary	570	70	500
Pancreas	265	150	150
Prostate	2000	1200	1000
Thyroid	950	100	850
Urinary bladder	400	150	250
Uterine	200	120	80
Other cancers	>2500		

- >55000 cancer cases' samples available with demographic and diagnostic details
- Treatment and outcomes data available in breast, lung, CRC, renal, H&N cancers, can be added for other cancers
- Gene mutation data available for ~1200 cancer cases
- Adjacent Normal FFPE tissue available for most cancers except Brain  
- Tissues from *non-cancer* patients also available as normal control
- Matched sets of pre- and post-NACT blocks available.
- Matched sets of primary and metastatic tumor blocks available.
- IHC services available for commercial or client-provided antibodies
- High resolution digital images for digital pathology, ML, AI  
e.g., 1000 breast cancers with matched H&E ER,PR,Her2, Ki67  
~600 different cancers with H&E, MSI by IHC
- Samples provided as blocks, unstained sections, H&E-stained slides, curls, DNA/RNA, or scanned slide images.





# OncoBloc™ : Sapien's Flash Frozen Inventory in Cancers



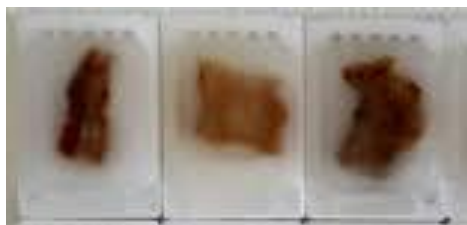
Organ	No of cases	Percentage (>1%)
Breast	233	39.4
Head & Neck	108	18.2
Brain	44	7.4
Uterine	39	6.6
Colon	23	3.9
Kidney	18	3.0
Prostate	16	2.7
Urinary bladder	16	2.7
Others	16	2.7
Ovary	12	2.0
Rectum	12	2.0
Stomach	11	1.9
Esophagus	8	1.4
Lung	8	1.4

Organ	No of cases	Percentage (<1%)
Testis	4	0.7
Endometrium	4	0.7
Omentum	4	0.7
Spleen	3	0.5
Abdomen	2	0.3
Adrenal gland	2	0.3
Liver	2	0.3
Pancreas	2	0.3
Pelvis	1	0.2
Penis	1	0.2
Peritoneum	1	0.2
Skin	1	0.2
Vulva	1	0.2

# Sapien : Ideal Asian Genomics Partner



1. Sapien is prospectively collecting blood and tissue samples from solid cancers to enable large Genomics projects with consented Samples and Structured, Coded, Treatment and Outcomes data
2. Sapien can collect solid and hematological cancers – inclusion/exclusion criteria details to be shared by client
3. Deep learning possible with our Curated high quality samples & data
  - Matched tissue + Blood/ Plasma + Scanned Pathology slide images + Genomics data + Treatment & Outcomes data



Glass Slide



Digital Whole Slide

## Real-Time Patient Data – IP + OP

1	Demographics
2	Family history, smoking history etc
3	Diagnostic reports – Integrate Pathology, Mol Bio, Hematol, Radiology, outsourced markers
4	Scanned slides images
5	Surgery details, Discharge Summary
6	Stage and Grade
7	Treatment: Chemo, Radiation, Targeted, Palliative, co-meds
8	Response to Treatment – Lab reports, Radiology, Dx
9	5 year survival – DFS, OS
10	Recurrence, if any, and treatment for recurrence
11	Gene mutations and variations - Genomics



# Sapien Polyglot Leadership Team – Internationally Experienced



## Dr. Jugnu Jain – CEO, Co-Founder

- PhD - Cambridge UK, Post-doc - Dana Farber & Harvard Medical School
- 14 years Drug Discovery experience @ Vertex Pharmaceuticals, Boston
- Knows Pharma's need for translation and gaps therein very well
- 10 years' business experience commercializing Sapien with Global Companies



## Dr. Soma Chatterjee – Director, Biobank & Ethics

- PhD – Chonnam Nat'l Univ, S Korea & Business Strategy – IIFT, India
- 20 years experience at Lonza and other companies, specifically sourcing and providing quality human samples ethically, to Global businesses
- Also Leads ethical compliance, Liaison with Govt agencies and IRBs, well-versed in government regulations



**Lonza**



## Dr. Rakesh Sharma – Scientist, Lab Assays

- PhD – Ruprecht-Karls-University & DKFZ, Germany
- 10+ years experience in cancer and immune biology
- Adept in patient tissue-based Primary cell establishment, including co-culture assays, FACS, ELISAs, Crispr-Cas9 gene editing, drug screening, target and biomarker studies
- Skilled in IF, confocal, live image microscopy and pathology techniques



RUPRECHT-KARLS-  
UNIVERSITÄT  
HEIDELBERG

**dkfz.**

# Sapien: A Differentiated CRO



- Multi-disease Biobank that combines personalized medicine products and drug discovery services for Pharma & Diagnostic companies
- Many types of patient samples and data for customized genomics, molecular, cellular, pathology assays for validating drugs, drug targets and predictive biomarkers
- Real World Evidence (RWE), data to support preclinical and clinical decision-making and patient stratification
- Export process, complying with ethical guidelines is well-established.  
Long-term partnerships with reputed global R&D Pharma / Biotech companies
- Promoted by experienced scientist entrepreneurs with track record of international Pharma drug development and Global business experience

# Thank you

---



Please contact us at :

[Jugnu@sapienbio.com](mailto:Jugnu@sapienbio.com)

[Queries@sapienbio.com](mailto:Queries@sapienbio.com)

**Meet in-person at BIO, 5-8<sup>th</sup> June 2023 at Boston**

# Vision and Mission

---



## Sapien's Vision:

- A premier bioscience enterprise at the interface of healthcare and life sciences, with clinically relevant products, platforms and services, enabling the development of personalized drugs and diagnostics to improve patient lives.

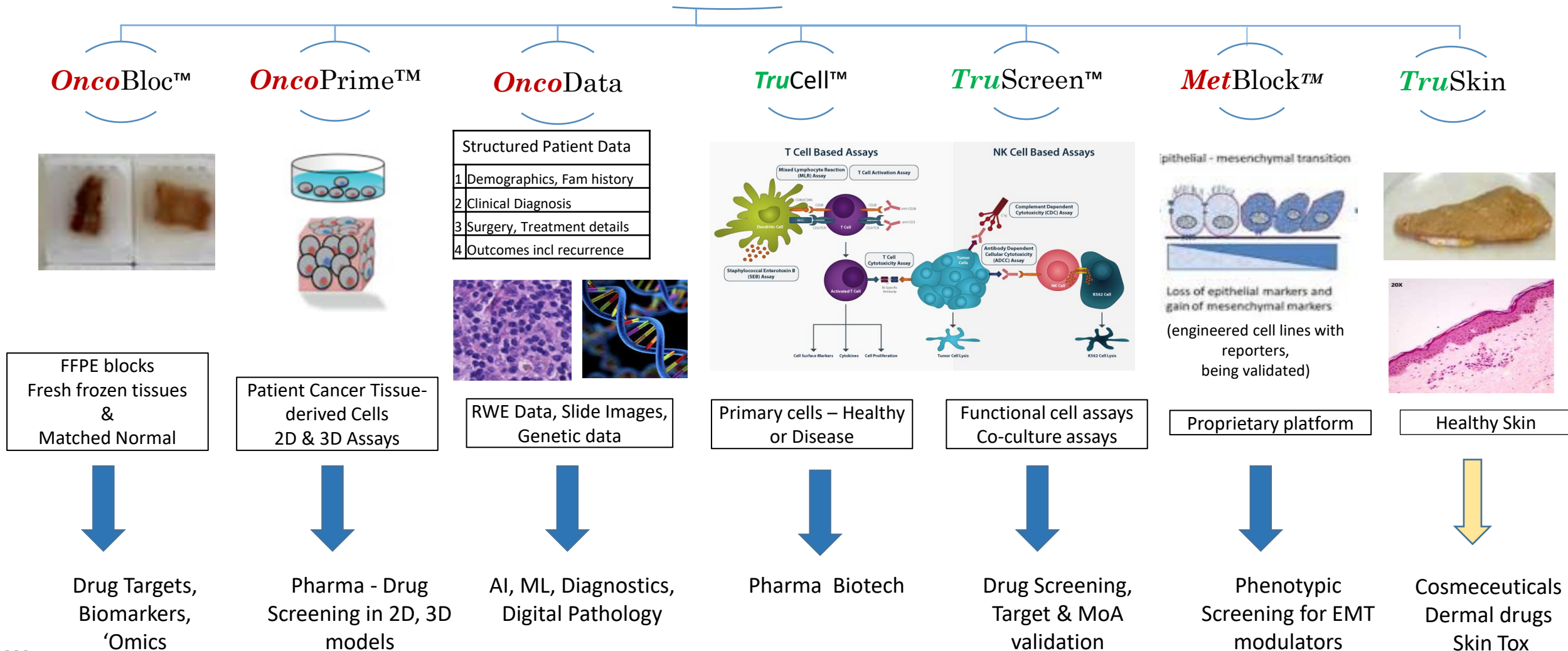
## Sapien's Mission:

- Build a world-class biobank archiving ethically obtained, high quality patient samples and clinical data based in India.
- Harness biobank assets for the development of clinically important products with Pharma, Diagnostics, Genomics and Data Science partners.
- Mine longitudinal Outcomes data to optimize patient care at each stage - earlier detection, personalized treatment, monitoring of disease progression.



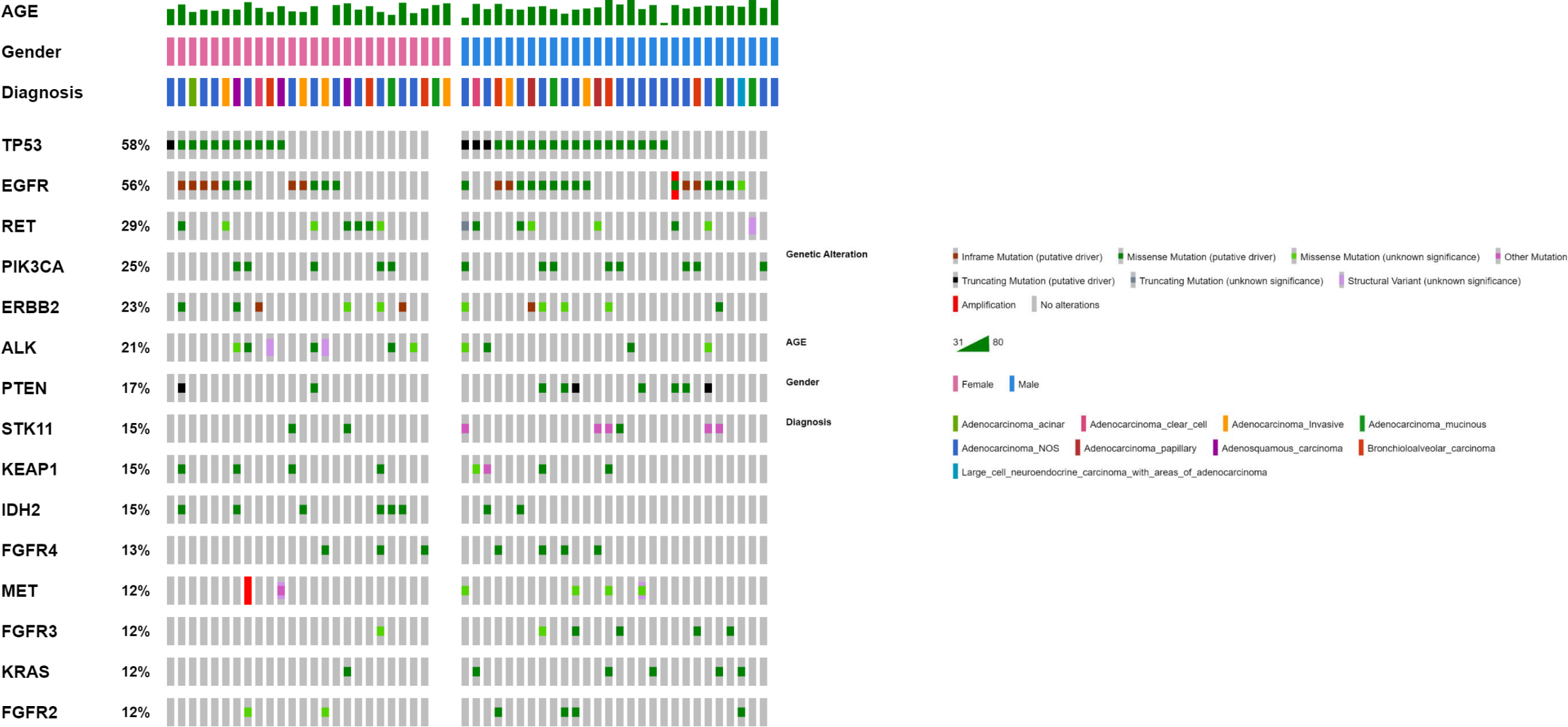
# Sapien's Products & Services

R&D Platforms established using Patient as well as Healthy Human Samples and Associated Medical Data



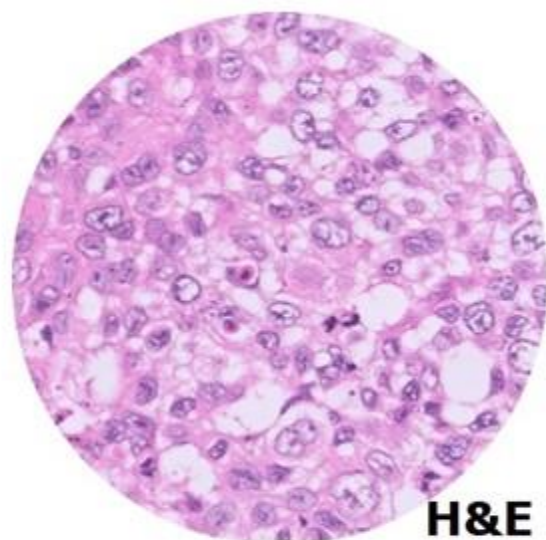


# Lung Adenocarcinoma Data with ThermoFisher (n=55)

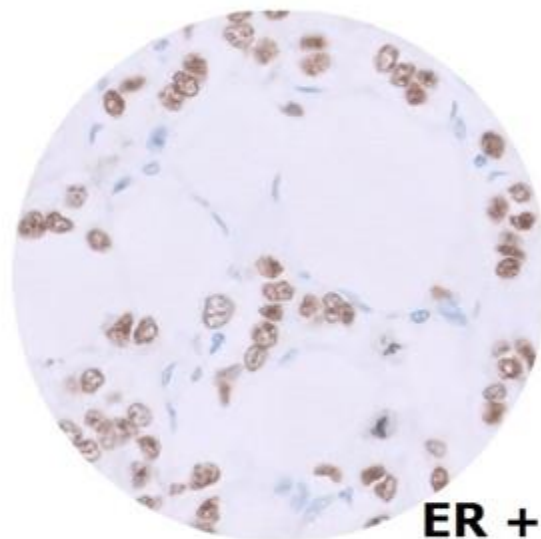




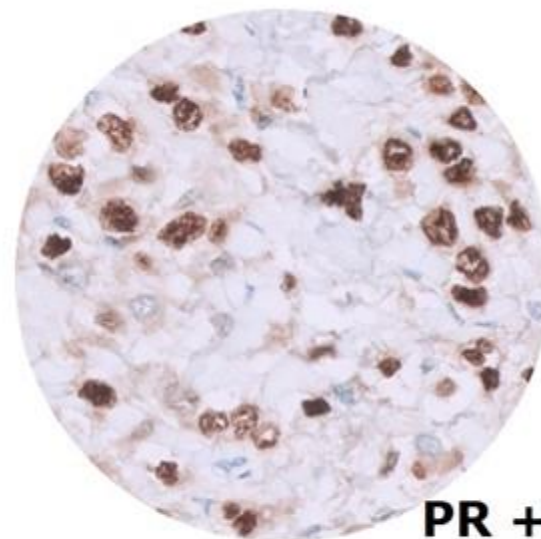
# Matched Sets of Breast Cancer WSI : H&E, ER, PR, HER2, MIB / Ki67



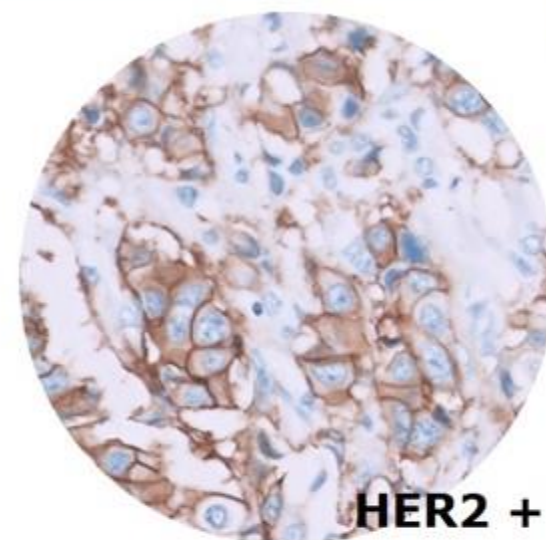
**H&E**



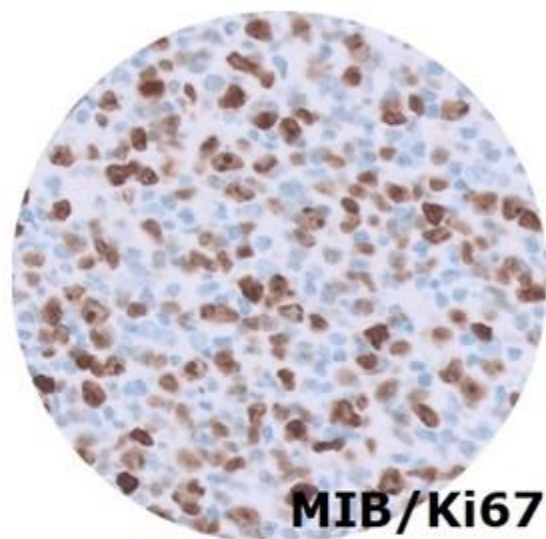
**ER +**



**PR +**

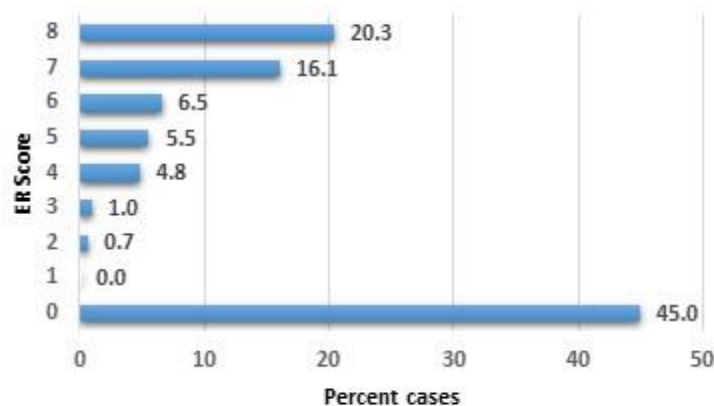


**HER2 +**



**MIB/Ki67**

**Distribution of ER Scores**



**Distribution of HER2 scores**

