

PRODUCT CATALOGUE



aerotecnic

# INDEX

 METALLIC

 COMPOSITES

 MULTI-TECHNOLOGY



## METALLIC

Comprehensive management of detail parts and aerostructures

**DESIGNATION**

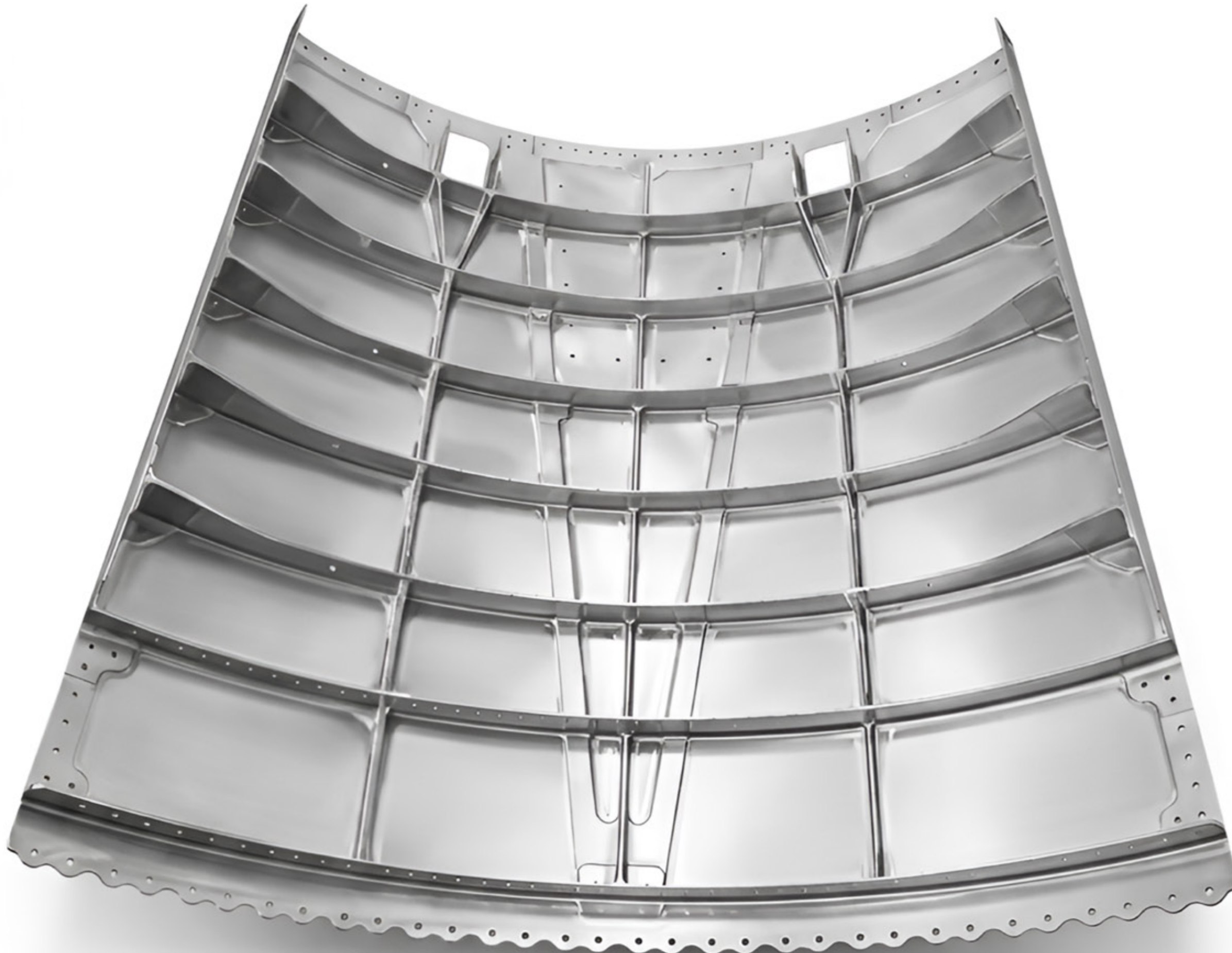
TOP PART

**MATERIAL**

Aluminium

**DIMENSION (MM)**

950 mm



**DESIGNATION**

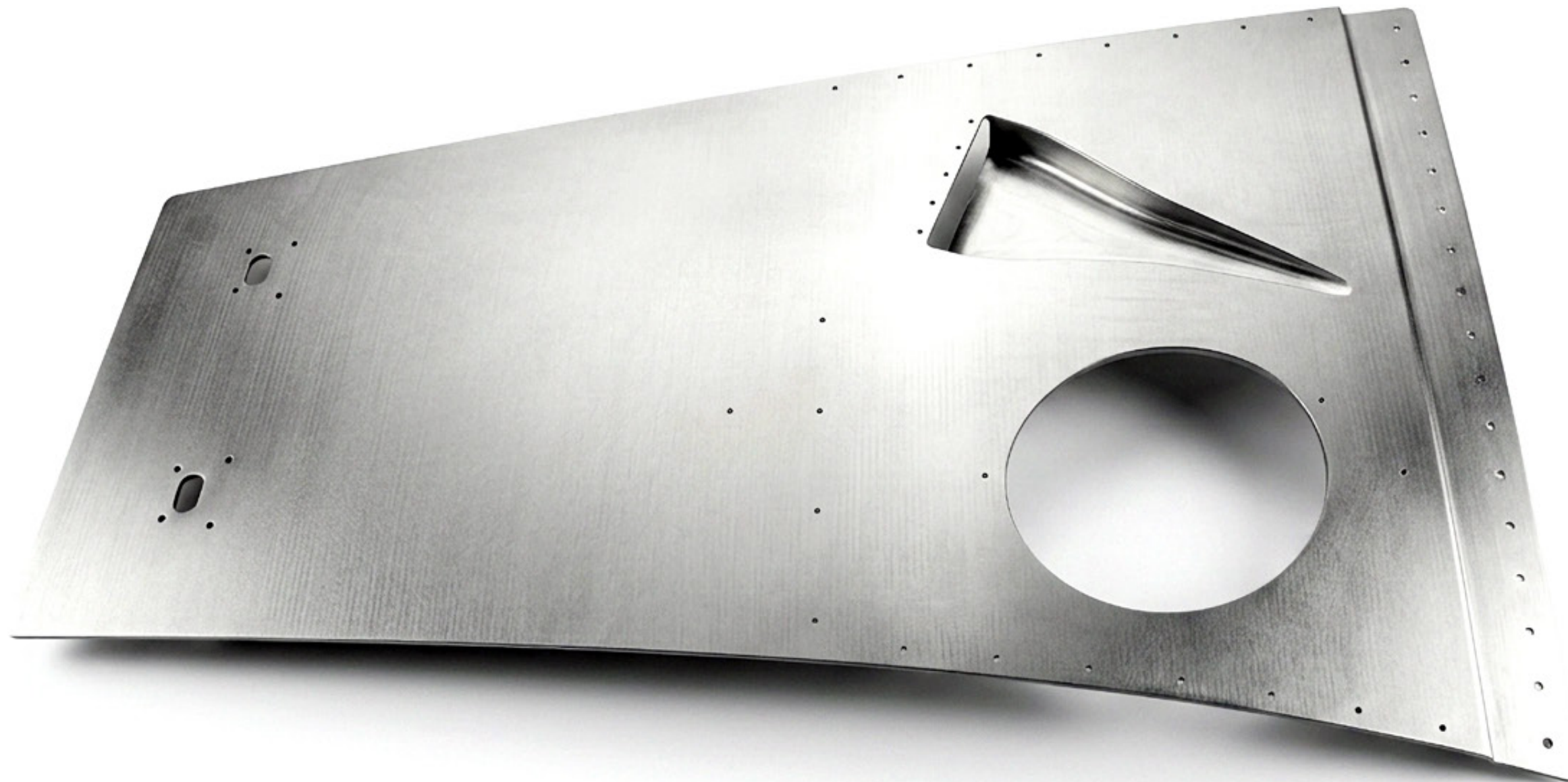
SIDE FAIRING  
FWD RH

**MATERIAL**

Aluminium

**DIMENSION (MM)**

900 mm



**DESIGNATION**

RUDDER LINKAGE,  
BELCRANK,  
AXLE, FITTING

**MATERIAL**

Aluminium

**DIMENSION (MM)**

135 mm



**DESIGNATION**

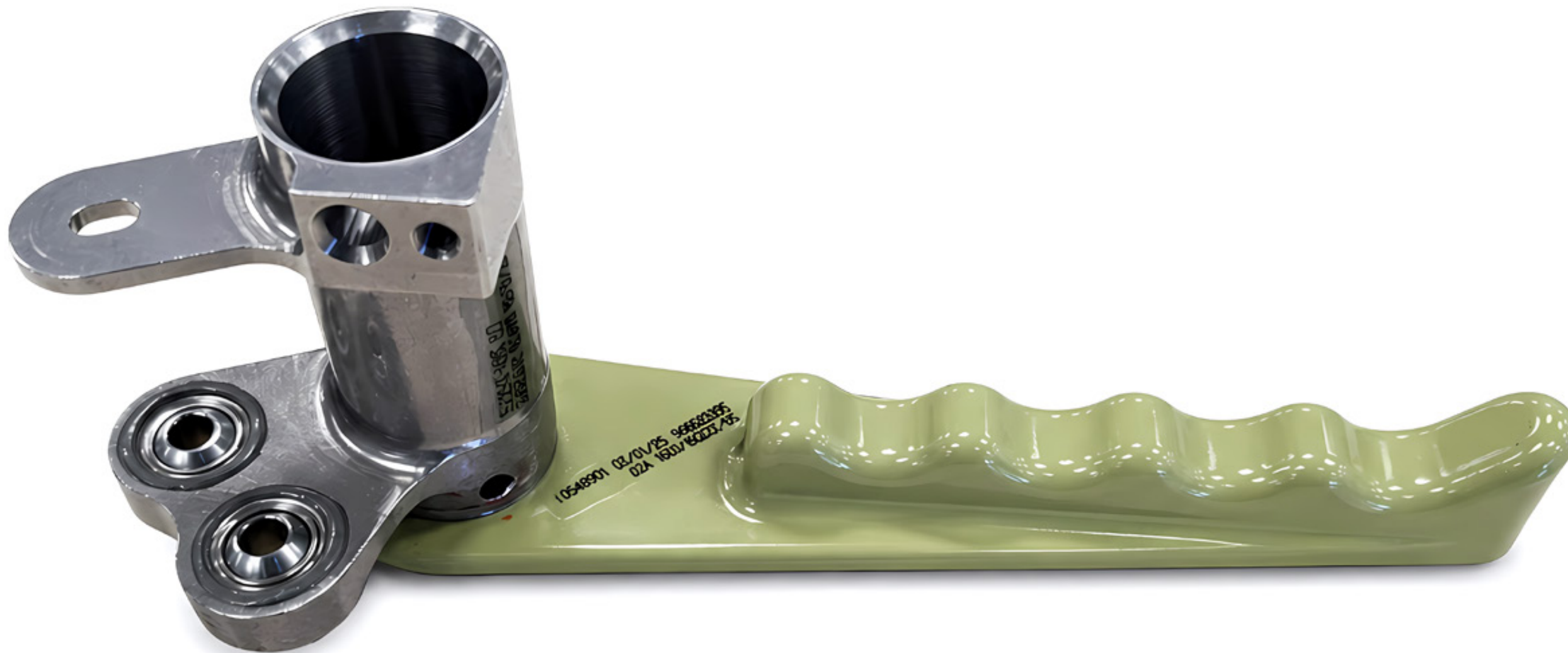
DOOR HANDLE  
ASSY

**MATERIAL**

Steel & Aluminium

**DIMENSION (MM)**

185 mm



**DESIGNATION**

HINGE

**MATERIAL**

Aluminium

**DIMENSION (MM)**

250 mm



**DESIGNATION**

UPPER TORSION  
BAR

**MATERIAL**

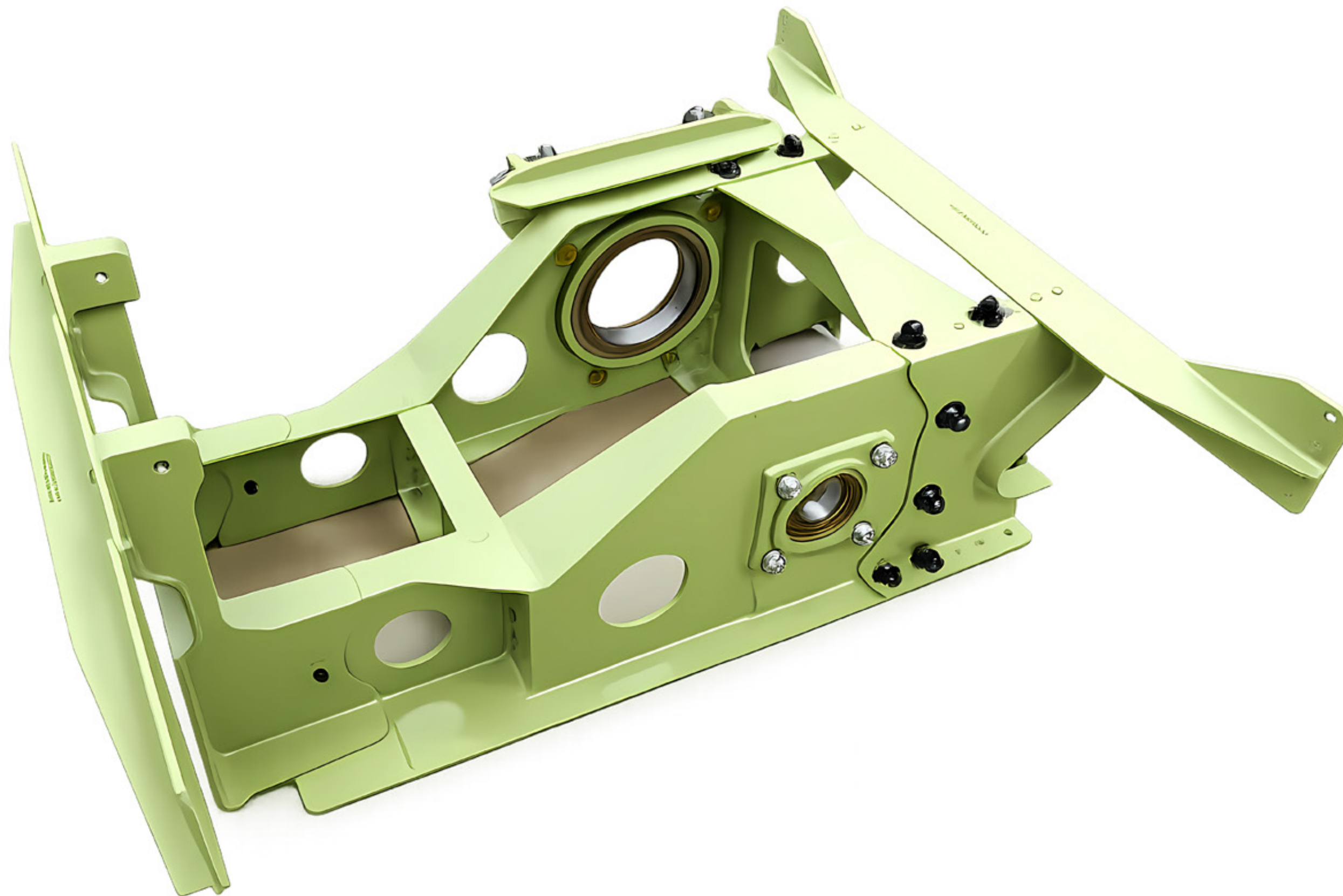
Steel & Aluminium

**DIMENSION (MM)**

375 mm







**DESIGNATION**

CONTROL  
COLUMN  
MOUNTING  
ASSEMBLY

**MATERIAL**

Aluminium

**DIMENSION (MM)**

515 mm



**DESIGNATION**

STICK SUPPORT  
REAR, ASSY

**MATERIAL**

Aluminium

**DIMENSION (MM)**

270 mm



**DESIGNATION**

SUSPENSION LUG

**MATERIAL**

Steel

**DIMENSION (MM)**

305 mm





**DESIGNATION**

INTERFACE  
ADAPTER

**MATERIAL**

Aluminium

**DIMENSION (MM)**

500 mm



**DESIGNATION**

SLEEVE

**MATERIAL**

Steel

**DIMENSION (MM)**

70 mm



**DESIGNATION**

BULKHEAD ASSY,  
MLG OUTER

**MATERIAL**

Aluminium

**DIMENSION (MM)**

1640 mm



**DESIGNATION**

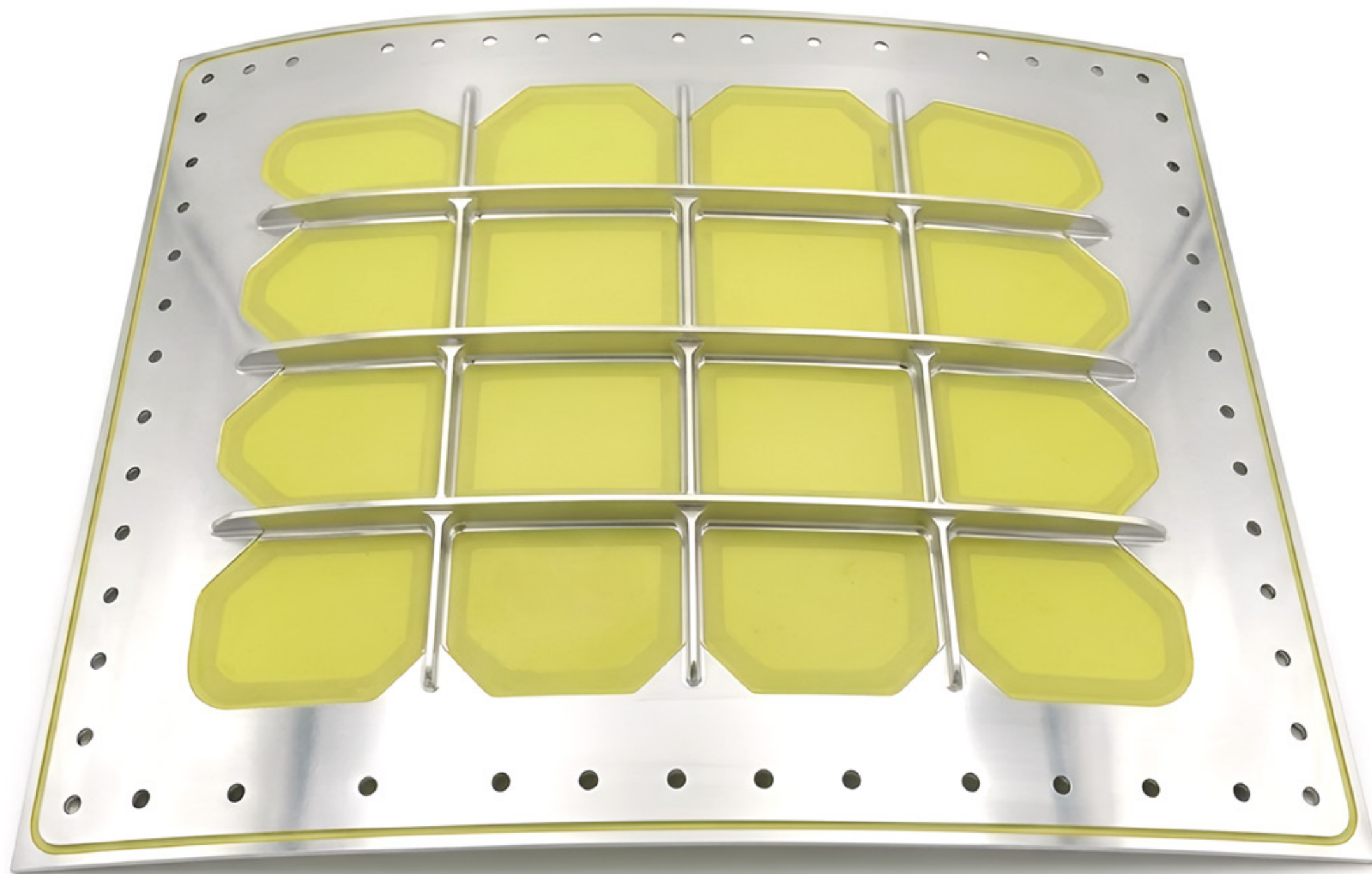
FUEL AC PANEL RH

**MATERIAL**

Aluminium

**DIMENSION (MM)**

460 mm



**DESIGNATION**

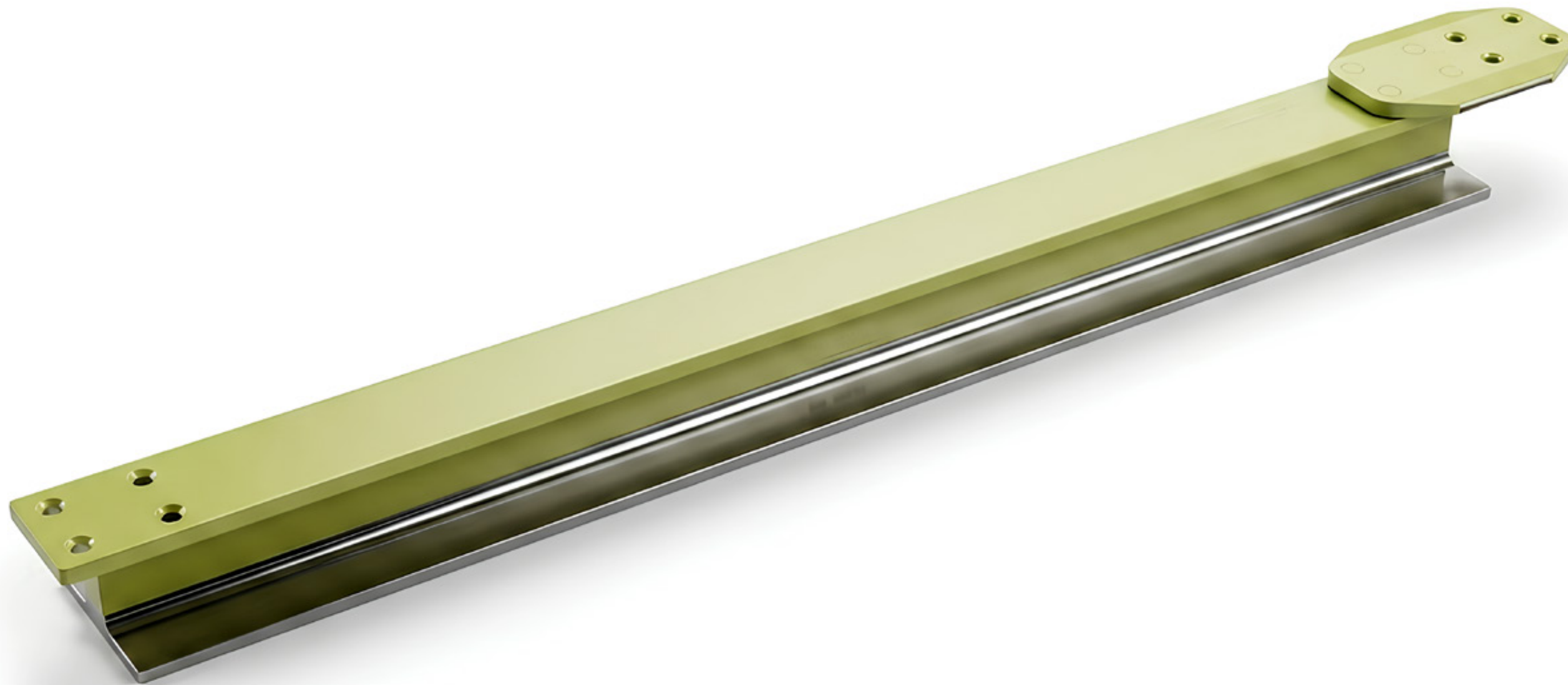
REAR CENTRAL  
RAIL ASSEMBLY

**MATERIAL**

Steel

**DIMENSION (MM)**

1300 mm



**DESIGNATION**

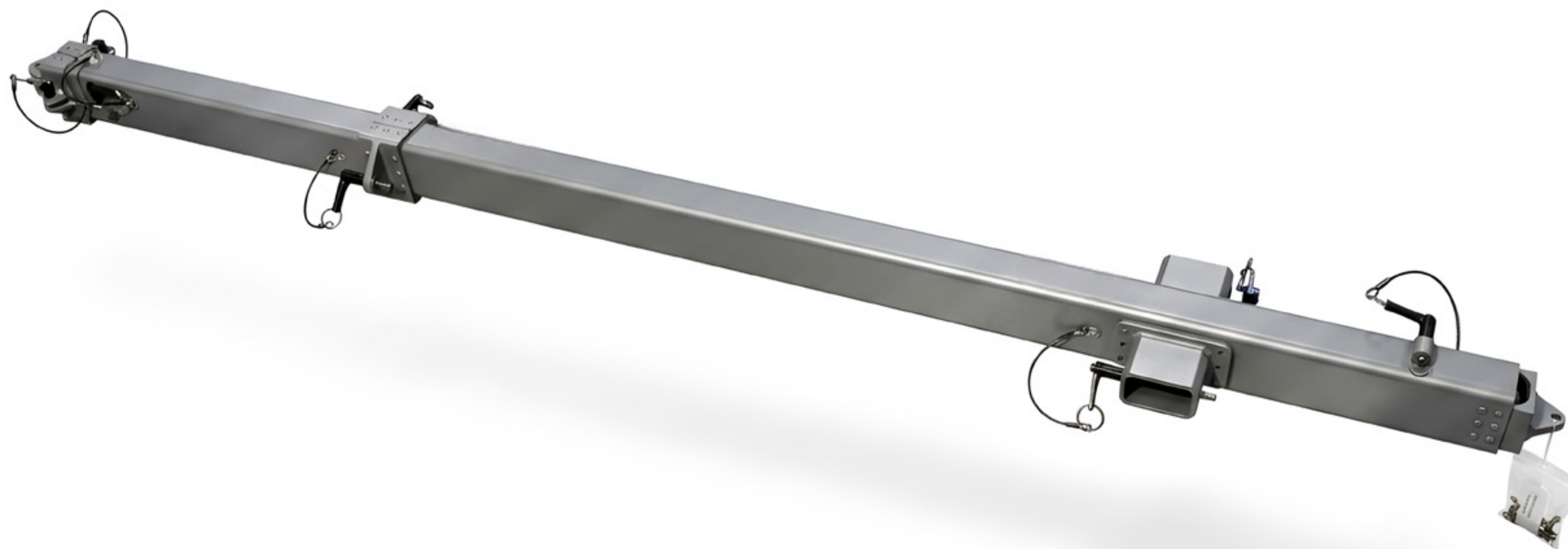
POST NUMBER 5,  
MIDDLE ROW

**MATERIAL**

Aluminium

**DIMENSION (MM)**

1900 mm



**DESIGNATION**

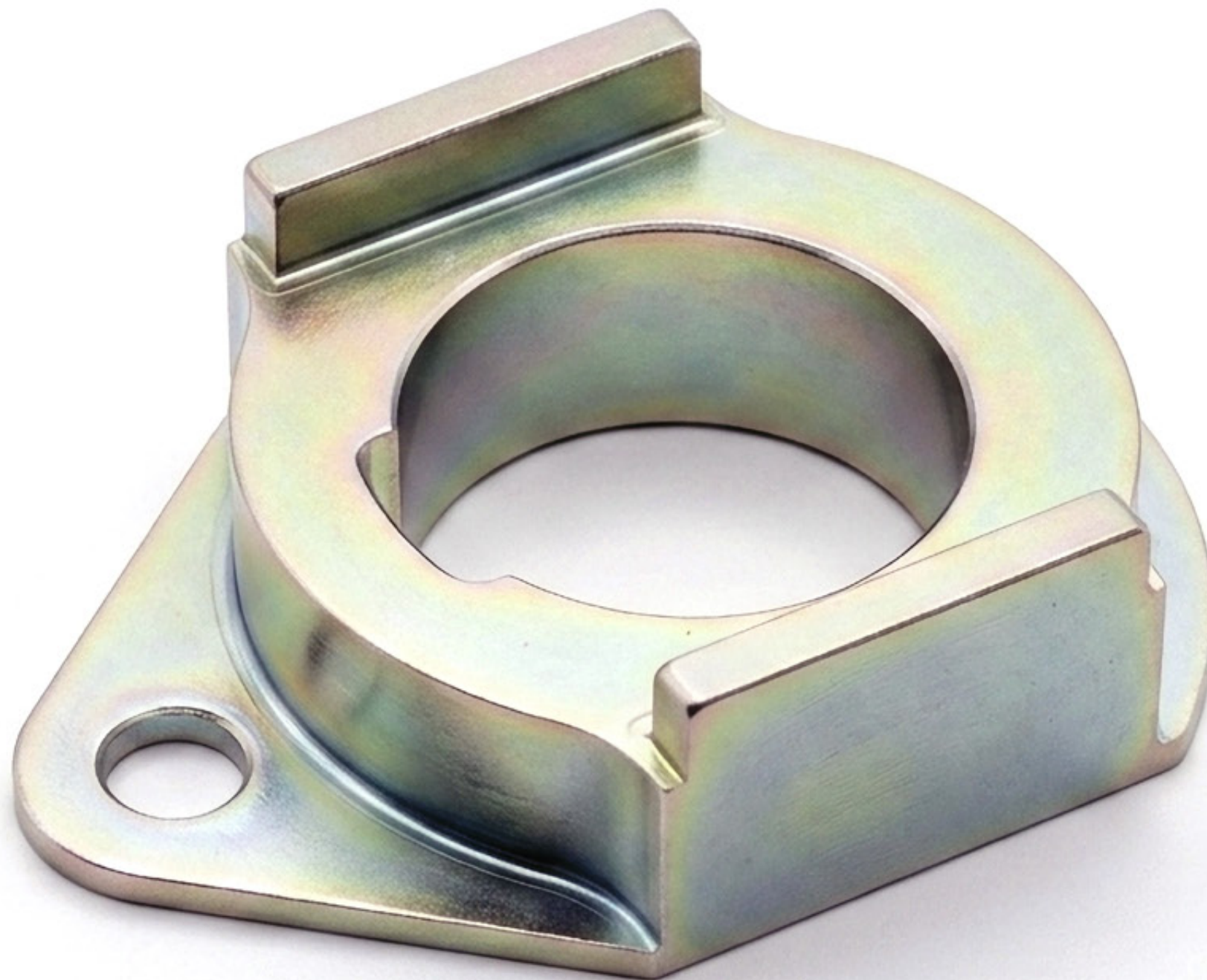
LOCKING DEVICE

**MATERIAL**

Steel

**DIMENSION (MM)**

100 mm



**DESIGNATION**

HINGE FITTING

**MATERIAL**

Titanium

**DIMENSION (MM)**

92 mm



**DESIGNATION**

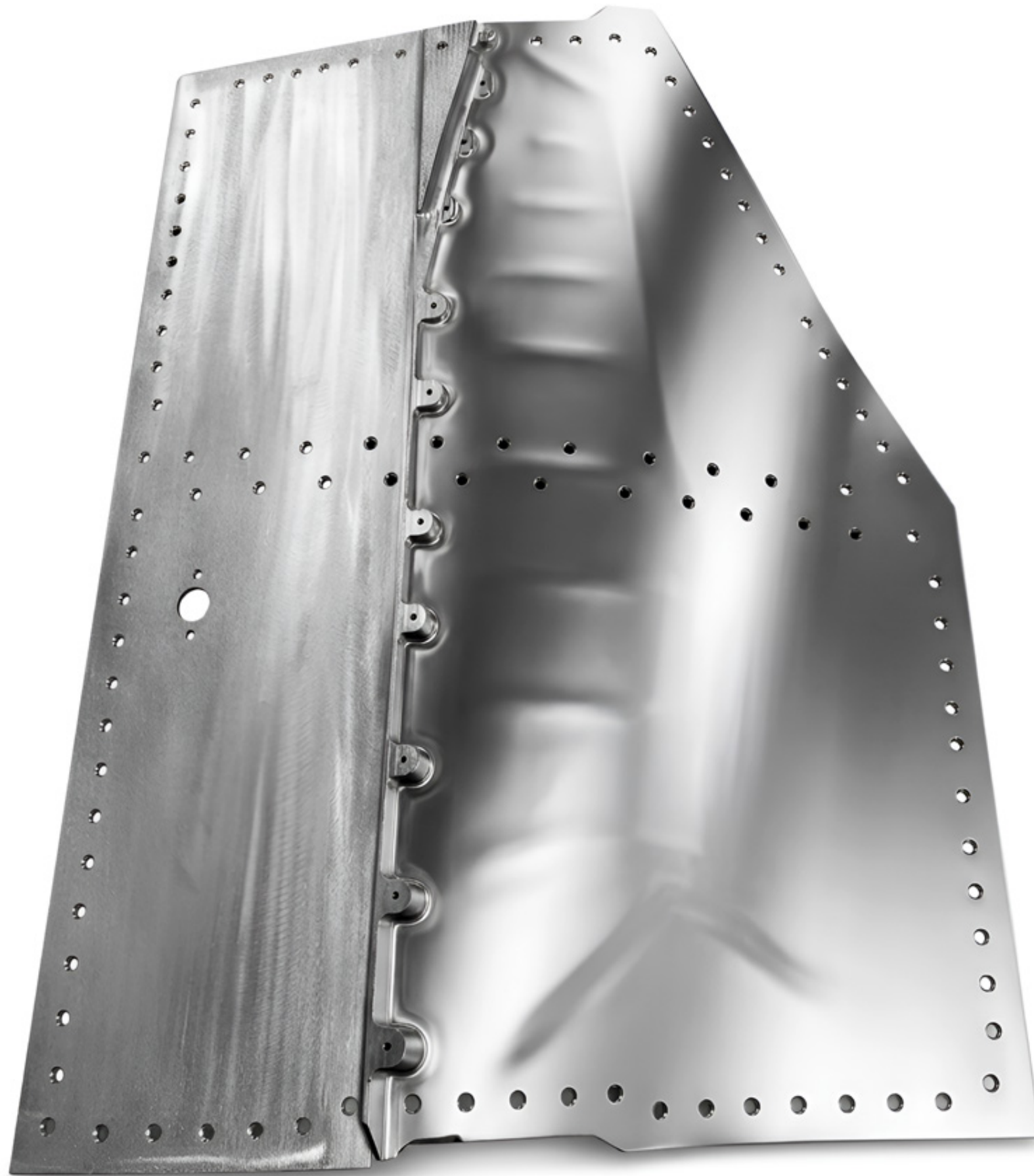
ACCESS PANEL  
L240

**MATERIAL**

Aluminium

**DIMENSION (MM)**

790 mm



**DESIGNATION**

INNER AIR DUCT  
RH

**MATERIAL**

Aluminium

**DIMENSION (MM)**

460 mm



**DESIGNATION**

STRINGER LOW

**MATERIAL**

Aluminium

**DIMENSION (MM)**

933 mm



**DESIGNATION**

ACTUATOR  
COVER LH

**MATERIAL**

Aluminium

**DIMENSION (MM)**

690 mm



**DESIGNATION**

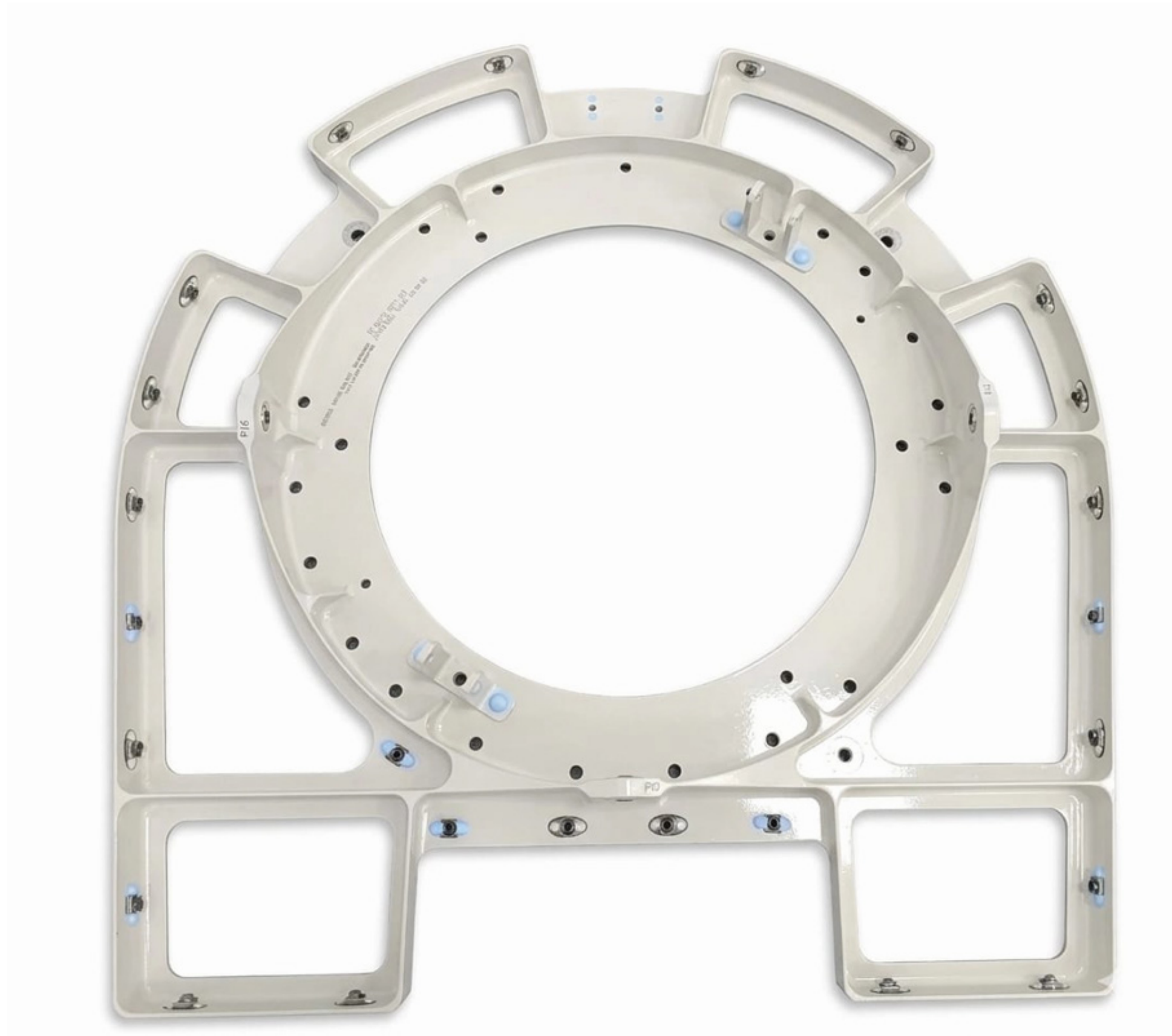
TURRET SUPPORT

**MATERIAL**

Aluminium

**DIMENSION (MM)**

520 mm



**DESIGNATION**

LATERAL FRAME

**MATERIAL**

Aluminium

**DIMENSION (MM)**

2200 mm



**DESIGNATION**

LATERAL FRAME

**MATERIAL**

Aluminium

**DIMENSION (MM)**

3250 mm



**DESIGNATION**

LATERAL BEAM

**MATERIAL**

Aluminium

**DIMENSION (MM)**

5400 mm





## COMPOSITES

Comprehensive management  
of composite parts

**DESIGNATION**

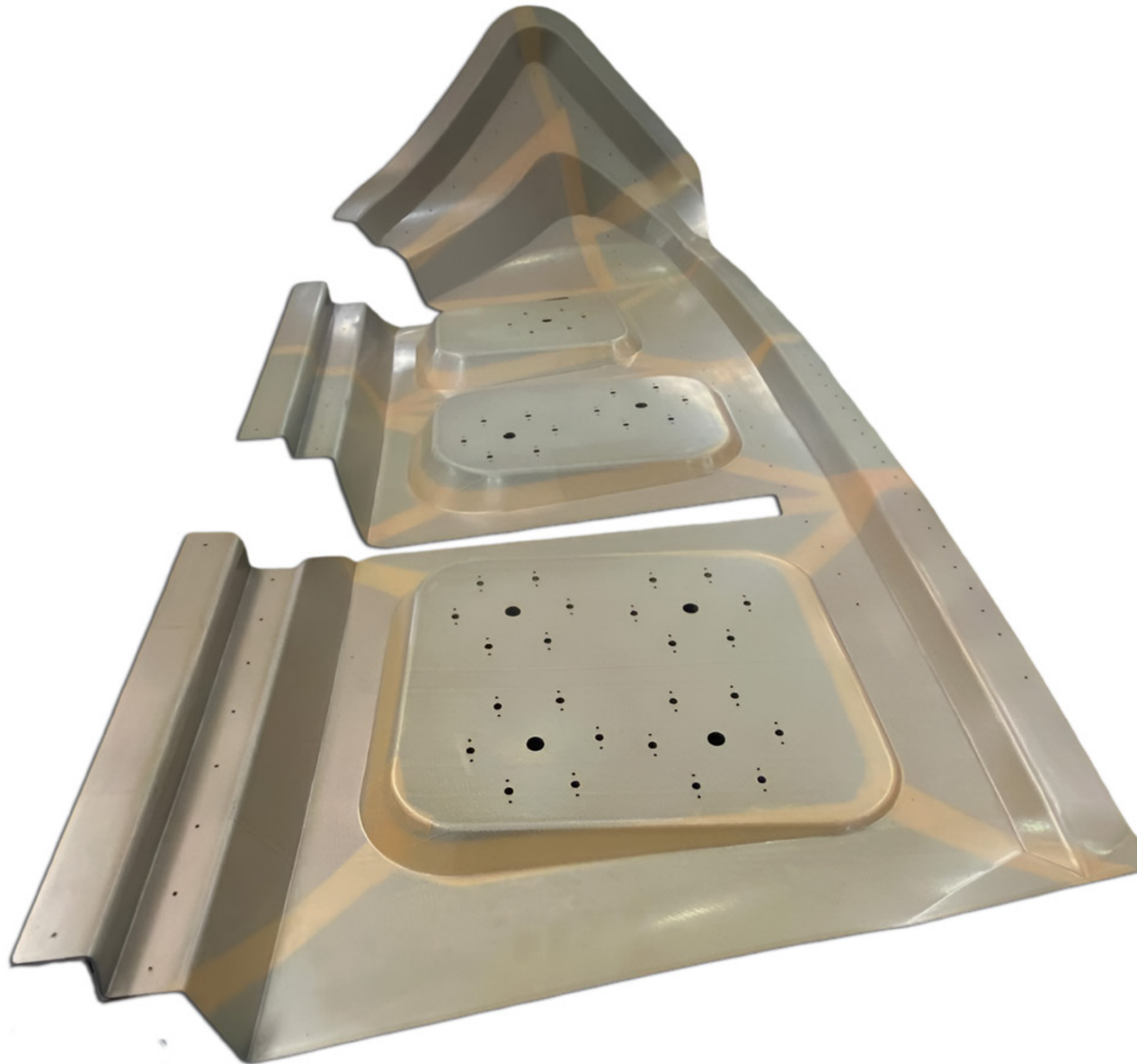
PANEL  
CLOSING-AFT  
SPONSON

**MATERIAL**

Carbon Fiber

**DIMENSION (MM)**

1200 mm x 400 mm



**DESIGNATION**

PANEL  
RH-FWD I  
SPONSON

**MATERIAL**

Carbon Fiber

**DIMENSION (MM)**

1200 mm x 400 mm



**DESIGNATION**

LOWER 17NJ LH

**MATERIAL**

Carbon Fiber

**DIMENSION (MM)**

1200 mm x 600 mm



**DESIGNATION**

PANEL-W44-01

**MATERIAL**

Carbon Fiber

**DIMENSION (MM)**

950 mm x 400 mm



**DESIGNATION**

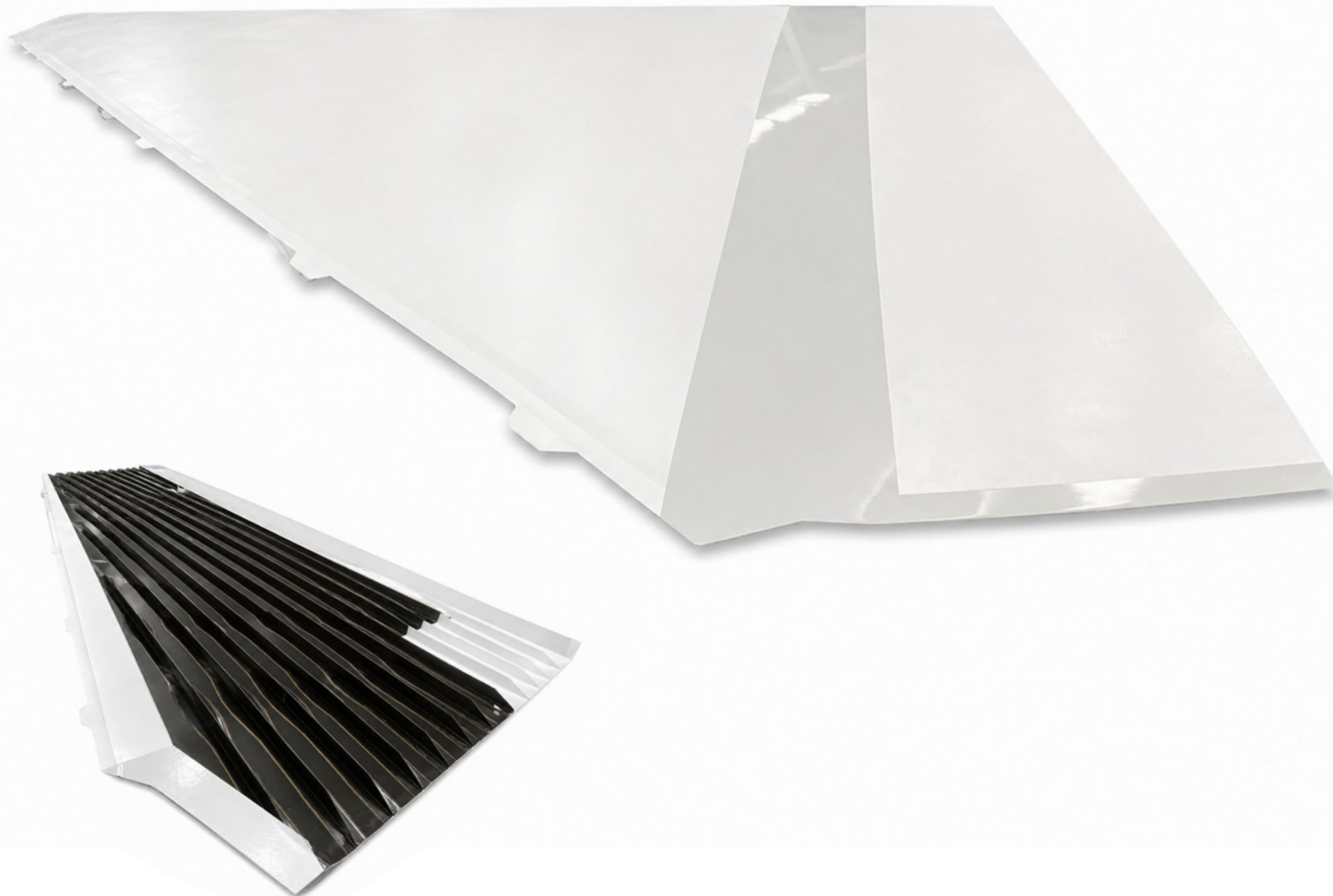
UPPER SKIN  
HTP RH

**MATERIAL**

Carbon Fiber

**DIMENSION (MM)**

10.000 mm x 1900 mm



**DESIGNATION**

FAIRING

**MATERIAL**

Carbon Fiber

**DIMENSION (MM)**

1400 mm x 300 mm



**DESIGNATION**

REAR SPAR LH

**MATERIAL**

Carbon Fiber

**DIMENSION (MM)**

10.000 mm x 450 mm





**DESIGNATION**

REAR ALSE 4

**MATERIAL**

Glass Fiber & Aramide

**DIMENSION (MM)**

1200 mm x 400 mm



**DESIGNATION**

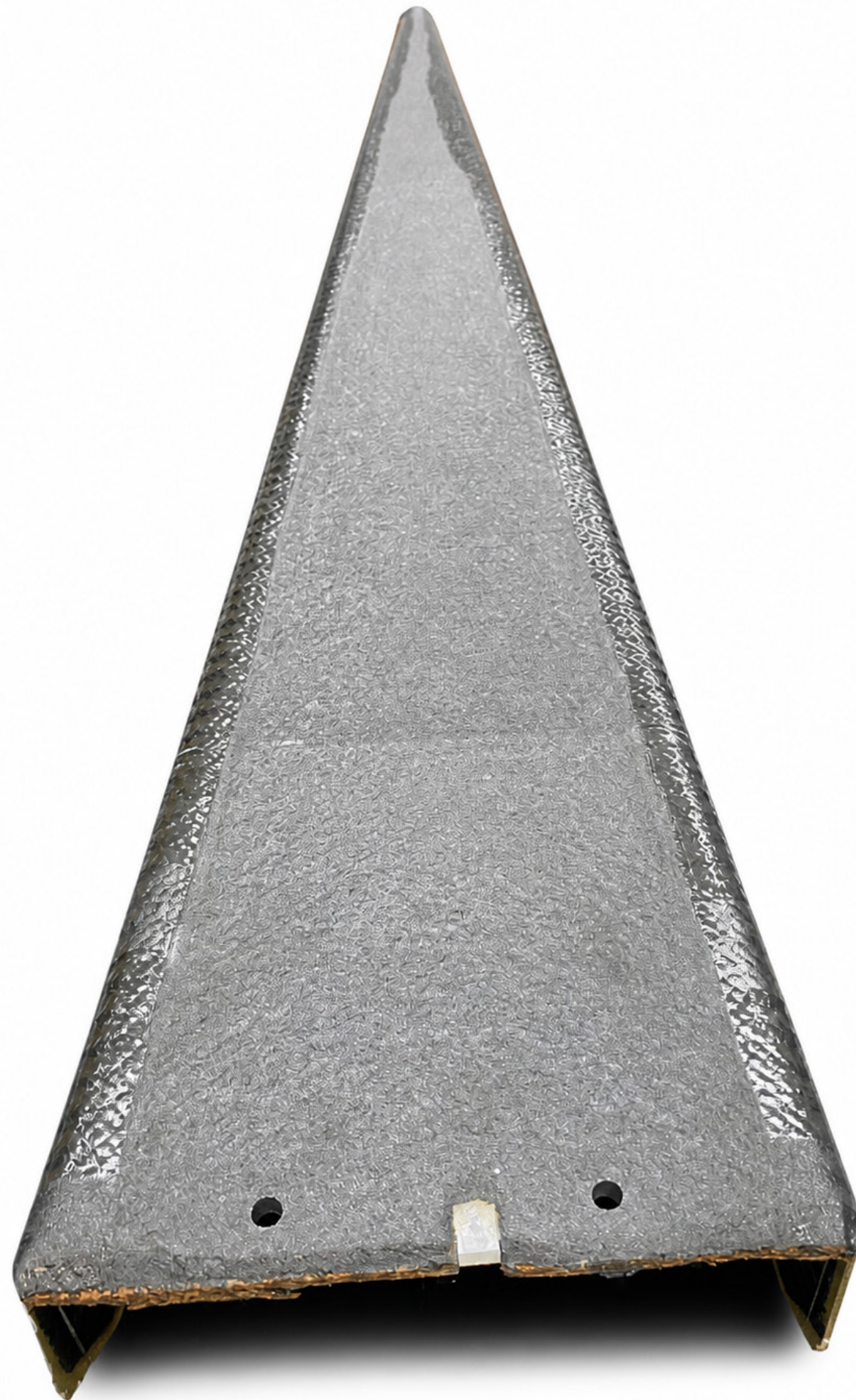
RIB 8

**MATERIAL**

Carbon Fiber

**DIMENSION (MM)**

1100 mm x 200 mm



**DESIGNATION**

RIB 4 LE

**MATERIAL**

Carbon Fiber

**DIMENSION (MM)**

20x20 cm



**DESIGNATION**

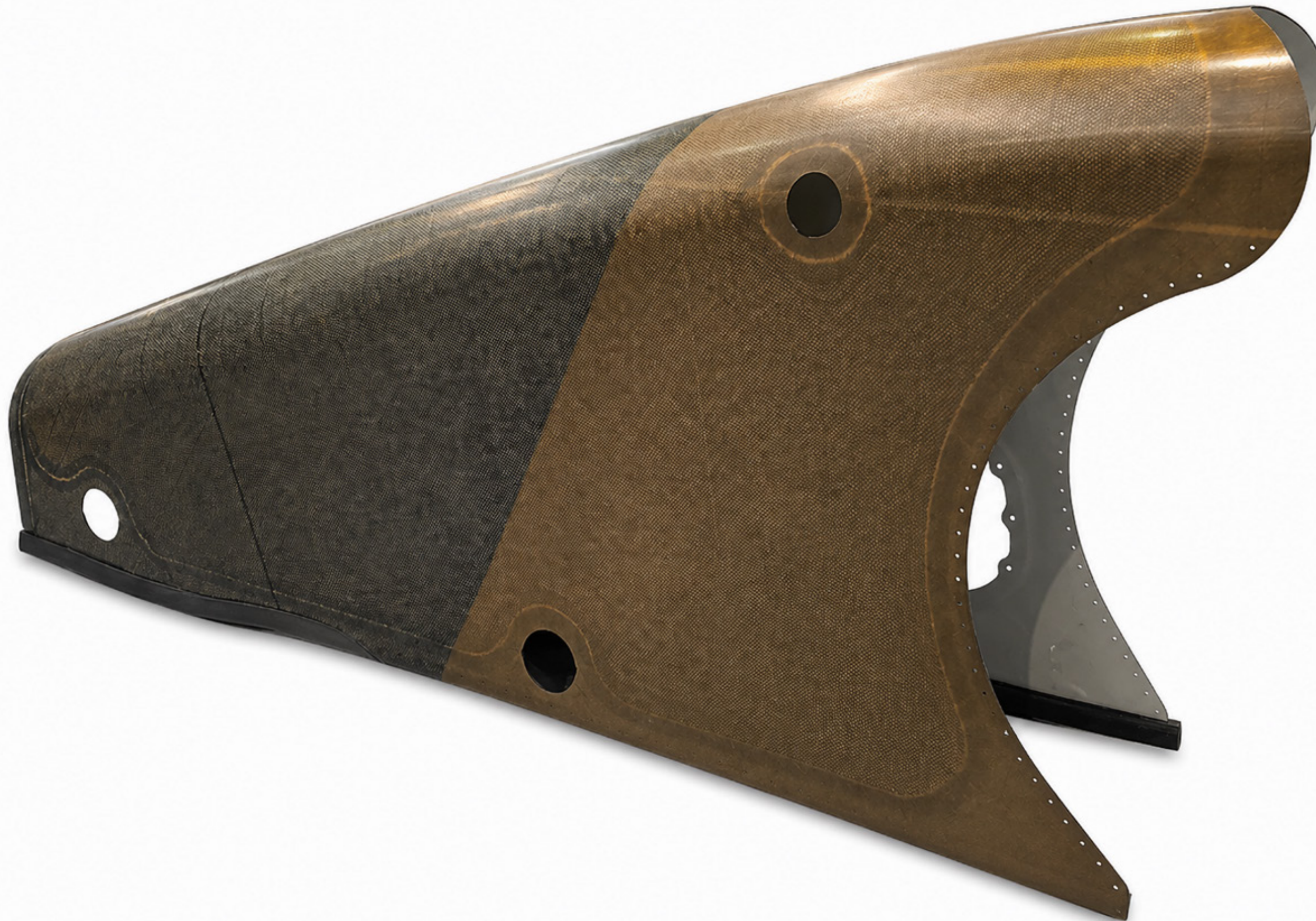
FIXED FAIRING 1  
RIGHT

**MATERIAL**

Carbon Fiber

**DIMENSION (MM)**

1000 mm x 2100 mm



**DESIGNATION**

LOWER SKIN  
HTP LH

**MATERIAL**

Carbon Fiber

**DIMENSION (MM)**

4800 mm x 750 mm



**DESIGNATION**

PANEL  
RH-FWD I  
SPONSON

**MATERIAL**

Carbon Fiber

**DIMENSION (MM)**

1000 mm x 1500 mm



**DESIGNATION**

SEAL PLATE

**MATERIAL**

Glass Fiber

**DIMENSION (MM)**

760 mm x 120 mm



**DESIGNATION**

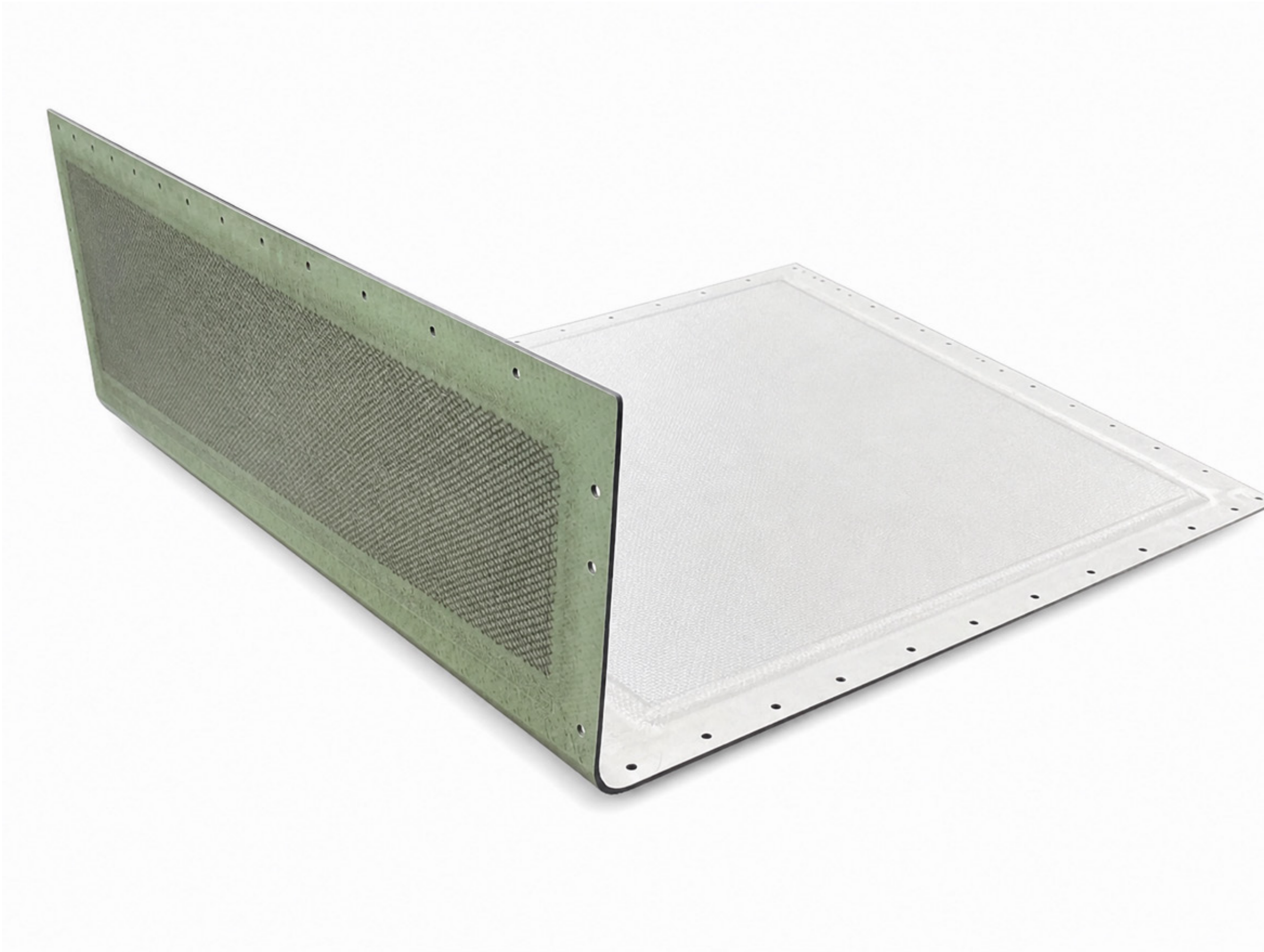
PANEL-198FT

**MATERIAL**

Carbon Fiber

**DIMENSION (MM)**

1300 mm x 1350 mm



**DESIGNATION**

FRONT SPAR RH

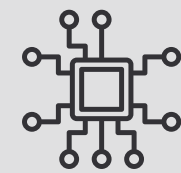
**MATERIAL**

Carbon Fiber

**DIMENSION (MM)**

10.000 mm x 450 mm





# MULTI-TECHNOLOGY

**DESIGNATION**

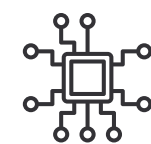
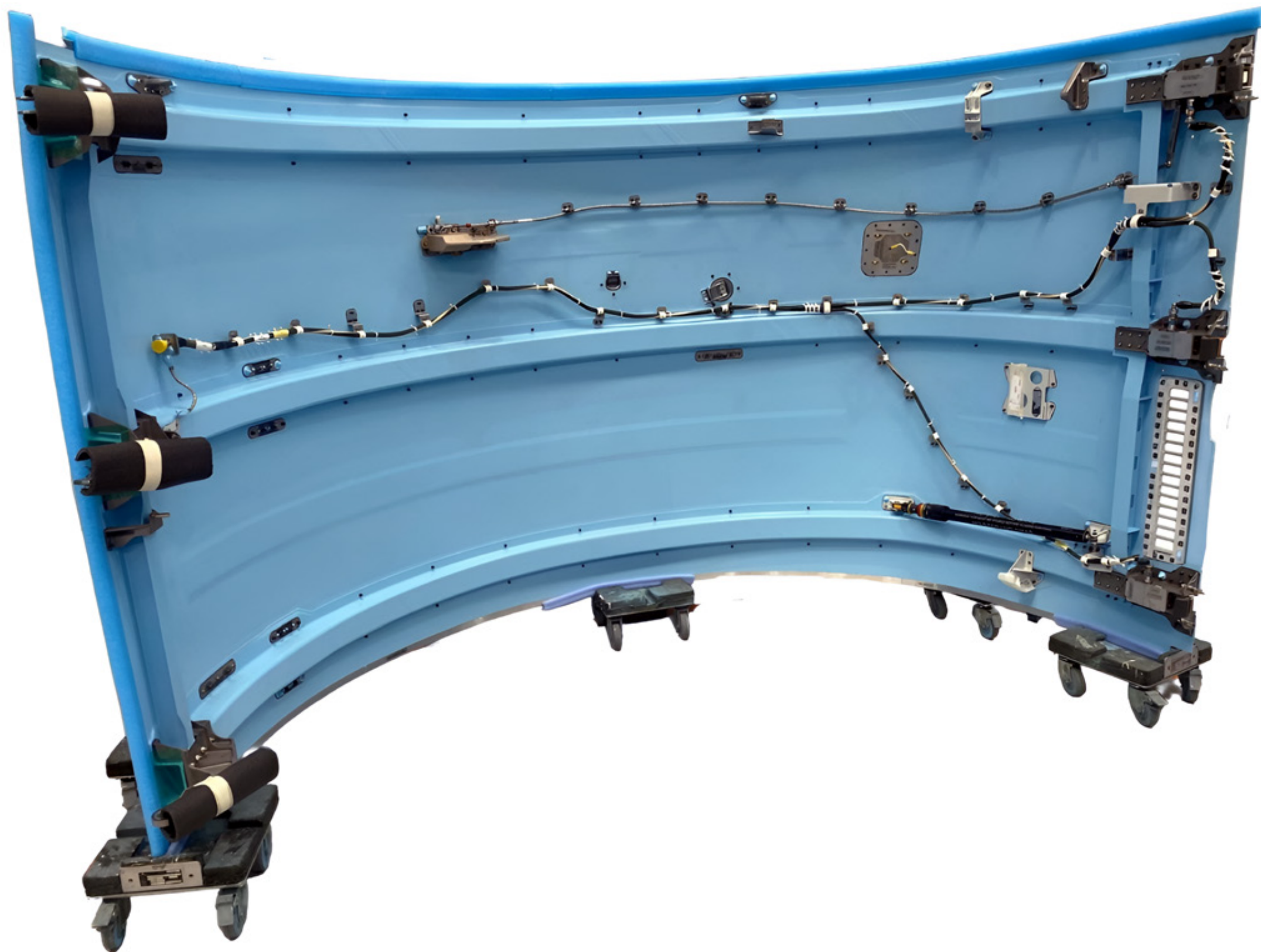
FAN COWL  
DOOR LH

**MATERIAL**

Multi Material

**DIMENSION (MM)**

1700 x 3400 mm



**DESIGNATION**

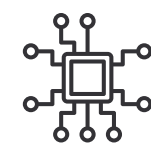
FAN COWL  
DOOR RH

**MATERIAL**

Multi - Material

**DIMENSION (MM)**

1700 mm x 3400 mm



**DESIGNATION**

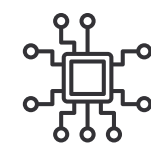
CENTRAL  
CROSSBAR

**MATERIAL**

Multi - Material

**DIMENSION (MM)**

2600 mm x 200 mm



**DESIGNATION**

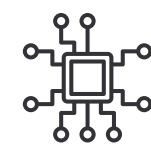
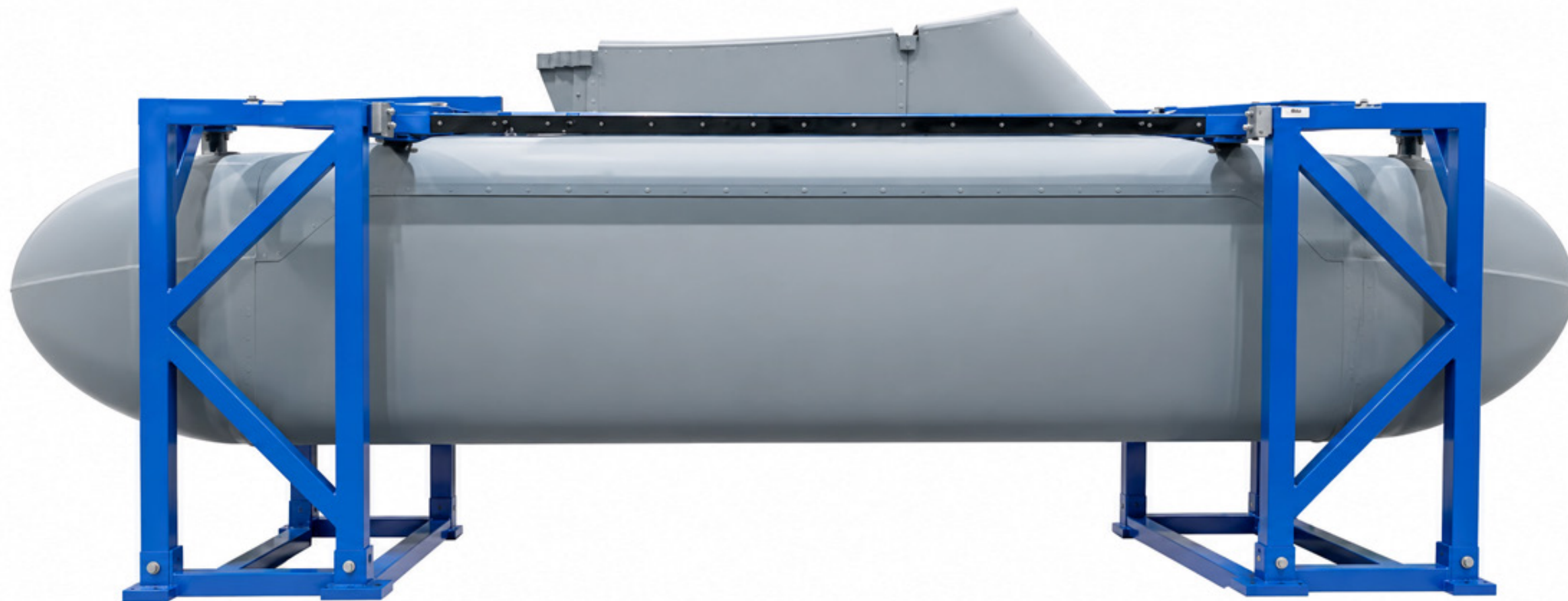
POD

**MATERIAL**

Multi - Material

**DIMENSION (MM)**

3200 mm x 900 mm



**DESIGNATION**

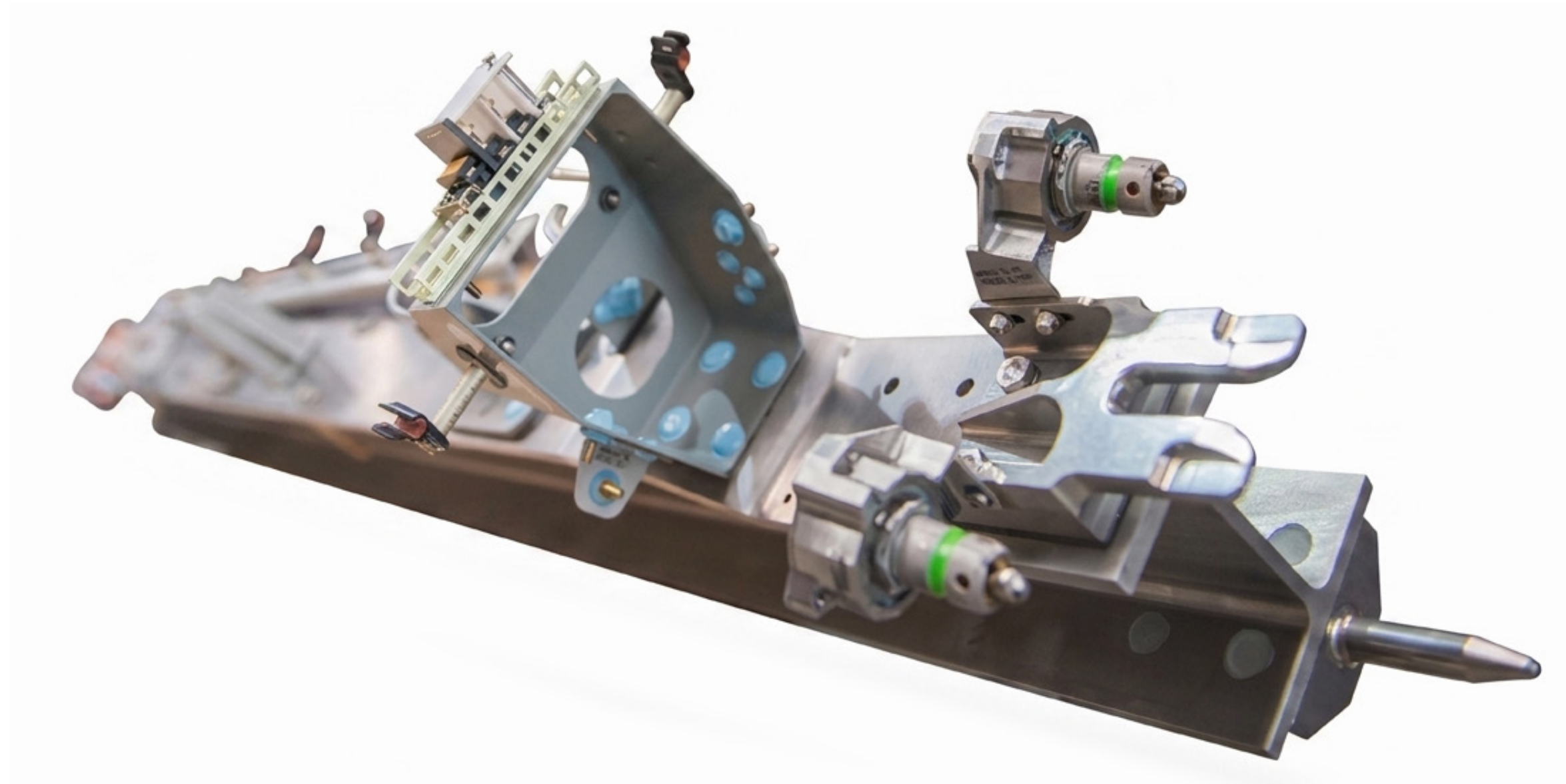
EQUIPPED FRAME

**MATERIAL**

Multi - Material

**DIMENSION (MM)**

2400 mm



**DESIGNATION**

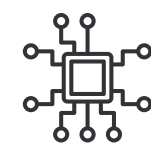
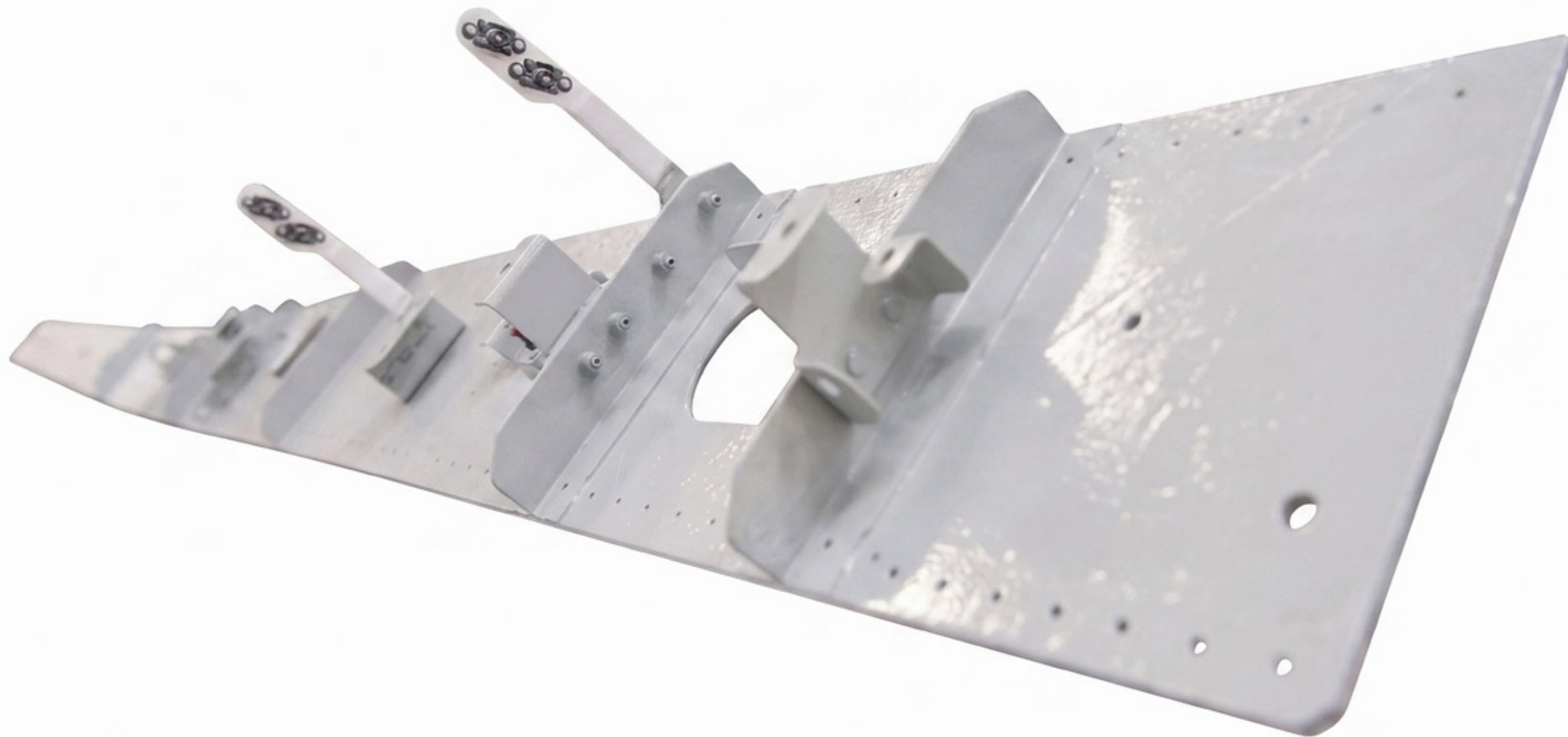
FRONT SPARE  
SPLICE

**MATERIAL**

Multi - Material

**DIMENSION (MM)**

2400 mm





aerotecnic