



INDTECH2018

Innovative industries for smart growth

29-31 October, 2018
Vienna, Austria

www.indtech2018.eu
[@IndTech2018](https://twitter.com/IndTech2018)
[#IndTech2018](https://twitter.com/IndTech2018)

PILLAR 3

Session 3.1

European pilot line production facilities across Europe

Paula Galvão

INL Portugal

30 October 2018

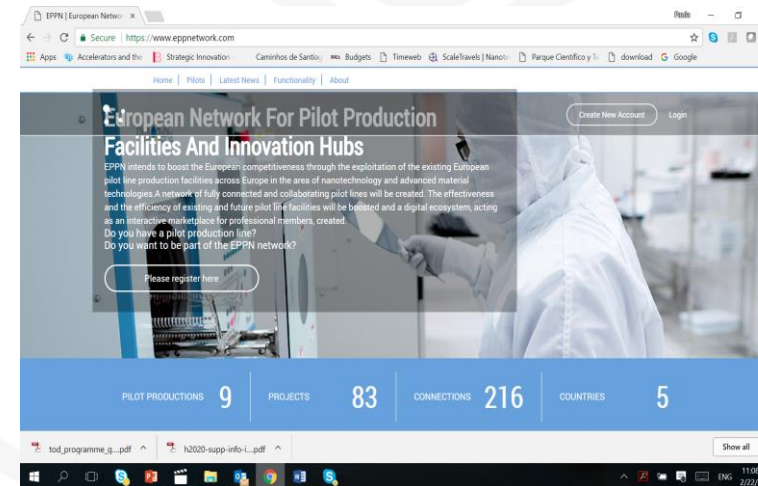


EPPN - European Network for Pilot Production Projects & Innovation Hubs

From **Lab** to **Industry** to **Market**



Digital platform and marketplace to bridge testbeds with industrial users



CAMBRIDGE
NANOMATERIALS
TECHNOLOGY LTD

onvega
every bit matters



- **Difficult for companies to find pilot facilities and establish trust.**
- Create a global overview of the existing **expertise** and **infrastructure** and bridge complementarities, **capabilities**, **resources** and **demand**.
- **Fill the gap between technology, testbeds and manufacturing** and contribute to an enhanced **innovation ecosystem** and **attractive business environments**.
- **Exploit the business potential** of the existing Pilot Facilities.
- Foster the creation of high-quality **innovation networks** around the Pilot Production Lines. **An innovation network and its quality are crucial to gear pilot production facilities.**

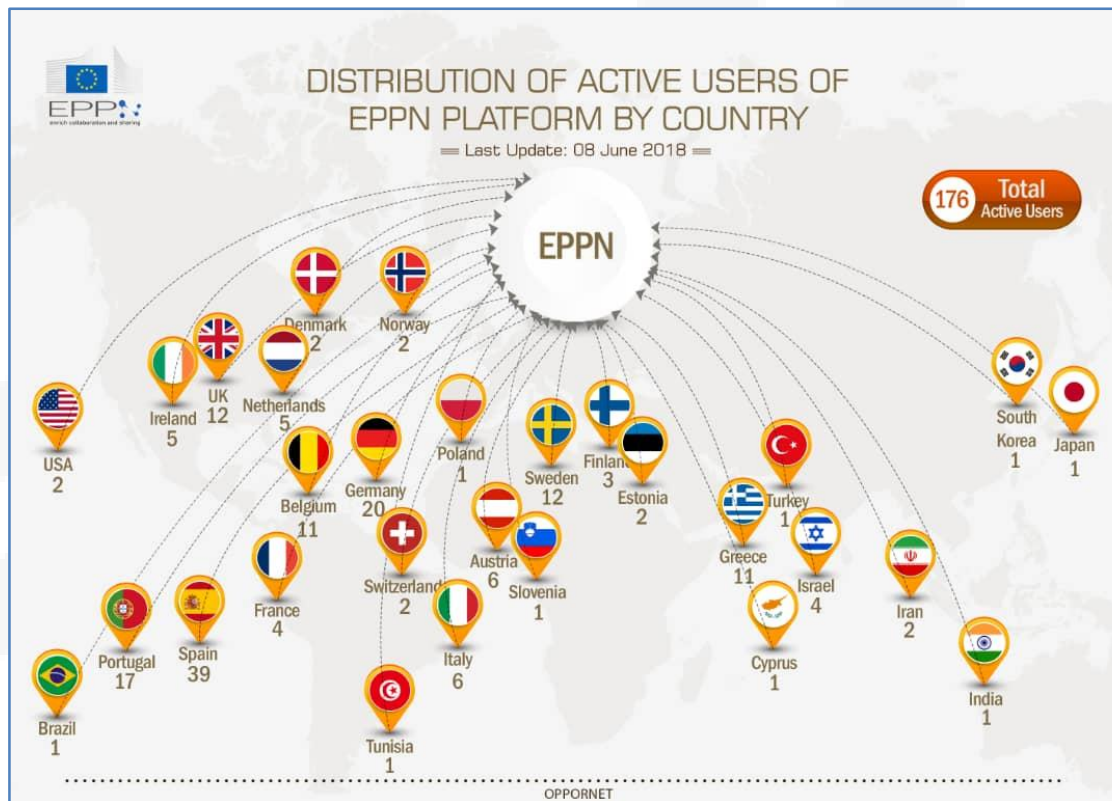
More than 150 million euros investment in Piloting and upscaling facilities



- Synergies
- Efficiency
- Sustainability
- Reliable decisions



EPPN Marketplace - A **single entry point** connecting **pilot line facilities** allowing technology providers to engage with users, **technology up-takers, start ups, SMEs, LE, policy makers, investors** and other actors in the ecosystem, along **industrial value chains**.



- Facilitate **cross-border access**, to specialised facilities and expertise.
- Provide access to high-quality, reliable, and **updated information**.
- Provide **access to active pilot network** and the possibility of comparing them based on various parameters.
- Provide companies (startups, SMEs and large companies) with **assurance about the quality of the services** being provided and access conditions
- Possibility to show other networks and direct link to DIH & DG-Grow pages.
- By liaising with other DBs is allows testing upscaling, characterization and modelling.

EPPN Platform - European Added Value



Single entry point for any user to access pilot facilities and services across Europe.

- ✓ Innovation Hub with pilot lines
- ✓ Innovation Hub without pilot lines
- ✓ Pilot owners
- ✓ End-users (SME–LE)
- ✓ Investors
- ✓ Regional/national authorities
- ✓ Technology translators
- ✓ Tech. Transfer offices
- ✓ EEN members
- ✓ NCPs
- ✓ Service providers
- ✓ Safety, modelling, characterization clusters/networks

- **Assist users in developing new NMBP based /products using NMBP pilot lines .**
- **Bring together actors along value chains.**
- **Ensure that companies get access to the latest expertise and technologies**
- **Accelerate the development of products for a faster market entry.**
- **Increased return on investment in research.**
- Easier marketability of products.
- **Early stage access to intelligence on more efficient development process.**
- **Support the implementation of harmonized conditions**

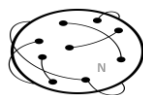


Thank you!

Paula Galvao

Chief Officer at the Business &
Strategic relations department
International Iberian Nanotechnology Laboratory

EPPN functionalities:



Mapping
Location-Relations



Profiles



Offer Matching



Transaction



Filtering



Finding



Visualisation



KEEP IN TOUCH: <http://eppn.eu>

Email: contact@eppn.eu

