

# Yarlington Manor Farm Development Proposal

Meeting at Galhampton  
Village Hall  
4<sup>th</sup> June 2023

# Manor Farm Proposal

At a presentation at the Stag's Head on 25<sup>th</sup> February Emily Estate proposed the following:

- Construction of a new farm on land lying between Yarlinton & Galhampton
- Redevelopment of Manor Farm in Yarlinton into housing
- Continued construction of concrete roads linking Yarlinton / Avalon Farm / Castle Cary

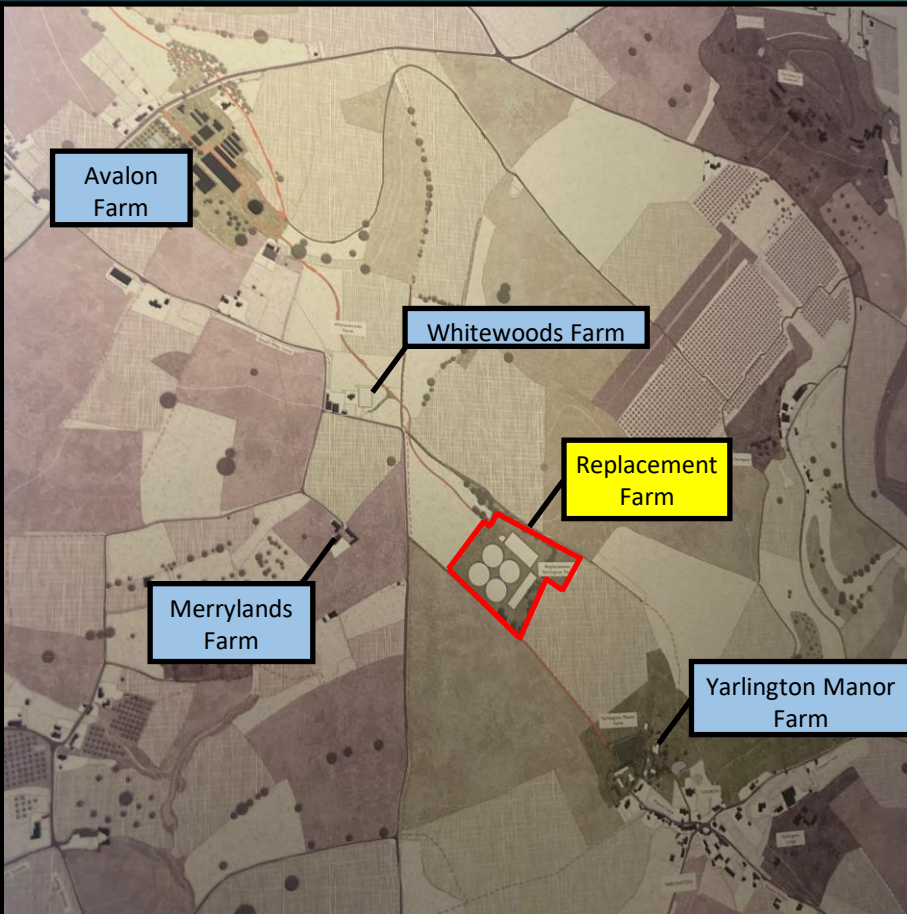
# Manor Farm Proposal



- A new Farm on green fields
- Close to the current pathways
- Backing on to the copse below Yarlington Sleights



# Manor Farm Proposal



Current Farm  
To be redeveloped for Housing:

- Initially Long Term lets
- Now suggesting "Affordable Housing"

The position takes up a large site midway between Yarlington and Galhampton

# Reasons to Object

There is no persuasive reason for building a new farm

## ➤ Efficiency

- This farm will be only 600 m from the current farm
- The current farm could be updated / improved
- The Farm track to Avalon would be built anyway

## ➤ Environmental

- A new farm would require thousands of tons of new concrete
- Redevelopment of the current farm would require disposal of similar amounts of concrete
- Loss of habitat and biodiversity

## ➤ Housing Benefit

- There is no clear plan on what benefit the new housing would have for the community of Yarlinton or the Parish as a whole
- Impact on the traffic through Pound Lane & the village

# Are we opposed to The Newt?

We do not object to The Newt in Somerset in principle. These proposals are put forward by the Emily Estate.

But:

- Developments at Avalon Farm, Yarlinton Lodge and Manor Farm show:
  - Lack of clarity and transparency in planning
  - A disregard for, and wilful destruction of habitat
  - Lack of awareness of local sentiment and rural life
  
- No planning has been applied for at present
  - We need to make it clear if there is general local opposition
  - Consult with Emily Estate to change the plans, if deemed appropriate
  - Perhaps even get them to change (or adopt) a different policy
    - ✓ That is more sympathetic to the environment
    - ✓ Accommodates local communities

# Are we opposed to The Newt?



The Newt's latest advertising claims to include:

**“...diverse habitats for native wildlife.**

**We encourage a patchwork of land and livestock  
to improve biodiversity from the ground up.  
We care for the land that feeds us”**

- ☐ How is Laying tons of concrete “caring for the land”?
- ☐ How is ripping out hedgerows, clearing underbrush and removing mature trees “improving biodiversity from the ground up”?
- ☐ How is pouring concrete and building a new farm next to a copse encouraging “diverse habitats for native wildlife”?