



## Date

### Geometrical Data

Width	1.5 mm / 0.059 inch
-------	---------------------

### Material Data

Color	gray
Fire load	0,01 MJ
Weight	0,3 g

Supus modificărilor.

WAGO Kontakttechnik GmbH & Co. KG  
/Representative Office Romania  
Sos. Pipera-Tunari nr. 1/1  
building 1, 2nd floor | 077190 Voluntari, Ilfov  
Tel.: +40-(0)31 421 85 68 | Email: info-RO@wago.com


Aveți întrebări despre produsele noastre?  
Vă stăm la dispoziție pentru preluarea apelului la +40 (0) 31 421 85 68.

## Commercial data

Product Group	22 (TOPJOB S)
Packaging type	BOX
Country of origin	DE
GTIN	4045454997427
Customs tariff number	85389099990

## Aprobări / certificate

### Ship Approvals

Embleă	Aprobare	Text de aprobare suplimentar	Nume certificat
	<b>BV</b> Bureau Veritas S.A.	EN 60947	38586 /A0 BV

## Counterpart

## Produse compatibile

### Protective Warning Marker



Nr. articol: 2002-115

Protective warning marker; with high-voltage symbol, black; for 5 terminal blocks; yellow

[www.wago.com/2002-115](http://www.wago.com/2002-115)

## Descărcări

### Documentation

#### Additional Information

Technical explanations	Apr 3, 2019	pdf 2,1 MB	Descărcare
------------------------	-------------	---------------	------------

## CAD/CAE-Data

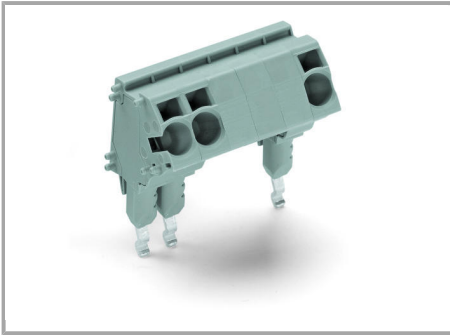
### CAE data

WSCAD Universe 2002-641	URL	Descărcare
-------------------------	-----	------------

Supus modificărilor.

## Installation Notes

### Installation



TOPJOB® S L-type test plug assembly:

- L-type test plug modules
- 
- L-type spacer modules (max. 10-pole) to skip terminal blocks
- 

## Familie de produse

### TOPJOB® S

TOPJOB® S: In various industrial applications and modern building installations, WAGO's wide and versatile range of rail-mount terminal blocks provides more than just reliable electrical connections.

[Afișare globală produse din familie.](#)

Supus modificărilor.