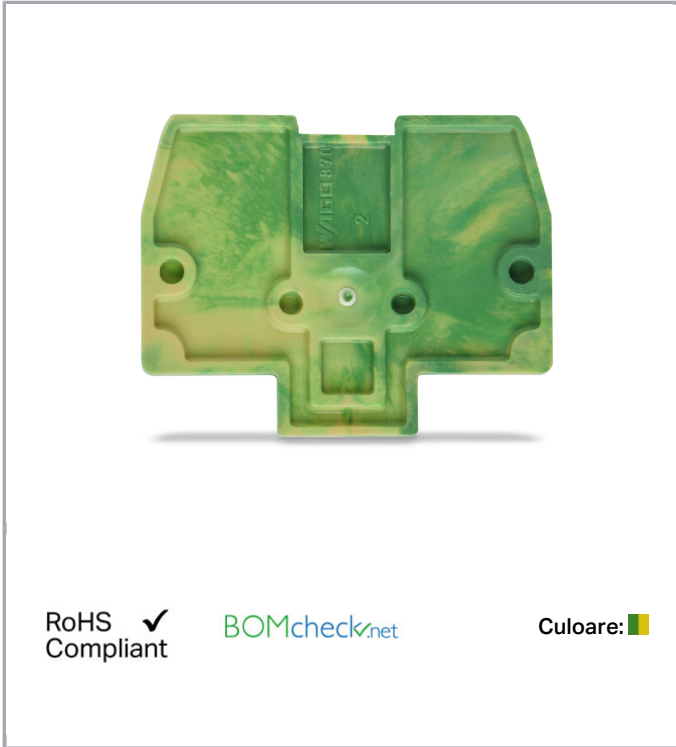


## Fișă tehnică | Număr articol: 870-926

End and intermediate plate; 2 mm thick; for 2-conductor ground conductor

Ex term; green-yellow

[www.wago.com/870-926](http://www.wago.com/870-926)



### Date

#### Geometrical Data

Width	2 mm / 0.079 inch
Height	27.5 mm / 1.083 inch
Depth	33.4 mm / 1.315 inch

#### Material Data

Color	green-yellow
Fire load	0,032 MJ
Weight	1,1 g

#### Commercial data

Product Group	16 (Rail Mounted Terminal Block with CCC)
Packaging type	BOX

Supus modificărilor.

WAGO Kontakttechnik GmbH & Co. KG  
/Representative Office Romania  
Sos. Pipera-Tunari nr. 1/1  
building 1, 2nd floor | 077190 Voluntari, Ilfov  
Tel.: +40-(0)31 421 85 68 | Email: info-RO@wago.com

Aveți întrebări despre produsele noastre?  
Vă stăm la dispoziție pentru preluarea apelului la +40 (0) 31 421 85 68.



Country of origin	CN
GTIN	4045454269869
Customs tariff number	85389099990

## Counterpart

### Descărcări Documentation

#### Additional Information

Technical explanations	Apr 3, 2019	pdf 2,1 MB	Descărcare
------------------------	-------------	---------------	------------

### CAD/CAE-Data

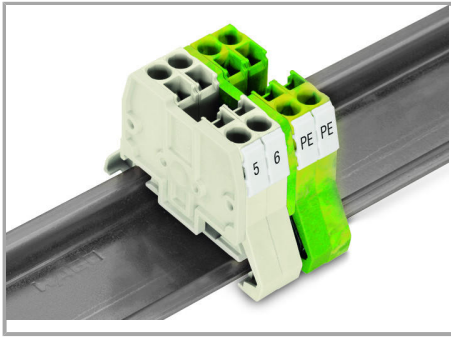
#### CAE data

EPLAN Data Portal 870-926	URL	Descărcare
WSCAD Universe 870-926	URL	Descărcare

### Installation Notes

#### Ex Application

Supus modificărilor.



In order to meet creepage and clearance requirements for Ex e applications, it is necessary to insert an end or intermediate plate between a through and a ground conductor terminal block.

End plates 870-923 (gray), 870-924 (orange) and 870-925 (light gray), as well as separator plates 870-928 (gray) and 870-929 (orange) cannot be assembled to 2-conductor ground Ex terminal blocks (870-907 /999-950).

Supus modificărilor.