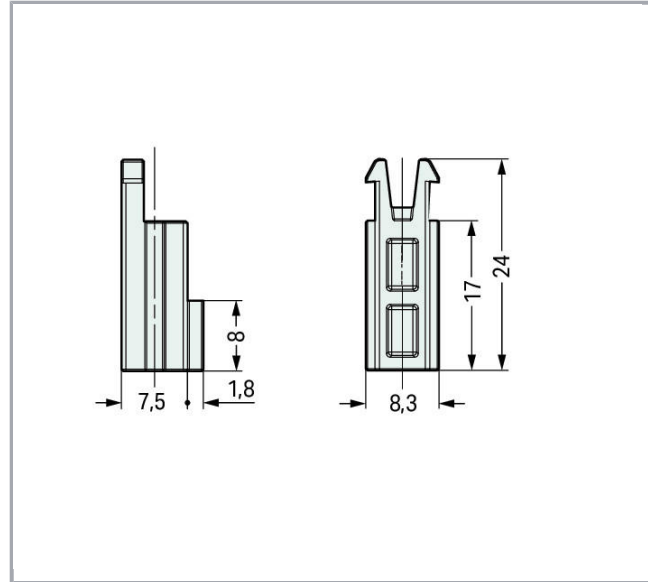
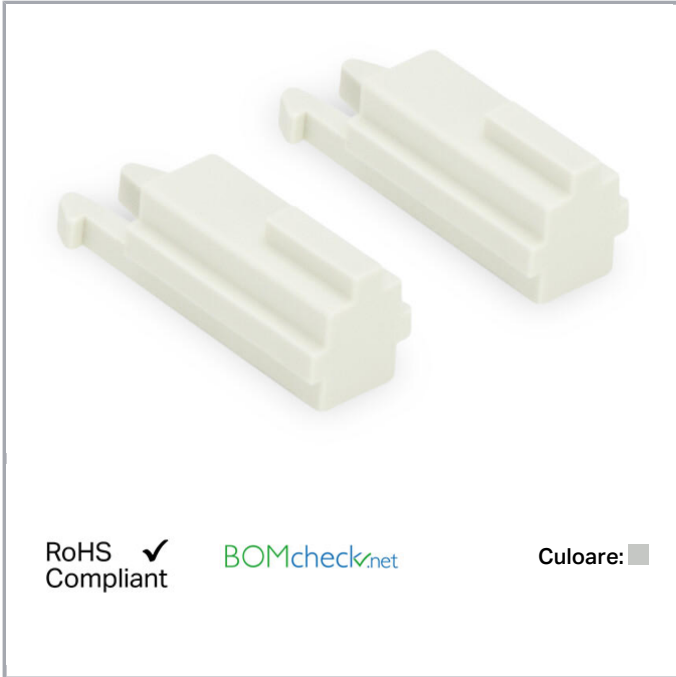


# Fișă tehnică | Număr articol: 831-321

Lockout pin; 2 parts; light gray

[www.wago.com/831-321](http://www.wago.com/831-321)



## Date

### Electrical data

### Ratings per IEC/EN 60664-1

Legend (ratings)

(III / 2) ≙ Overvoltage category III / Pollution degree 2

### Approvals per UL 1059

Approvals per

UL 1059

### Connection data

Number of connection types

1

### Geometrical Data

Width

8.3 mm / 0.327 inch

Height

9.3 mm / 0.366 inch

Supus modificărilor.

WAGO Kontakttechnik GmbH & Co. KG  
/Representative Office Romania  
Sos. Pipera-Tunari nr. 1/1  
building 1, 2nd floor | 077190 Voluntari, Ilfov  
Tel.: +40-(0)31 421 85 68 | Email: info-RO@wago.com

Aveți întrebări despre produsele noastre?  
Vă stăm la dispoziție pentru preluarea apelului la +40 (0) 31 421 85 68.



Depth	24 mm / 0.945 inch
-------	--------------------

### Mechanical data

Mounting type	Snap-in
Mounting type	Feed-through mounting

### Material Data

Color	light gray
Weight	0,8 g

### Commercial data

Packaging type	BOX
Country of origin	DE
GTIN	4055143564939
Customs tariff number	39269097900

### Counterpart

### Descărcări

#### Documentation

##### Additional Information

Technical explanations	Apr 3, 2019	pdf 3,6 MB	Descărcare
------------------------	-------------	---------------	------------

### CAD/CAE-Data

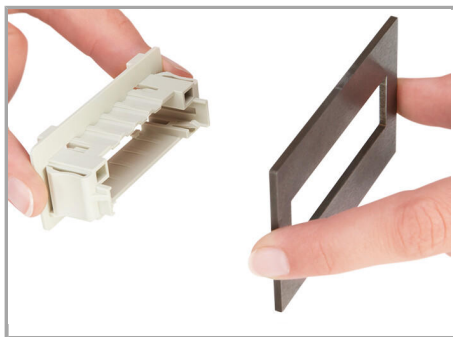
#### CAD data

2D/3D Models 831-321	URL	Descărcare
----------------------	-----	------------

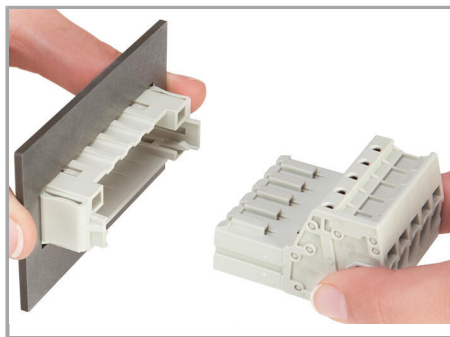
### Installation Notes

#### Assembly

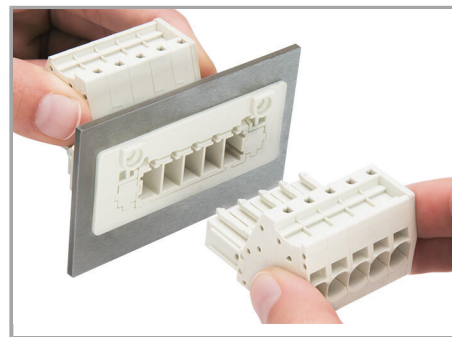
Supus modificărilor.



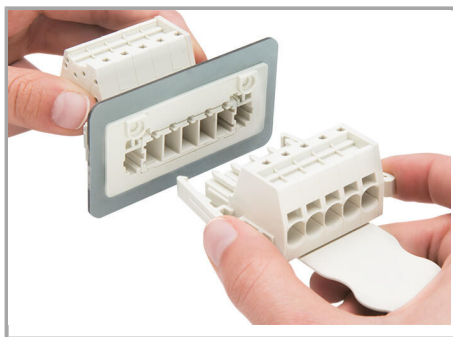
Insert the snap-in frame into the cutout.



Insert the male connector into the snap-in frame.



Inserting a female connector with 1 out lateral locking levers -lockout pins are inserted on both sides of the snap-in frame.



Inserting a female connector equipped with lateral locking levers.

Supus modificărilor.