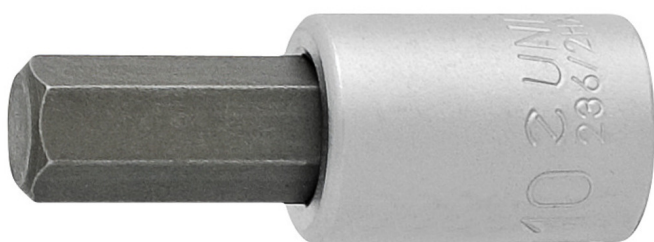


Capete chei tubule cu profil hexagonal exterior 3/8"

236/2HX

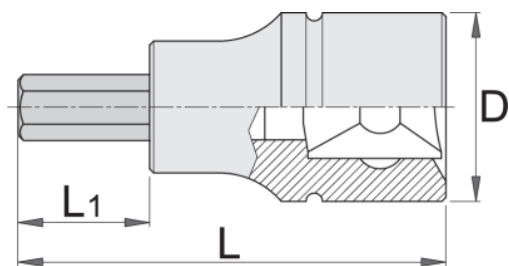


Profile






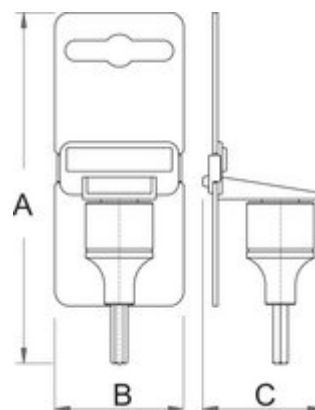
Caracteristicile produsului

- material: capete chei tubulare: crom-vanadiu, acoperire cromare
- bit: otel special de scule
- capul cheii este tratat in intregime
- conform cu standardul DIN 7422 (doarm pentru dimensiunile in mm)





Barcode	Hex Size	L	L1	D	Weight
612082	4	48	22	18	39
612083	5	48	22	18	39
612084	6	48	22	18	41
612085	8	48	22	18	45

		L	L1	D	
612086	10	48	22	18	56
617662	1/8"	48	22	18	39
617663	9/64"	48	22	18	39
617664	5/32"	48	22	18	39
617665	3/16"	48	22	18	39
617666	7/32"	48	22	18	41
617667	1/4"	48	22	18	41
617668	5/16"	48	22	18	45
617669	3/8"	48	22	18	56



Ambalaj pentru retail

	MA	MB	MC	
612082	115	44	34	44
612083	115	44	34	44
612084	115	44	34	46
612085	115	44	34	50
612086	115	44	34	61
617662	115	44	34	44
617663	115	44	34	44
617664	115	44	34	44
617665	115	44	34	44
617666	115	44	34	46
617667	115	44	34	46
617668	115	44	34	50
617669	115	44	34	61



Ambalaj pentru transport

Barcode	Hand icon	TA	TB	TC	Weight icon
612082	4	93	144	57	301
612083	4	93	144	57	301
612084	4	93	144	57	309
612085	4	93	144	57	325
612086	4	93	144	57	369
617662	4	93	144	57	301
617663	4	93	144	57	301
617664	4	93	144	57	301
617665	4	93	144	57	301
617666	4	93	144	57	309
617667	4	93	144	57	309
617668	4	93	144	57	325
617669	4	93	144	57	369