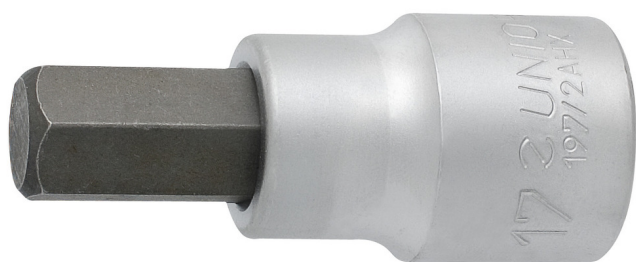


Capete chei tubulare 3/4" cu profil hexagonal

197/2AHX

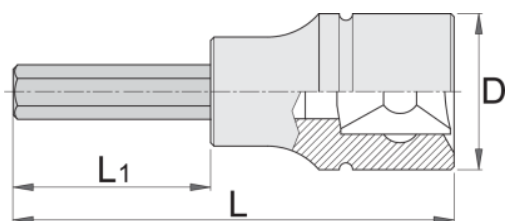





Profile



Caracteristicile produsului

- material: capete chei tubulare: crom-vanadiu, acoperire cromare
- bit: otel special de scule
- capul cheii este tratat in intregime
- produs conform cu standardul DIN 7422 (doar pentru dimensiunile in mm)



		D	L	L1	
619836	14	33.85	80	30	267
619837	17	33.85	80	30	275
619838	19	33.85	80	30	364
619839	22	33.85	80	30	381



Ambalaj pentru retail

Barcode	MA	MB	MC	Height
619836	190	58	36	290
619837	190	58	36	300
619838	190	58	36	385
619839	190	58	36	410

Ambalaj pentru transport

Barcode	Hand icon	TA	TB	TC	Height
619836	1	70	240	48	360
619837	1	70	240	48	370
619838	1	70	240	48	455
619839	1	70	240	48	480