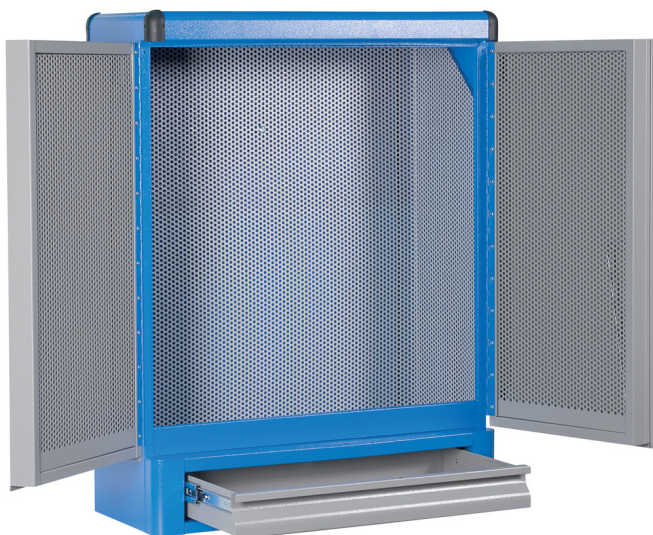


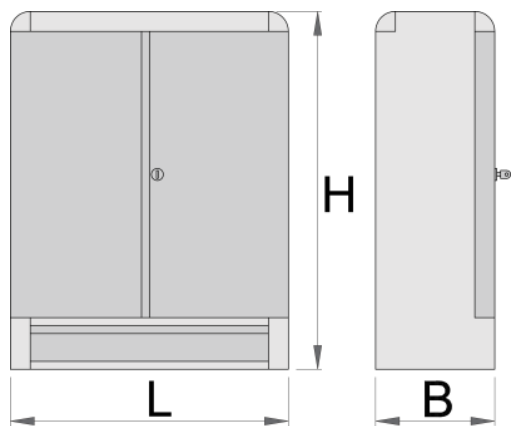
# Dulap de scule

948E1

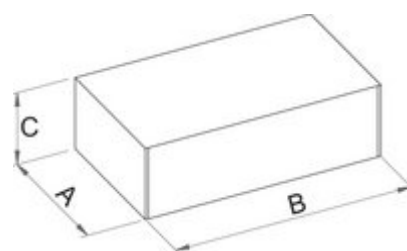


## Caracteristicile produsului

- tabla cu gauri perforate
- sistem de inchidere
- lock with key included also foam keyring
- sertare pe rulmenti
- vopsele cu vopsele ecologice fara cadmiu si plumb
- 1 setar, dimensiunea 575x285x75
- interiorul dulapului este prevazut cu tabla perforata



Barcode	L	B	H	Weight
612215	700	300	900	27500



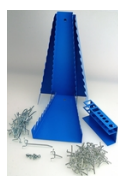
### Ambalaj pentru retail

Barcode	MA	MB	MC	Weight
612215	740	345	945	27500

### Ambalaj pentru transport

Barcode	Quantity	TA	TB	TC	Weight
612215	1				

### Piese de schimb



Accesorii pentru 948E1