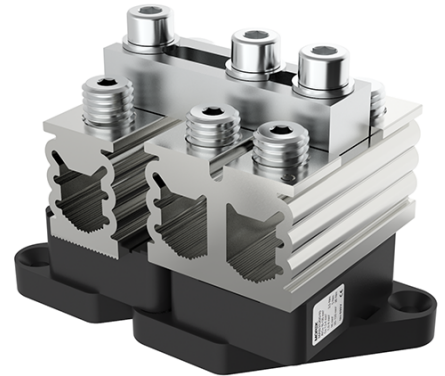


## OT-PEN120 Al/Cu 16-120mm<sup>2</sup> Connector

|  |                                      |
|--|--------------------------------------|
| <b>SKU</b>                                 | MAB3120S10                           |
| <b>EAN</b>                                 | 4744397014689                        |
| <b>Color</b>                               | Black                                |
| <b>Wire material</b>                       | Al/Cu                                |
| <b>Cross-section min. (mm<sup>2</sup>)</b> | 16                                   |
| <b>Cross-section max. (mm<sup>2</sup>)</b> | 120                                  |
| <b>Input wire min. (mm<sup>2</sup>)</b>    | 16                                   |
| <b>Input wire max. (mm<sup>2</sup>)</b>    | 120                                  |
| <b>Output wire min. (mm<sup>2</sup>)</b>   | 16                                   |
| <b>Output wire max. (mm<sup>2</sup>)</b>   | 120                                  |
| <b>Number of connections</b>               | 6                                    |
| <b>Nominal voltage (V)</b>                 | 690                                  |
| <b>Service temperature (°C)</b>            | 80                                   |
| <b>Material</b>                            | Tin-plated aluminium, polyamide PA66 |
| <b>Mounting method</b>                     | Screw                                |
| <b>Item width (mm)</b>                     | 64                                   |
| <b>Item length (mm)</b>                    | 120                                  |
| <b>Item height (mm)</b>                    | 87                                   |



|                               |  |
|-------------------------------|--|
| <b>Item weight (g)</b>        | 573  |
| <b>Screw</b>                  | Hex 6  |
| <b>Tightening torque (Nm)</b> | 5 Nm (16 mm <sup>2</sup> ) 26 Nm (25 - 120 mm <sup>2</sup> ) |
| <b>IP rating</b>              | IP00   |
| <b>CN8 code</b>               | 85369001   |
| <b>Package quantity (pcs)</b> | 5  |