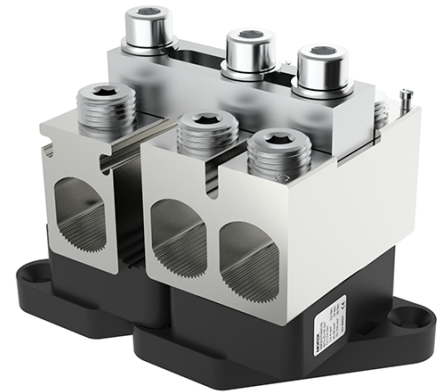


## OT-PEN150 Al/Cu 25-150mm<sup>2</sup> Connector

<b>SKU</b>	MAB3150S10
<b>EAN</b>	4744397014696
<b>Color</b>	Black
<b>Wire material</b>	Al/Cu
<b>Cross-section min. (mm<sup>2</sup>)</b>	25
<b>Cross-section max. (mm<sup>2</sup>)</b>	150
<b>Input wire min. (mm<sup>2</sup>)</b>	25
<b>Input wire max. (mm<sup>2</sup>)</b>	150
<b>Output wire min. (mm<sup>2</sup>)</b>	25
<b>Output wire max. (mm<sup>2</sup>)</b>	150
<b>Number of connections</b>	6
<b>Nominal voltage (V)</b>	690
<b>Service temperature (°C)</b>	80
<b>Material</b>	Tin-plated aluminium, polyamide PA66
<b>Mounting method</b>	Screw
<b>Item width (mm)</b>	64
<b>Item length (mm)</b>	120
<b>Item height (mm)</b>	91



<b>Item weight (g)</b>	605
<b>Screw</b>	Hex 6
<b>Tightening torque (Nm)</b>	14 Nm (25 - 50 mm <sup>2</sup> ) 30 Nm (70 - 150 mm <sup>2</sup> )
<b>IP rating</b>	IP00
<b>CN8 code</b>	85369001
<b>Package quantity (pcs)</b>	5