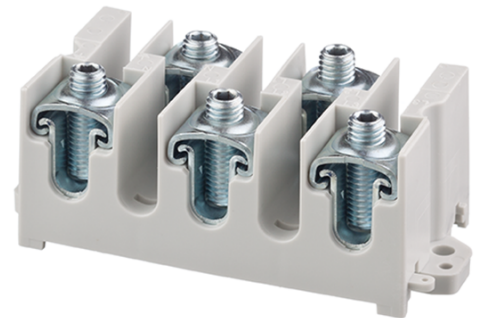


MAB16x5 Terminal plate 5xCu 2,5-16 mm² 5x124A 690V

SKU	MAB5016A10
EAN	4744397014627
Color	Grey
Wire material	Cu
Cross-section min. (mm²)	2,5
Cross-section max. (mm²)	16
Input wire min. (mm²)	2,5
Input wire max. (mm²)	16
Output wire min. (mm²)	2,5
Output wire max. (mm²)	16
Number of connections	5
Nominal current (A)	124
Nominal voltage (V)	690
Service temperature (°C)	80
Material	Zinc-plated steel, polyamide PA66
Mounting method	DIN rail, screw
Item width (mm)	46
Item length (mm)	101



Item height (mm)	50
Item weight (g)	145
Screw	Hex 4
Tightening torque (Nm)	3 Nm (2,5 - 6 mm ²) 5 Nm (10 - 16 mm ²)
IP rating	IP00
CN8 code	85369001
Package quantity (pcs)	50