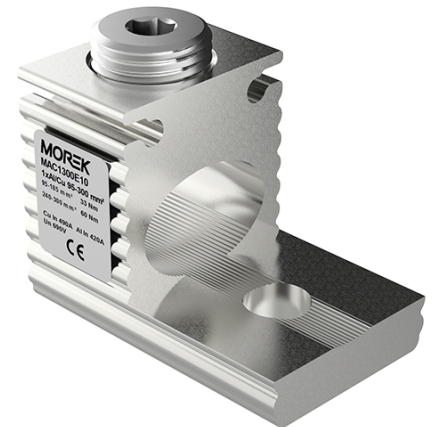


## OT300 1xAl/Cu 95-300 mm<sup>2</sup> Universal connector

<b>SKU</b>	MAC1300E10
<b>EAN</b>	4744397014887
<b>Color</b>	Natural
<b>Wire material</b>	Al/Cu
<b>Cross-section min. (mm<sup>2</sup>)</b>	95
<b>Cross-section max. (mm<sup>2</sup>)</b>	300
<b>Input wire min. (mm<sup>2</sup>)</b>	95
<b>Input wire max. (mm<sup>2</sup>)</b>	300
<b>Number of connections</b>	1
<b>Nominal current (A)</b>	490 (Cu) / 420 (Al)
<b>Nominal voltage (V)</b>	690
<b>Service temperature (°C)</b>	80
<b>Material</b>	Tin-plated aluminium
<b>Mounting method</b>	Screw M12
<b>Item width (mm)</b>	40
<b>Item length (mm)</b>	64
<b>Item height (mm)</b>	48
<b>Item weight (g)</b>	134
<b>Hole diameter (mm)</b>	12,5



<b>Screw</b>	Hex 8
<b>Tightening torque (Nm)</b>	33 Nm (95 - 185 mm <sup>2</sup> ) 60 Nm (240 - 300 mm <sup>2</sup> )
<b>IP rating</b>	IP00
<b>Certification</b>	EN 61238-1:2003
<b>CN8 code</b>	85369001
<b>Package quantity (pcs)</b>	10