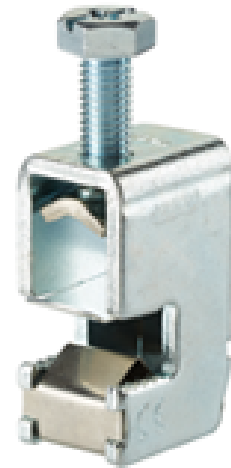


## MAE7010H 16-70mm<sup>2</sup>, 10mm bar bimetallic bow terminal

<b>SKU</b>	MAE0701H15
<b>EAN</b>	4744397017970
<b>Color</b>	Natural
<b>Wire material</b>	Al/Cu
<b>Cross-section min. (mm<sup>2</sup>)</b>	16
<b>Cross-section max. (mm<sup>2</sup>)</b>	70
<b>Input wire min. (mm<sup>2</sup>)</b>	16
<b>Input wire max. (mm<sup>2</sup>)</b>	70
<b>Number of connections</b>	1
<b>Nominal current (A)</b>	400
<b>Nominal voltage (V)</b>	1000
<b>Material</b>	Zinc-plated steel
<b>Mounting method</b>	Busbar
<b>Item width (mm)</b>	21
<b>Item length (mm)</b>	27,5
<b>Item height (mm)</b>	46
<b>Item weight (g)</b>	68
<b>Screw</b>	Pz 3 / SW 13
<b>Flexibar max. width (mm)</b>	9



<b>Flexibar max. layers</b>	6
<b>Tightening torque (Nm)</b>	12
<b>IP rating</b>	IP00
<b>CN8 code</b>	85369001
<b>Package quantity (pcs)</b>	10