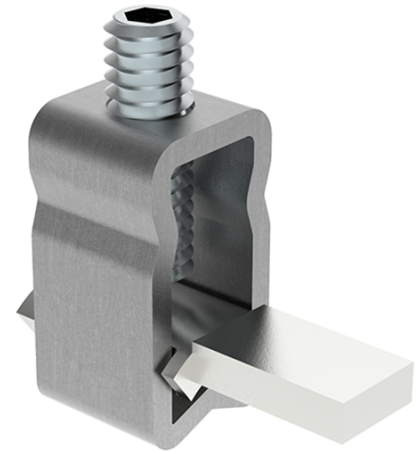


OL70T Al/Cu 1x6-70mm² Pin T Heavy duty connector

SKU	MAJ1072E10
EAN	4744397014733
Color	Natural
Wire material	Al/Cu
Cross-section min. (mm²)	6
Cross-section max. (mm²)	70
Input wire min. (mm²)	6
Input wire max. (mm²)	70
Number of connections	1
Nominal current (A)	270
Nominal voltage (V)	690
Service temperature (°C)	80
Material	Stainless steel, tin-plated copper
Mounting method	Device
Item width (mm)	16,2
Item length (mm)	38
Item height (mm)	30
Item weight (g)	44
Screw	Hex 4



Tightening torque (Nm)	5,6 Nm
IP rating	IP00
Certification	SFS2663:1975/ UL 486E
CN8 code	85369001
Package quantity (pcs)	30