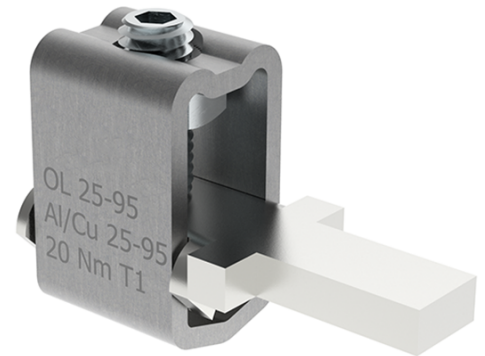


OL95T Al/Cu 1x25-95mm² Pin T Heavy duty connector

SKU	MAJ1096E10
EAN	4744397014757
Color	Natural
Wire material	Al/Cu
Cross-section min. (mm²)	25
Cross-section max. (mm²)	95
Input wire min. (mm²)	25
Input wire max. (mm²)	95
Number of connections	1
Nominal current (A)	320
Nominal voltage (V)	690
Service temperature (°C)	80
Material	Stainless steel, tin-plated copper
Mounting method	Device
Item width (mm)	18
Item length (mm)	50
Item height (mm)	33
Item weight (g)	69
Screw	Hex 4



Tightening torque (Nm)	20 Nm
IP rating	IP00
Certification	SFS2663:1975/ UL 486E
CN8 code	85369001
Package quantity (pcs)	15