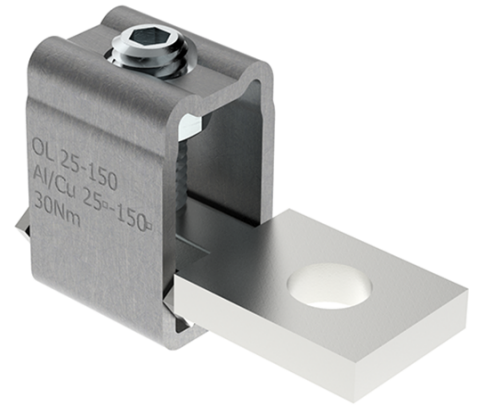


## OL150 Al/Cu 1x25-150mm<sup>2</sup> Heavy duty connector

<b>SKU</b>	MAJ1150E10
<b>EAN</b>	4744397014764
<b>Color</b>	Natural
<b>Wire material</b>	Al/Cu
<b>Cross-section min. (mm<sup>2</sup>)</b>	25
<b>Cross-section max. (mm<sup>2</sup>)</b>	150
<b>Input wire min. (mm<sup>2</sup>)</b>	25
<b>Input wire max. (mm<sup>2</sup>)</b>	150
<b>Number of connections</b>	1
<b>Nominal current (A)</b>	285 (Cu) / 230 (Al)
<b>Nominal voltage (V)</b>	690
<b>Service temperature (°C)</b>	80
<b>Material</b>	Stainless steel, tin-plated copper
<b>Mounting method</b>	Screw M10
<b>Item width (mm)</b>	23
<b>Item length (mm)</b>	60
<b>Item height (mm)</b>	38
<b>Item weight (g)</b>	130
<b>Hole diameter (mm)</b>	11



<b>Screw</b>	Hex 4
<b>Tightening torque (Nm)</b>	30 Nm
<b>IP rating</b>	IP00
<b>Certification</b>	SFS2663:1975/ UL 486E
<b>CN8 code</b>	85369001
<b>Package quantity (pcs)</b>	15