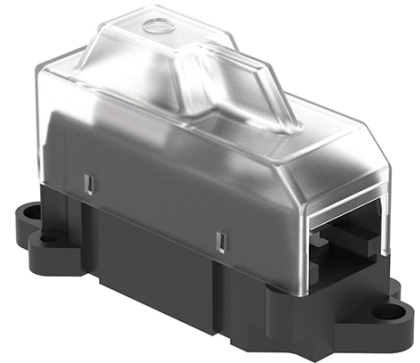


OLI185 Al/Cu 1x95-185mm² IP20 Heavy duty connector

SKU	MAJ1185S10
EAN	4744397018731
Color	Natural
Wire material	Al/Cu
Cross-section min. (mm²)	95
Cross-section max. (mm²)	185
Input wire min. (mm²)	95
Input wire max. (mm²)	185
Number of connections	1
Nominal current (A)	400
Nominal voltage (V)	690
Service temperature (°C)	80
Material	Stainless steel, tin-plated copper, polyamide PA66, polycarbonate
Mounting method	DIN rail, screw
Item width (mm)	49
Item length (mm)	113
Item height (mm)	67
Item weight (g)	237



Screw	Hex 5
Tightening torque (Nm)	40 Nm
IP rating	IP20
CN8 code	85369001
Package quantity (pcs)	3