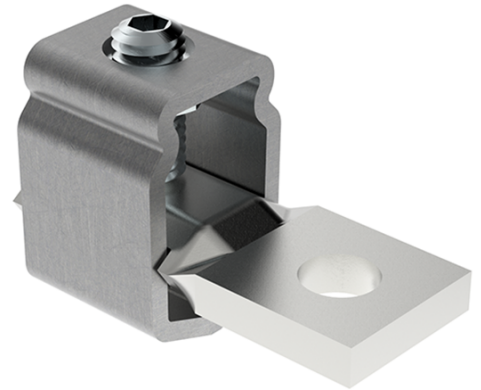


OL240M Al/Cu 1x95-240mm² Heavy duty connector

SKU	MAJ1240E10
EAN	4744397014788
Color	Natural
Wire material	Al/Cu
Cross-section min. (mm²)	95
Cross-section max. (mm²)	240
Input wire min. (mm²)	95
Input wire max. (mm²)	240
Number of connections	1
Nominal current (A)	400
Nominal voltage (V)	690
Service temperature (°C)	80
Material	Stainless steel, tin-plated copper
Mounting method	Screw M10
Item width (mm)	26,3
Item length (mm)	61
Item height (mm)	40
Item weight (g)	140
Hole diameter (mm)	11



Screw	Hex 5
Tightening torque (Nm)	40 Nm
IP rating	IP00
Certification	SFS2663:1975/ UL 486E
CN8 code	85369001
Package quantity (pcs)	15