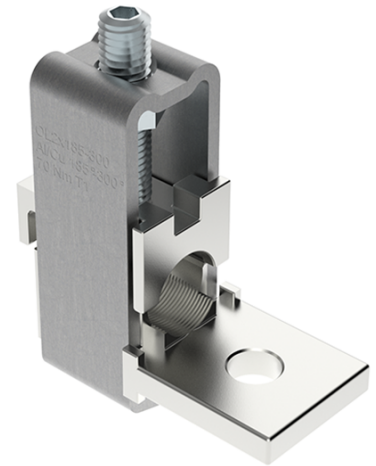


OL300-2 Al/Cu 2x185-300mm² Heavy duty connector

| | |
|--|------------------------------------|
| SKU | MAJ2300E10 |
| EAN | 4744397014825 |
| Color | Natural |
| Wire material | Al/Cu |
| Cross-section min. (mm²) | 185 |
| Cross-section max. (mm²) | 300 |
| Input wire min. (mm²) | 185 |
| Input wire max. (mm²) | 300 |
| Number of connections | 2 |
| Nominal current (A) | 800 |
| Nominal voltage (V) | 690 |
| Service temperature (°C) | 80 |
| Material | Stainless steel, tin-plated copper |
| Mounting method | Screw M12 |
| Item width (mm) | 38 |
| Item length (mm) | 85 |
| Item height (mm) | 91 |
| Item weight (g) | 544 |
| Hole diameter (mm) | 13 |



| | |
|-------------------------------|-----------------------|
| Screw | Hex 6 |
| Tightening torque (Nm) | 70 Nm |
| IP rating | IP00 |
| Certification | SFS2663:1975/ UL 486E |
| CN8 code | 85369001 |
| Package quantity (pcs) | 3 |