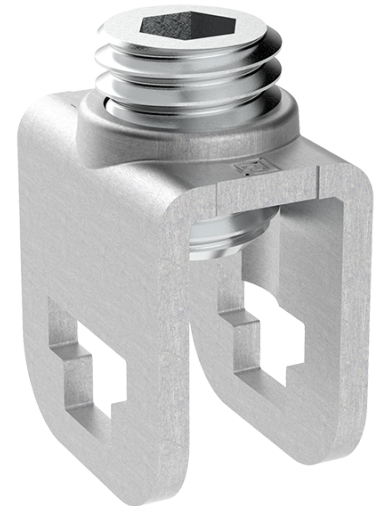


MAM 55-35 N/PE 5x5mm 2,5-35mm² modular connector

SKU	MAM5535E10
EAN	4744397023292
Color	Natural
Wire material	Cu
Cross-section min. (mm²)	2,5
Cross-section max. (mm²)	35
Input wire min. (mm²)	2,5
Input wire max. (mm²)	35
Number of connections	1
Nominal voltage (V)	600
Service temperature (°C)	80
Material	Zinc-plated steel
Mounting method	Busbar
Item width (mm)	12,6
Item length (mm)	17,8
Item height (mm)	20,6
Item weight (g)	14
Hole diameter (mm)	5x5
Screw	Hex 5



Tightening torque (Nm)	4 Nm
IP rating	IP00
CN8 code	85369010
Package quantity (pcs)	500