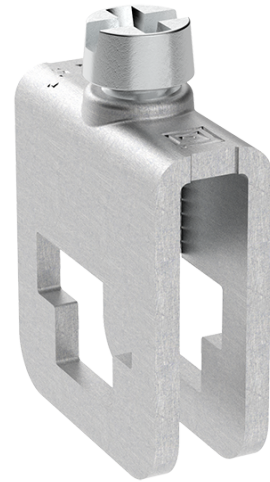


MAM 66-6 N/PE 6x6mm 0,75-6mm² modular connector

SKU	MAM6606E10
EAN	4744397023285
Color	Natural
Wire material	Cu
Cross-section min. (mm²)	0,75
Cross-section max. (mm²)	6
Input wire min. (mm²)	0,75
Input wire max. (mm²)	6
Number of connections	1
Nominal voltage (V)	600
Service temperature (°C)	80
Material	Zinc-plated steel
Mounting method	Busbar
Item width (mm)	5,9
Item length (mm)	14,8
Item height (mm)	20,2
Item weight (g)	5
Hole diameter (mm)	6x6
Screw	Pozidriv



Tightening torque (Nm)	1,2 Nm
IP rating	IP00
CN8 code	85369010
Package quantity (pcs)	1000