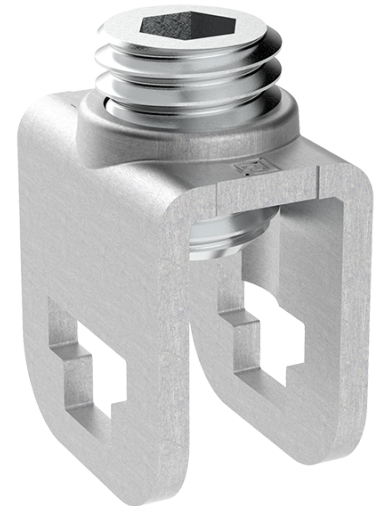


## MAM 66-35 N/PE 6x6mm<sup>2</sup>,5-35mm<sup>2</sup> modular connector

<b>SKU</b>	MAM6635E10
<b>EAN</b>	4744397023308
<b>Color</b>	Natural
<b>Wire material</b>	Cu
<b>Cross-section min. (mm<sup>2</sup>)</b>	2,5
<b>Cross-section max. (mm<sup>2</sup>)</b>	35
<b>Input wire min. (mm<sup>2</sup>)</b>	2,5
<b>Input wire max. (mm<sup>2</sup>)</b>	35
<b>Number of connections</b>	1
<b>Nominal voltage (V)</b>	600
<b>Service temperature (°C)</b>	80
<b>Material</b>	Zinc-plated steel
<b>Mounting method</b>	Busbar
<b>Item width (mm)</b>	12,6
<b>Item length (mm)</b>	17,8
<b>Item height (mm)</b>	20,6
<b>Item weight (g)</b>	14
<b>Hole diameter (mm)</b>	6x6
<b>Screw</b>	Hex 5



<b>Tightening torque (Nm)</b>	4 Nm
<b>IP rating</b>	IP00
<b>CN8 code</b>	85369010
<b>Package quantity (pcs)</b>	500