

a different standard

alloccaccoc

Our vision: a different standard

We critically look at well established, commonplace products, and rethink these. Our ultimate goal by doing so is to create a different standard.

To do so, we keep the following in mind:

The core value

When designing a product, it is important to think about what the consumer wants. In the case of the PowerCube, one does not want a power outlet. One wants to have the freedom to work wherever it is the most convenient. Ultimately, we would design a solution by which you do not need power sockets anymore. Our customer does not want a power socket, but a power solution.

Affordability

Design often comes with a price tag. The reason for this is that many designers start with a small batch, and calculate their prices bottom-up: the price is defined according to the manufacturing cost. We work top-down: we define an ideal consumer price first, and focus throughout the whole design process to reach that goal.

As our aim is to set a new standard, a large public should be able to afford our products. By directly focusing on mass production, we seek our profits on the long term and at the front end: by negotiating volume discounts at our suppliers of parts and raw materials.

In this brochure, we will explain the different products we offer, and how each of these set a different standard. But let us first introduce ourselves...



Allocacoc

Allocacoc focuses on developing innovative consumer electronics and launching these onto the market.

What is often seen in product development is that great product concepts are unable to leave the drawing board, as the necessary production facilities and knowledge of manufacturing techniques are missing.

At Allocacoc, this is not the case: we are able to manufacture the products we design in large quantities as we have our own production facilities, what offers many advantages:

Firstly, the production capacity can be increased in a very short time span, offering us more flexibility production-wise.

Another advantage of having our own factory is that it enables us to offer our clients a good price as no unnecessary middlemen are involved: we can deliver directly to an importer or distributor.

Lastly, this full control over the production process enables us to closely monitor our product's quality and enables us to tweak and optimize the production process. This allows us to try out innovative production techniques which would otherwise be impossible.



Our headquarters at Delft, the Netherlands



Our factory in Suzhou, China

A few company insights...

How it all started...

The first product of Allocacoc was the PowerCube. However, the initial sketches of this product looked very different from the version currently available on the market: the mounting system was just a plug, there was no USB, and also the grounding was absent.

A global company

To set a different standard, you have to act on a global scale.

Therefore we exhibit at the most influential trade fairs within our industry, like e.g. the CES in the US, CeBIT in Germany and Computex in Taiwan. This did not go unnoticed: we got covered by major news channels, newspapers and magazines while doing so.

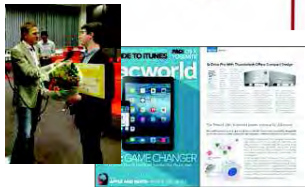
We also won several awards: like e.g. the Good Design Award and Red Dot Award. And many more are expected!

A healthy company

Allocacoc sponsors its own football team, with their home turf in Leiden, the Netherlands.

Working at Allocacoc

We have a very dedicated team of employees, and make sure we offer them a nice and inspiring environment to work in. Take our Shanghai office for example: this is designed as a bar!



Our office in Shanghai, China



The PowerCube

Often you arrive at your office, at home, in a meeting, or somewhere else and find it difficult to reach for a nearby available power outlet to charge your notebook or cell phone.

The PowerCube will eliminate this problem: The number of outlets can be expanded, enabling you to mount a tailored power source within reach.

On the following pages you can explore some of its characteristics...





red dot award winner

Award-winning design
The PowerCube product family won several awards, amongst which the coveted Red Dot award, a prize for good industrial design.

Expand
The PowerCube is modular: you can create the setup you prefer by adding more PowerCubes to the PowerCube [Extended], mounted on your desktop.



No obstructions
Plugs cannot obstruct each other, as each plug connects to a different side of the PowerCube.



Safety
All types of the PowerCube are thoroughly tested, and certified depending on the standards that are applicable within your region. Also, all contacts are grounded and child-proof.

Several socket types available
As throughout the world various kinds of sockets are in use, we designed PowerCubes for a variety of different socket types. On the next page of this brochure you can find what version is suitable for your country.

Mount it anywhere
The [Extended] versions of the PowerCube come with a mounting dock, enabling you to mount the PowerCube anywhere, also upside-down underneath your desk, or on a wall. In this way, you always have a power source within reach. And if you need it elsewhere, it is easy to remove again due to the removable tape.



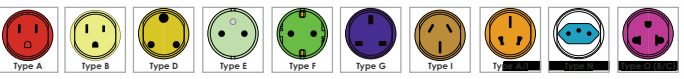
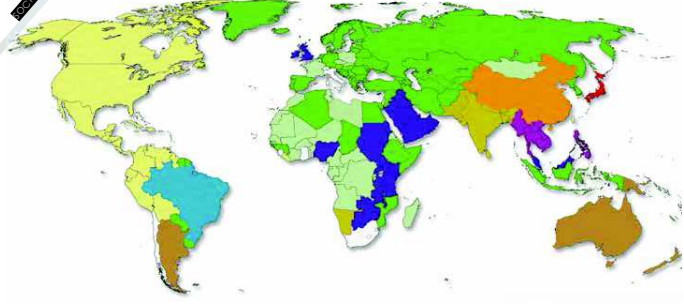
CableFix
Besides a docking station, both [Extended] versions of the PowerCube also include a CableFix to align the power cord neatly.



USB-output
The USB-versions of the PowerCube come with powered dual USB ports, enabling you to charge a wide variety of devices, including tablet computers (like the iPad) and smartphones.

Socket types

Throughout the world, many types of electrical outlets are in use. As you can see on the map beneath, we offer the majority of socket types. All these types are identified by a letter, beneath the map you can see what letter corresponds to your country:



Some examples of the different types we offer:



PowerCube

PowerCube | Original |
This was the original concept of the PowerCube, featuring 5 additional power outlets. Because of the PowerCube's design, power plugs are unlikely to block each other.

technical specifications	
Voltage	100-240V; 13-16A ²
Outlets	5
Available socket types	Type A, B, D, E, F, G, I, A/I, N, O
Available colours	Green, Blue, Red, Grey



Original (type B)

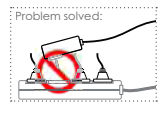
PowerCube | Original USB |
This PowerCube has the same functionality as the PowerCube | Original |, and also offers a dual USB-outlet. The USB ports enable the user to charge a cell phone, camera, MP3-player, GPS, etc... From 2010 onwards, most new cell phones and other portable electronics are charged via USB, to reduce the amount of different chargers required.

technical specifications	
USB output [V]	2 x 5V
USB output [mA]	2100 mA (10W) ¹
Voltage	100-240V; 13-16A ²
Outlets	4
Available socket types	Type A, B, D, E, F, G, I, A/I, N, O
Available colours	Green, Blue, Red, Grey



Original USB (type I)

compatible with iPhone iPad



¹ Able to charge all USB-charge enabled devices, including the iPhone and iPad
² Depends on local legislation

PowerCube | Extended |

Besides offering all functionality of the PowerCube Original, this version also features a cable and five power sockets. With the included docking system, this PowerCube can be mounted anywhere: on your desktop, on the wall, beneath your tabletop, ...

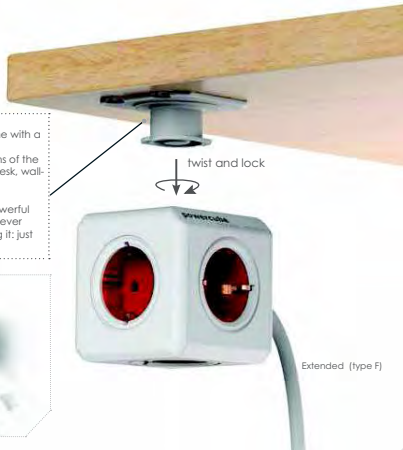
technical specifications	
Voltage	100-240V; 13-16A ²
Cord length	1.5 - 3m
Mounting system	Included
CableFix	Included
Outlets	5
Available socket types	Type A, B, D, E, F, G, I, A/I, N, O
Available colours	Green*, Blue*, Red, Grey*

*For 1.5m version only

Mounting system

Both [Extended] versions of the PowerCube come with a stick-on mounting system. With the included mount, the [Extended] versions of the PowerCube can be placed anywhere: on your desk, wall-mounted, ...the options are endless.

We carefully selected the sticky tape to be as powerful as possible, and yet leave no traces if you would ever decide to remove it, which is as easy as mounting it: just pull the tabs and the dock will come off.



PowerCube | Extended USB |

This is the most extensive version of the PowerCube. It has a standard 1.5 meter extension cord fitted to it, so it can be mounted anywhere to have a power outlet within reach. To do this, a stick-on dock is included. An ideal location is your desktop: there is no more need to duck beneath your desk to plug in your laptop! This PowerCube also includes a powered USB port, so your mobile devices (including tablet computers!) can be recharged from your desktop.



technical specifications	
USB output [V]	2 x 5V
USB output [mA]	2100 mA (10W) ¹
Voltage	100-240V; 13-16A ²
Cord length	1.5 - 3m
Mounting system	Included
CableFix	Included
Outlets	4
Available socket types	Type A, B, D, E, F, G, I, A/I, N, O
Available colours	Green*, Blue*, Red*, Grey

*For 1.5m version only

USB-output

The PowerCube Extended USB comes with powered dual USB ports. This enables you to charge a wide variety of devices, including tablet computers (like the iPad) and smartphones, right from your desktop without the need to power up a laptop or using a separate charger.



¹ Able to charge all USB-charge enabled devices, including the iPhone and iPad
² Depends on local legislation

The PowerCube ReWirable: a different standard for travel adapters

Travel adapters have several shortcomings:

- **safety:** most travel adapters cannot be certified because of their dimensions
- **only one outlet:** nowadays we probably carry more than one electronic device with us.
- **we believe more consumers use travel adapters to plug their home device into a foreign socket, than a foreign plug to a home socket.** Think about it... and look what is available on the market.
- **optimal use:** as product designers we hate it when products are not used frequently. With travel adapters this is the case: when returning home they end up in a drawer. Such a waste!

Therefore it is clear that a different standard is required for the travel market: the PowerCube ReWirable.



Universal socket - plug connection
The PowerCube ReWirable comes with a worldwide standard receptacle (fused for max 6-10A). Plug in an old computer cable and convert your PowerCube into an extension cord.



A new level of environmental friendliness

The PowerCube ReWirable sets a different standard for "green" products. We all know about recycling, which will degrade the product and material. Much more green is re-using old products!

Almost everyone has a drawer full of cables from old computers, printers, monitors, scanners, fax machines, etc. Why not turn them into power extension cords? In addition, you can choose your own cable length.

And in case you go on a trip, plug out the cable and use a cable with the plug of the country you travel to. Therefore you will never lose a travel adapter again, as you can use it as a standard power strip when you are at home. Optimal use of a product!

*Cables are not included, otherwise we would not be saving the environment of course!

PowerCube | ReWirable |

This version features 5 additional power outlets. Despite its compact design, power plugs are unlikely to block one another. At the back, the common IEC adapter can be found, so that you can use it with the additional plugs - or any cable you have laying around!

Technical specifications	
Voltage	100-240V; 6-10A ²
Outlets	5
Fuse	Replacable
Available socket types	Type A, B, D, E, F, G, I, A/I, N, O
Available plugs	DE/FR, UK, USA, AU
Standard colour	Orchid Purple



PowerCube | ReWirable USB |

This PowerCube has the same functionality as the PowerCube | ReWirable |, but also offers a dual USB-output. These USB ports enable the user to charge a cellphone, camera, MP3-player, GPS, etc... Nearly all electronic devices nowadays offer a USB-charging option.

Technical specifications	
USB output (V)	2 x 5V
USB output (mA)	2100 mA (10W) ¹
Voltage	100-240V; 6-10A ²
Fuse	Replacable
Outlets	4
Available socket types	Type A, B, D, E, F, G, I, A/I, N, O
Available plugs	DE/FR, UK, USA, AU
Standard colour	Orchid Purple

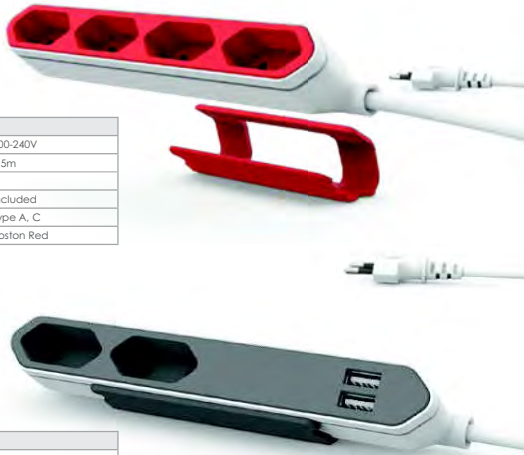


compatible with iPhone/iPad

¹ Able to charge all USB-charge enabled devices, including the iPhone and iPad
² Depends on local legislation

PowerBar

The PowerBar is a great new addition to your desktop; due to its flat design, it is an inobtrusive and elegant solution to connect your ungrounded plugs. As it is delivered with a mounting bracket it can conveniently be mounted beneath a desk or table. The USB-version allows you to charge all your mobile devices.



PowerBar	
Voltage	100-240V
Cord length	1.5m
Sockets	4
Mounting bracket	Included
Available socket types	Type A, C
Standard colour	Boston Red

PowerBar USB	
Voltage	100-240V
Cord length	1.5m
Sockets	2
Mounting bracket	Included
USB output (V)	2 x 5V
USB output (mA)	2100 mA (10W)
Available socket types	Type A, C
Standard colour	Trolley Grey

Power | Extension |

Ideally we would not need power cords, as they restrict us in our mobility. As wireless energy is not within widespread use and at least for higher power is not expected anytime soon, we developed the Extension. This product will allow you to extend your working space, as you can also have a power socket further away now.

As a regular extension cord is hardly new, we of course gave a different twist to it, and did so quite literally; you can switch the power on or off by revolving the power plug.

Did you know?
The Power | Extension | was selected as one of the 5 greatest innovations in the Netherlands in 2014



The Power | Extension | comes with a grounded 3-5m (10-16ft) cable and child-proof lock. Combined with the unique on/off switch it creates a safe & smart alternative to standard extension cords. And as a regular socket is used, the Power | Extension | is compatible with all our other products, allowing you to create a set up that tailors to your needs.

Technical specifications	
Voltage	230V
Cord length	3-5m
On/Off switch	yes
Outlets	1
Available socket types	Type E, F
Standard colour	Mystic Magenta

PowerCube Remote

Having set a different standard for extension cords, many people have asked us why we do not have an ON/OFF switch on the PowerCube to cut standby power usage. Simply because we do not find it user-friendly: as a power strip is often hidden behind furniture, the on/off switch is hard to reach. The solution is to add a remote, however existing remote-controlled power sockets on the market do not offer a convenient solution, as the remote gets lost or batteries run out.

Our creation is the PowerCube Remote, which takes user-friendliness to a whole new standard. With one big "Step-On" button on the PowerRemote you can turn the PowerCube ON/OFF from a distance using either your hands or feet.

The reusable "Slicky-Pad" on the remote can be used to attach it wherever it is easy to find and reach, so you will never lose it. Furthermore, the modular design concept allows the PowerRemote to pair with multiple PowerCubes, and vice versa, to customize it to your needs. And surprisingly... the PowerRemote does NOT USE BATTERIES as Allocacoc cares about our environment.

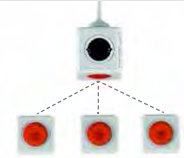
LED- status indicator



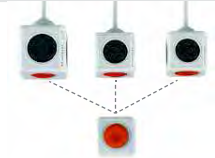
PowerCube Remote Extended (Type E)

mounting system

on/off



One PowerCube Remote can be controlled by multiple Remotes



One Remote can control multiple PowerCubes Remote

A unique feature of the PowerCube Remote is its pairing system: it is easy to pair different remotes with one PowerCube Remote, as well as the other way around. Just press the button on the PowerCube Remote for 5 seconds, and it will pair to the next PowerRemote that is clicked.

And if it ever happens that synchronisation is lost there is no need to worry: if you press the button twice all connected devices will be switched off.

Battery-free



The Remote does not use batteries, so you will never have to worry about replacing them.

Press by foot



The unique "Step-On" button on the PowerRemote can be pressed by foot in case both hands are occupied.

"Slicky-Pad" on the PowerRemote



- Attach to any smooth surface - making it difficult to lose
- Rinse off with a wet napkin to clean
- Retains its stickiness: reuse as many times as you want
- Does not leave any residue on the surface stuck onto

Mount the PowerRemote anywhere



vertically

horizontally

upside down

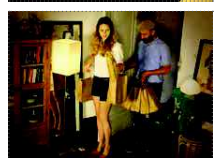
The PowerCube Remote can be used in many situations. On these pages you can find an overview of some situations that might occur:



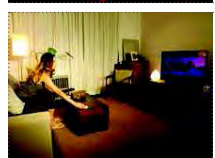
The kitchen
Switch on your coffee maker from your bedroom or any other location within your house, so that you only have to get out of bed when you start smelling your freshly made coffee.



At work
Plug in your desk lamp, laptop etc... As the PowerCube Remote can be used together with the mounting dock, you can also mount it on - or beneath - your desktop, eliminating the need to reach for a remote switch.



Arriving home
After grocery shopping you have both hands occupied... This is no problem though, as the PowerRemote's button can also be pressed by foot!



Watching TV
Electronics on standby can still consume a lot of power. However, you prefer not to walk to your TV every time to switch it on or off. Solution: Plug your TV into a PowerCube Remote, and control it by a PowerRemote you stick onto your coffee table.



Bedtime
No need to leave the warmth of your blanket to switch off the light: a push on the PowerRemote suffices.

The PowerCube Remote comes in different varieties, allowing you to create the solution that fits your needs the most. Beneath an overview of the main varieties:



PowerCube Remote Original	
Voltage	100-240V
Cord length	Direct plug
Sockets	4 + switch
PowerRemote included	In combo-packaging
PowerRemote range	25 m
Available socket types	Type A, B, D, E, F, G, I, A/I, N, O
Standard colour	Trolley Grey
Button colour	Queen's Orange

PowerCube Remote Extended	
Voltage	100-240V
Cord length	1.5m / 3m
Sockets	4 + switch
PowerRemote included	In combo-packaging
PowerRemote range	25 m
Mounting dock	included
CableFix	included
Available socket types	Type A, B, D, E, F, G, I, A/I, N, O
Standard colour	Trolley Grey
Button colour	Queen's Orange

PowerCube | Monitor |

Many devices still consume power when on standby, but this is very difficult to quantify.

This is why we developed the PowerCube | Monitor |. This product monitors the power use of appliances plugged into its sockets and presents the information on an e-ink display in a monetary value, making it easy for the user to understand. The counter displays the total consumption over the product's lifetime, and the consumption of a period of your choice, which can be reset by double-clicking the screen. By pressing for 8 seconds the total counter can be reset.

With a single push on the display, it is also possible to cut the power immediately to all connected devices, reducing the consumption to zero.

“Direct insight into your energy costs”



Features

Currency

All readings are shown in a monetary value, making it easy to interpret. The values are very detailed, with several decimal places, so you will see an immediate effect.

Current consumption

The current consumption is indicated like a car speedometer, making it easy to check at a glance how much you currently consume.

Subtotal consumption

Here you can see the consumption since the last reset (by double-clicking the display), enabling you to check your consumption per day, month or any other period of your choice.

Total consumption

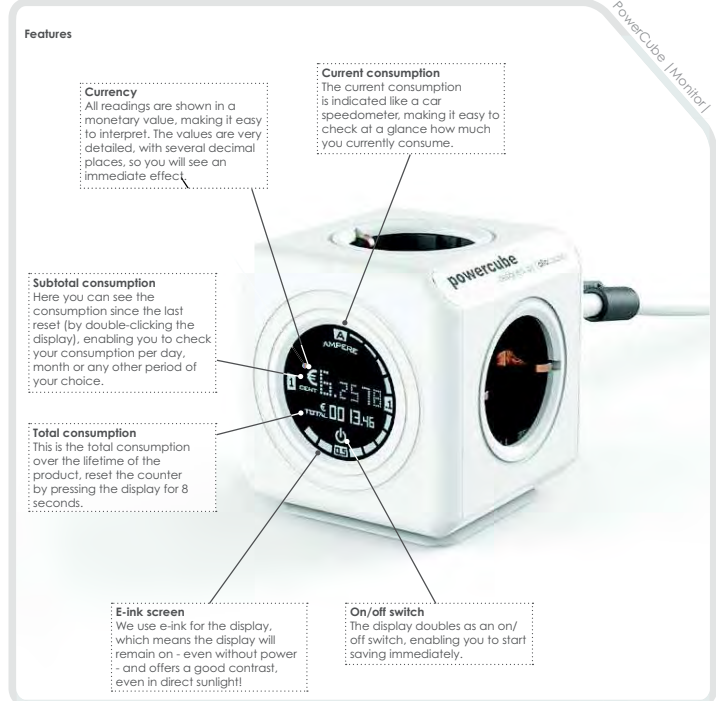
This is the total consumption over the lifetime of the product, reset the counter by pressing the display for 8 seconds.

E-ink screen

We use e-ink for the display, which means the display will remain on - even without power - and offers a good contrast, even in direct sunlight!

On/off switch

The display doubles as an on/off switch, enabling you to start saving immediately.



audioCube

audioCube

Most speakers are unidirectional: the best sound is directly in front of the device, and once you move to either side the sound quality drops significantly. We wanted to create a 360° experience, where the sound comes from the center of the party. This offers a much better sound experience, as the sound is truly all around and will interact with the room.

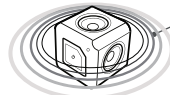
What is often neglected for portable speakers is the lower end of the sound spectrum. This is why we paid special attention to integrating a great bass, so that also the deepest tones are impeccable!

The audioCube also offers an integrated power circuit, what means that no bulky external power adapter is required: the audioCube is all you need!

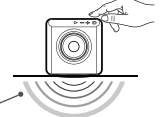
"No external adapter required!"



Features



A 360° experience
As the audioCube uses omnidirectional speakers, the sound will be all around, without any dead spots.



Internal battery
The audioCube [Portable] offers extra mobility, enabling you to also use the audioCube without a power outlet. Its internal batteries will give you an autonomy of up to 8 hours!

Controls

The audioCube is equipped with clearly indicated buttons, enabling you to access all basic controls (pause/play, volume, previous/next song and scan for pairing) with a single touch. There is also clear audio feedback for all controls.

Bass

The audioCube comes with a great bass, which also doubles as an on/off switch. There is also an integrated LED so you can see at a glance whether the product is on or off. The bass is further amplified by the surface it is placed onto.



IEC connector

At the back an IEC connector is provided, making it easy to attach a standard IEC cable you probably have laying around. And thanks to its integrated power circuit, no external adapter is required!

Audio jack

The audioCube uses a widely used audio input port, so besides bluetooth it is also possible to connect your mobile with a cable.

Bluetooth pairing

It is easy to pair the audioCube with all Bluetooth-enabled devices, no need for any cables!

PowerUSB | HUB |

Nowadays laptops tend to become smaller and lighter, often at the cost of available connectors. Also, mobile devices are getting more and more power hungry, offering high resolution screens and 24/7 connectivity, what means that they often do not even make it throughout the day.

To tackle these issues we designed the PowerUSB | HUB | and PowerBank | HUB |: These function as a USB hub, enabling you to connect several devices to one single USB port. The corners have integrated cable clamps, enabling you to neatly tuck away your cables without the risk of entangling them.

The PowerUSB | HUB | also features an IEC-connector at the rear, also enabling you use our travel plugs and plug it into a great variety of power outlets found throughout the world.

“a powered USB hub”



Features

Data transfer

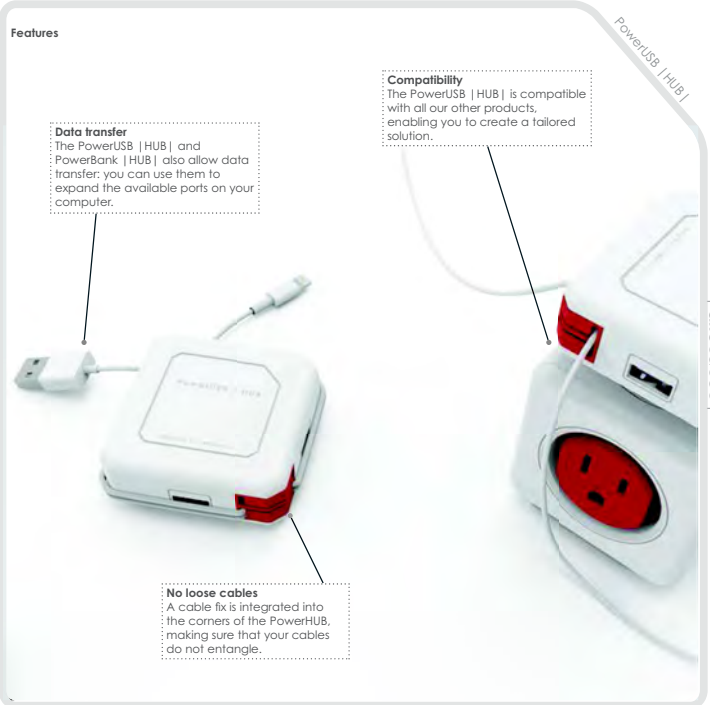
The PowerUSB | HUB | and PowerBank | HUB | also allow data transfer: you can use them to expand the available ports on your computer.

Compatibility

The PowerUSB | HUB | is compatible with all our other products, enabling you to create a tailored solution.

No loose cables

A cable fix is integrated into the corners of the PowerHUB, making sure that your cables do not entangle.



PowerBank | HUB |

The PowerBank | HUB | offers the same functionality as the PowerUSB | HUB |, but on top of that also features a built-in 4800 mAh battery, enabling you to fully recharge your mobile devices on the go. Because of its compact size, the PowerBank | HUB | is an ideal travel companion, ensuring that your electronics do not run out of power!

The battery is recharged when connected to a USB port, and recharges even faster when the PowerBank | HUB | is plugged into a power socket.

The charge level of the battery can be checked by pressing the button on the side of the product.

Battery indicator

The PowerBank | HUB | also features a battery indicator, so you can check how much charge is left.

Internal battery

An internal battery of 4800 mAh provides extra mobility, enabling you to charge your mobile devices on the go.

Worldwide adaptability

Both the PowerUSB | HUB | and PowerBank | HUB | can be plugged into a wall socket, enabling you to charge all your mobile devices even faster.

Features



Travel plugs

The IEC connector enables you to charge your mobile devices directly from a wall socket and enables you to adapt to multiple plug types.

IEC connector

At the back an IEC connector is provided, making it easy to connect a standard computer/printer cable of the length you prefer.

On/Off switch

Grace to its power switch it is easy to switch the PowerUSB | HUB | off: enabling you to stop charging or any data transfer between connected devices at once.



4 additional USB ports

These ports function for data transfer as well as for charging, offering a solution for the lack of USB ports on contemporary devices.

Power USB Cable

A recognizable problem: your visitors ask to charge their mobile or tablet, and you do not have the right cable around, as your mobile happens to have that different connector.

Charging cables with multiple connectors exist, however most often these use an extra cable for each separate connector, forcing you to carry extra cables you do not actually need. And if they are separate, the connectors you do not use end up in a drawer, and turn out to be impossible to find that one time you actually do need them.

With the Power USB Cable, these problems are over, as it caters to most modern connector types, and just exists of one slim cable. This means that you only have to carry the equivalent of your regular charging cable, and do not have to turn down the pretty lady or handsome boy asking you to charge his/her mobile!

Power USB Cable	
USB Cable	Charging and data transfer
Cable length	80cm/2.5 ft
Connectors	Apple Lightning, Micro USB and Mini USB
Standard colour	Wyoming White



Packaging

The packaging is very important, as it is the first impression a potential buyer gets of our products.

Therefore, we put as much care in the packaging design as into the design of our products. The packaging of most of our products is made of high quality polypropylene, a recyclable material known for its strength and qualitative appeal. Also, several parts of the packaging are semi-transparent or even cut-out. This will prevent it from being opened on the shelves, as customers may want to check the product and its colour before buying it. Also, as one of the sockets is open, it is very easy to check what socket version you are buying!



Extended USB (type A/I)

How many PowerCubes can be combined?

In theory, the PowerCube can be extended infinitely, as long as the devices you connect do not draw more than the rating specified on the product. However, we recommend you to attach no more than two PowerCubes to one mounted PowerCube.

Is the PowerCube safe to use with a power hungry device, like e.g. a microwave?

The PowerCube is as safe as any other power outlet, and built to last. Also, the PowerCube is fully grounded, and all sockets are child-proof.

What differentiates the PowerCube from other power strips?

What differentiates the PowerCube is its versatility: it can be mounted anywhere with the unique docking system. Besides this, the PowerCube's design also ensures that plugs cannot block one another. Furthermore, the PowerCube is a modular system: it is stackable and expandable enabling you to create a solution which tailors to your needs.

So we created a completely new user experience for an existing product, making it user-friendly and more versatile.

How long does it take to charge a device via the USB-output?

The USB ports provide 2.1A of power combined, quadruple the USB standard of 0.5A. As a result the charging time will be shorter than charging via a USB port on your computer. There is a built-in chip which detects how many devices are connected and adjusts the output according to this. So if only one device is connected, it will be able to use the full 2.1A output. If two are connected, they share this total output.

How come the PowerRemote does not use any batteries?

By pressing the button, enough kinetic energy is created to send a pulse to the PowerCube Remote.

Why are not all products available for all countries?

Many of our products feature power plugs and/or sockets, which vary greatly throughout the world. Even though these might look similar in appearance, the internal construction can be totally different: e.g. a grounding pin being male or female results in a totally different internal construction.

Do you have any vacancies?

Chances are we actually do! You are most welcome to mail your cv to jobs@allocacoc.com

How do you protect your products against copycats?

At Allocacoc, we are designers at heart: we come up with clever solutions to problems, resulting in original products. Of course, this does not go unnoticed: as our products gain popularity, "remarkably similar" products are starting to appear on the market. We actually consider this as a honour though: being copied is the greatest recognition a product can get. This also confirms that we live up to our name, and really do set a different standard.

Of course we also take action, focusing on the following aspects:

- Protection of our intellectual property rights on internal construction, design and utility
- Never stopping to innovate: as copycats are copying a product, we are already working on its "version 2.0".
- An extensive focus on build quality and product safety
- Thinking through all details and keeping the complete user experience of our products in mind, from the unboxing to the installation and -extensive- usage.
- A good pricing strategy: Even before we start designing a product, we already have a target price in mind. This enables us to make crucial decisions throughout the process, and ensures that all products we design will be affordable to the end consumer. The fact that we do not charge any "design fees" or other hidden costs often also creates the unique situation where the copy is more expensive than the original.

By focusing on these key points we are confident we can maintain the lead, and continue to set a different standard.

Where can I find more information on the products of Allocacoc?

You are welcome to visit our website at www.allocacoc.com. On this website, you can find additional information as well as the latest news on our company and products. Besides this website, we also post regular updates on social media like Facebook and Twitter, you are most welcome to follow us there too!

We hope we have made you as enthusiastic about our products as we are, and stay with us for more products to come!

For more information, you are welcome to visit us at www.allocacoc.com. If you have more questions or would like us to assist you in any other way, please mail us at info@allocacoc.com, or just drop by at one of our offices, we will be glad to show you around!