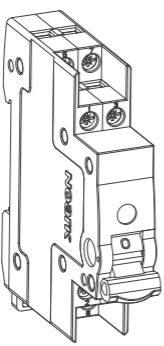


## Ex9BT2



Change-over switch  
 Přepínač  
 Prepínač  
 Przełącznik modułowy  
 Mâner de comutare  
 Umschalter  
 Interrupteur  
 Переключатель  
 Превключвател  
 Izborna sklopka  
 Perjungėjas

**NOARK**

1

## Ex9BT2

Mounting instructions  
 Montážní návod  
 Montážne inštrukcie  
 Instrukcja montazu  
 Instrucțiuni de asamblare  
 Montageanweisung  
 Instructions de montage  
 Инструкция по монтажу  
 Monteringsanvisning  
 Istruzioni di montaggio  
 Instrucciones de montaje  
 Összeszerelési útmutató

Asennusohjeita  
 Montage-instructies  
 Instruções de montagem  
 Navodila za montažo  
 Οδηγίες Εγκατάστασης  
 Инструкции за инсталиране  
 Monteringsvejledningen  
 Montažu upute  
 Surinkimo instrukcijos  
 Instalēšanas instrukcijas  
 Скупштина упутство  
 Paigaldusjuhendid

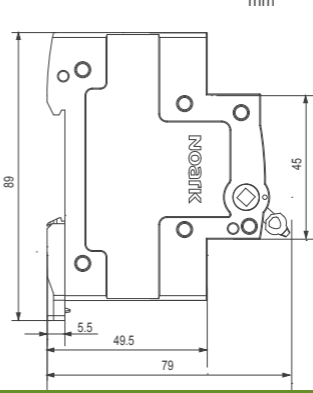
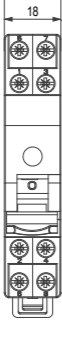
2

## Ex9BT2

Caution: Installation by electricians only  
 Varování: Montáž pouze osobou s elektrotech. kvalifikací  
 Varovanie: Montáž iba osobou s elektrotech. kvalifikáciou  
 Uwaga: Montaż tylko przez uprawnionych instalatorów  
 Atenție: Instalare numai de catre electricieni  
 Vorsicht: Montagenur durch Elektrofachkräfte  
 Attention: Montage uniquement par un électricien  
 Осторожно: Монтаж только электрика

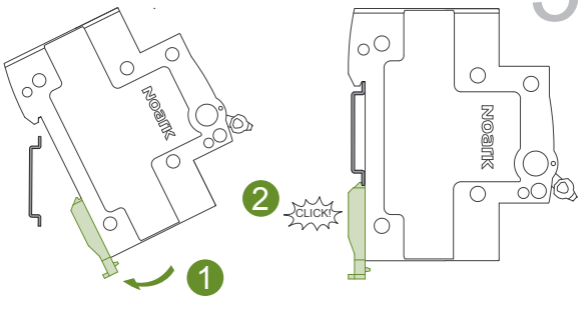
3

## Ex9BT2



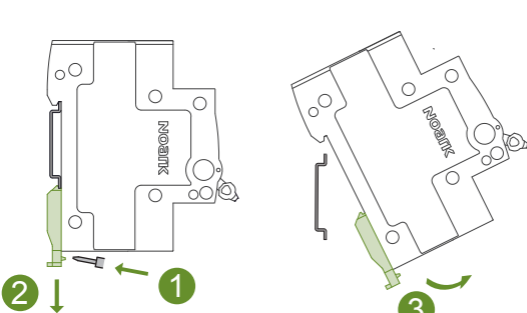
4

## Ex9BT2



5

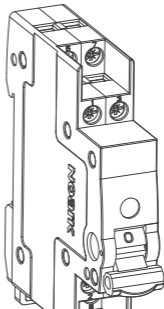
## Ex9BT2



6

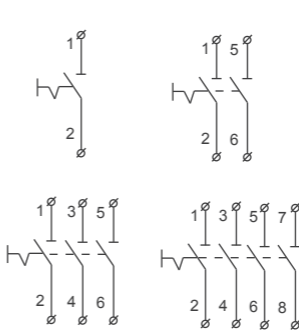
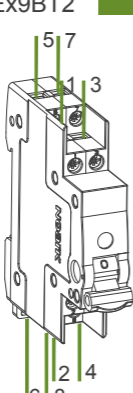
## Ex9BT2

	1-10mm <sup>2</sup>
	1.2-1.5Nm



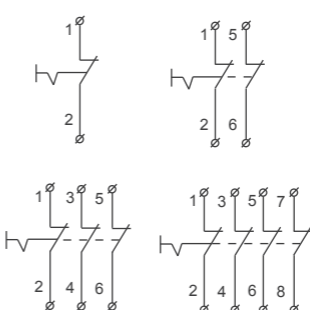
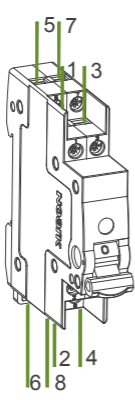
7

## Ex9BT2



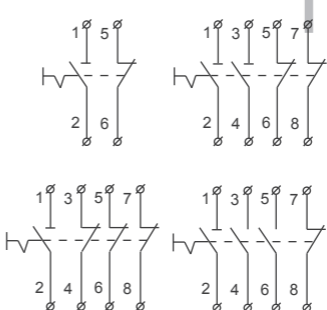
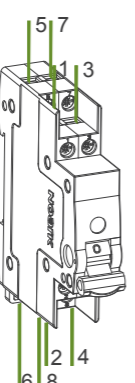
8

Ex9BT2



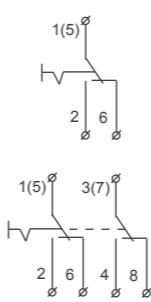
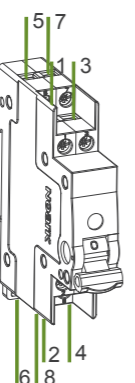
9

Ex9BT2



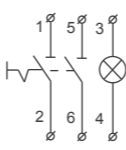
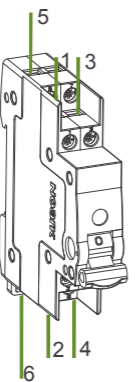
10

Ex9BT2



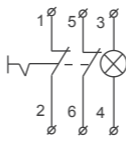
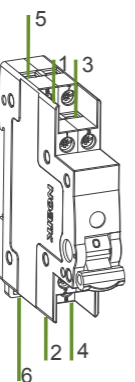
11

Ex9BT2



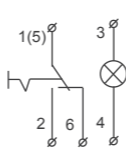
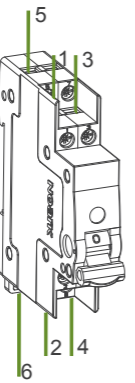
12

Ex9BT2



13

Ex9BT2



14

**NOARK**



Printed with environment-friendly paper

Copyright Noark. All Rights Reserved

www.noark-electric.eu