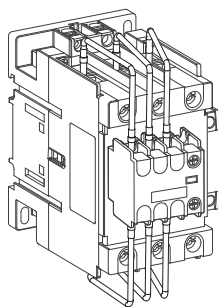


Capacitor Contactor

Ex9CC50~65/Ex9CC80~100 Capacitor Contactor



Capacitor contactor
 Stykač pro spínání kapacitních zátěží
 Stykač pre spínanie kapacitnej záťaže
 Stycznik do baterii kondensatorów
 Contactor capacitive
 Kondensatorschütz
 Contacteur pour condensateur
 Конденсаторный переключатель
 Капацитивен контактор
 Kontaktor za kompenzaciju
 Kondenzátor mágneskapcsoló
 Kondensatoriniai kontaktoriai

IEC/EN 60947-4-1

Mounting instructions

Montážní návod

Montážne inštrukcie

Instrukcija montazu

Instrucțiuni de asamblare

Montageanweisung

Instructions de montage

Инструкция по монтажу

Monteringsanvisning

Istruzioni di montaggio

Instrucciones de montaje

Ősszeszerelési útmutató

Asennusohjeita

Montage-instructies

Instruções de montagem

Navodila za montažo

Οδηγίες εγκατάστασης

Инструкции за инсталиране

Monteringsvejledningen

Montažu upute

Surinkimo instrukcijos

Instalēšanas instrukcijas

Скупштина улутство

Paigaldusjuhendid

Caution: Installation by electricians only

Varování: Montáž pouze osobou s elektrotech. kvalifikací

Varovanie: Montáž iba osobou s elektrotech. kvalifikáciou

Uwaga: Montaż tylko przezu prawnionych instalatorów

Atenție: Instalare numai de către electricieni

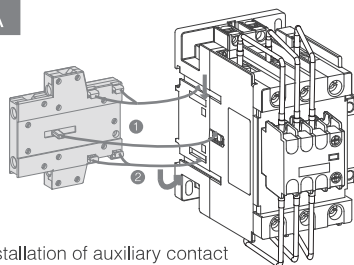
Vorsicht: Montagenur durch Elektrofachkräfte

Attention: Montage uniquement par un électricien

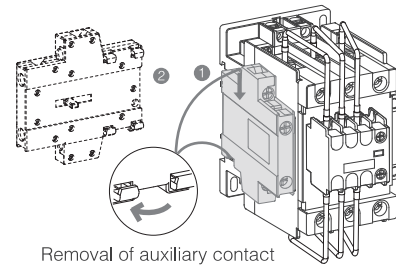
Осторожно: Монтаж только электрика

NOARK

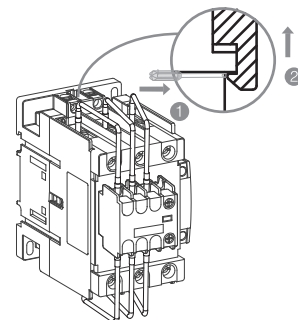
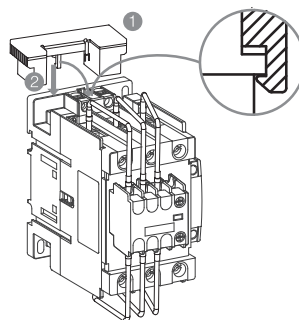
A



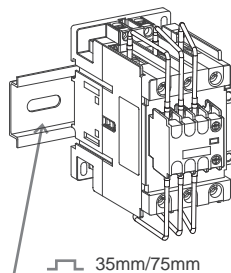
Installation of auxiliary contact



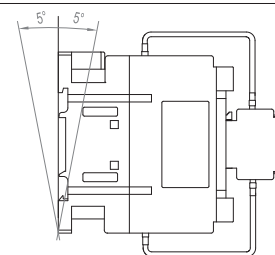
Removal of auxiliary contact



B

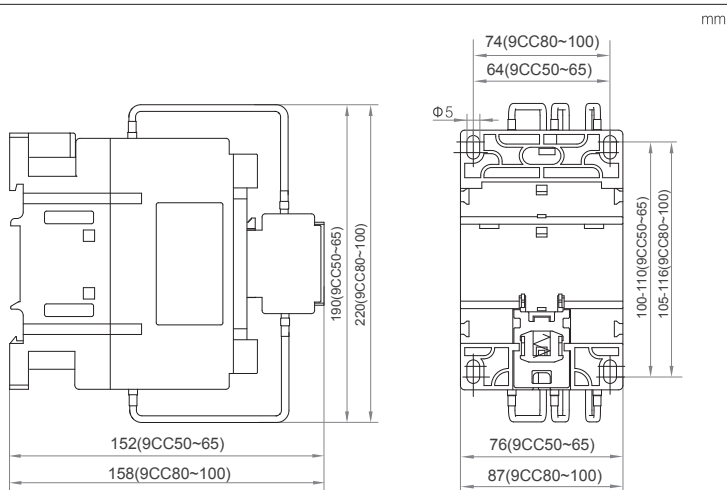


35mm/75mm

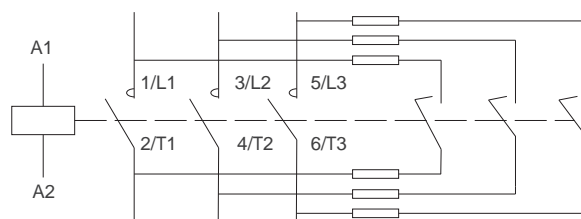


Encline not exceed ±5°

C



D



E

Storage / C	-60~+80
Working / C	-20~+40
Permission / C	-40~+60 for working at Uc

F

Type	Code	A	B	C	D	E	F	G	H	I	J	K	M
Ex9CC50~65	M8	6N·m	2.5~25	2.5~25	2.5~25	2.5~25	2.5~25	2.5~25	2.5~25	2.5~25	2.5~25		15
Ex9CC80~100	M10	9N·m	4~50	4~50	4~50	4~50	4~50	4~50	4~50	4~50	4~50		17

