

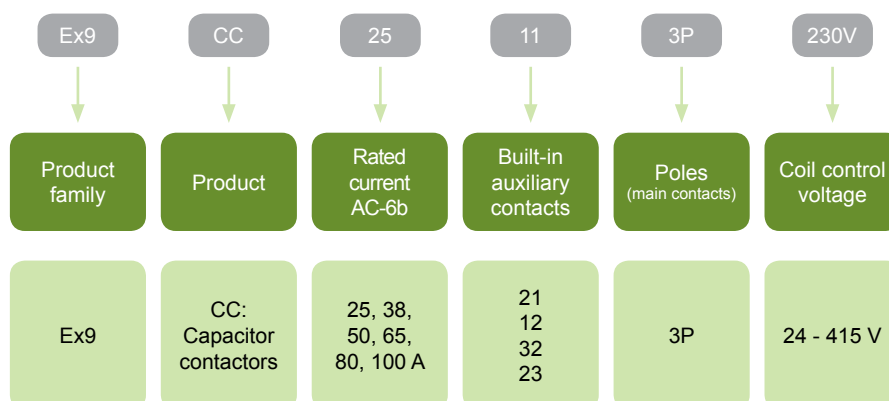
Capacitor contactors Ex9CC



- Contactors for switching of capacity loads, especially power factor compensation capacitors
- Tested according to IEC / EN 60947-4-1
- 3-pole versions
- Rated current AC-6b up to 100 A
- Coil control voltage 24 — 415 V AC
- Mounting onto DIN rail or onto panel
- Variants for compensation up to 60 kvar at 400 V

Capacitor contactors Ex9CC are used mainly for switching of power factor correction blocks. These types of contactors are fitted and delivered with special front mounted block of series resistors which ensures early making of auxiliary poles and connect the capacitor to the network via the set of resistors, when the coil is energized. The contactor with this current suppression block can effectively reduce the current impact of the capacitors and operational overvoltage. Utilization category of these contactors is AC-6b.

Type Key



Certification marks



Capacitor contactors Ex9CC

Frame sizes



Frame size 38
Rated currents 25, 38 A
Rated power 16, 25 kvar at 400 V



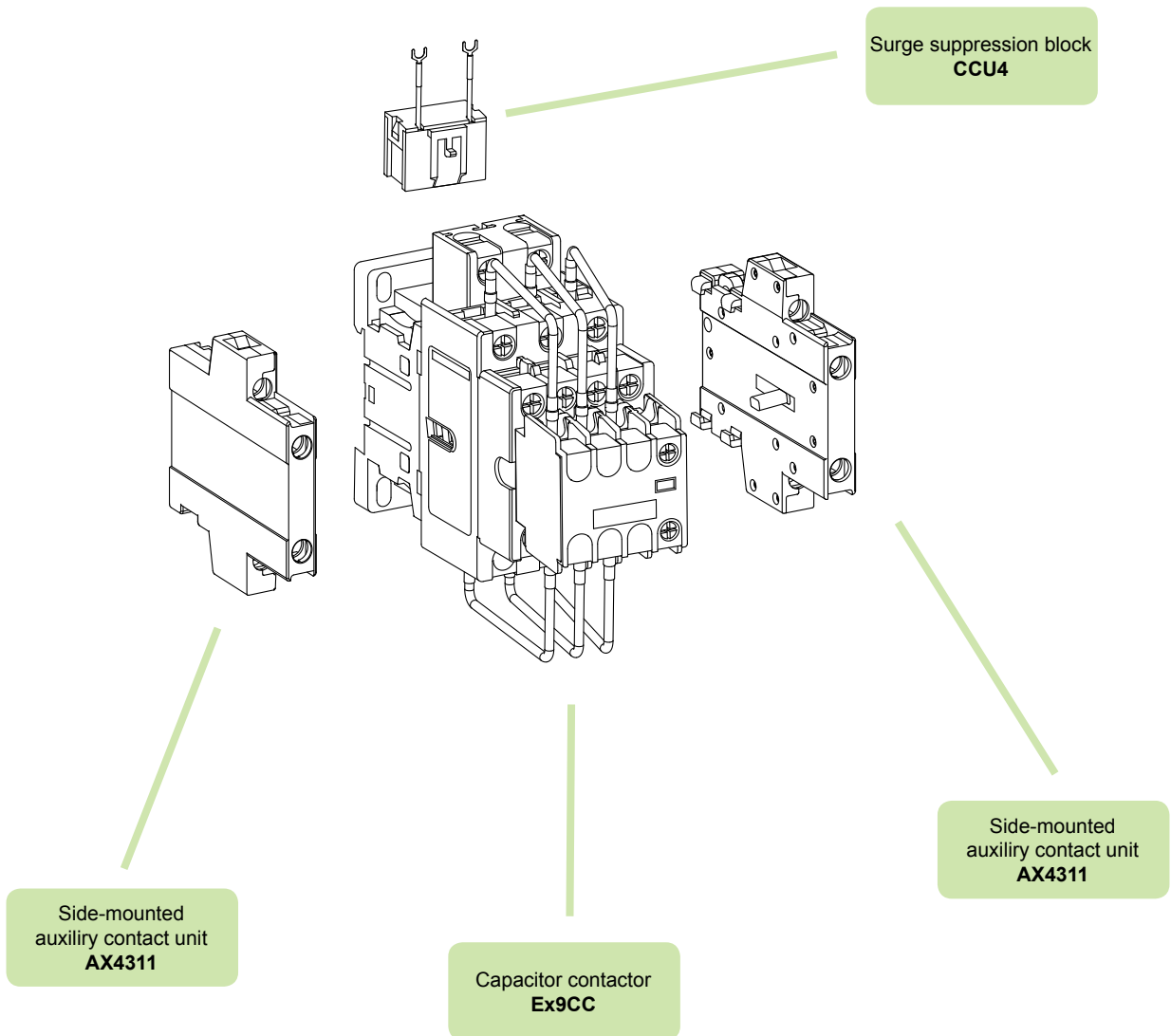
Frame size 65
Rated currents 50, 65 A
Rated power 30, 40 kvar at 400 V



Frame size 100
Rated currents 80, 100 A
Rated power 50, 60 kvar at 400 V

Capacitor contactors Ex9CC

Accessories



Auxiliary contacts AX431

Surge suppression block CCU4

Capacitor contactors Ex9CC

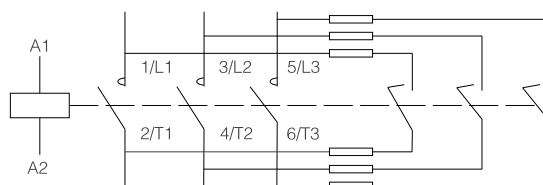
Rated current 25 A AC-6b, 3-pole

- For compensation up to 16 kvar at 400 V AC
- Mounting onto device DIN rail or onto panel
- Side-mounted auxiliary contacts AX43 can be used



Control voltage	AC-6b current	Frame size	Auxiliary contacts	Article No.	Type	Packing
415 V AC	25 A	38	1 NO + 2 NC	104203	Ex9CC25 12 3P 415V	1/14
400 V AC	25 A	38	1 NO + 2 NC	104202	Ex9CC25 12 3P 400V	1/14
380 V AC	25 A	38	1 NO + 2 NC	104201	Ex9CC25 12 3P 380V	1/14
240 V AC	25 A	38	1 NO + 2 NC	104198	Ex9CC25 12 3P 240V	1/14
230 V AC	25 A	38	1 NO + 2 NC	104197	Ex9CC25 12 3P 230V	1/14
220 V AC	25 A	38	1 NO + 2 NC	104196	Ex9CC25 12 3P 220V	1/14
127 V AC	25 A	38	1 NO + 2 NC	104195	Ex9CC25 12 3P 127V	1/14
110 V AC	25 A	38	1 NO + 2 NC	104194	Ex9CC25 12 3P 110V	1/14
48 V AC	25 A	38	1 NO + 2 NC	104205	Ex9CC25 12 3P 48V	1/14
42 V AC	25 A	38	1 NO + 2 NC	104204	Ex9CC25 12 3P 42V	1/14
36 V AC	25 A	38	1 NO + 2 NC	104200	Ex9CC25 12 3P 36V	1/14
24 V AC	25 A	38	1 NO + 2 NC	104199	Ex9CC25 12 3P 24V	1/14
415 V AC	25 A	38	2 NO + 1 NC	104215	Ex9CC25 21 3P 415V	1/14
400 V AC	25 A	38	2 NO + 1 NC	104214	Ex9CC25 21 3P 400V	1/14
380 V AC	25 A	38	2 NO + 1 NC	104213	Ex9CC25 21 3P 380V	1/14
240 V AC	25 A	38	2 NO + 1 NC	104210	Ex9CC25 21 3P 240V	1/14
230 V AC	25 A	38	2 NO + 1 NC	104209	Ex9CC25 21 3P 230V	1/14
220 V AC	25 A	38	2 NO + 1 NC	104208	Ex9CC25 21 3P 220V	1/14
127 V AC	25 A	38	2 NO + 1 NC	104207	Ex9CC25 21 3P 127V	1/14
110 V AC	25 A	38	2 NO + 1 NC	104206	Ex9CC25 21 3P 110V	1/14
48 V AC	25 A	38	2 NO + 1 NC	104217	Ex9CC25 21 3P 48V	1/14
42 V AC	25 A	38	2 NO + 1 NC	104216	Ex9CC25 21 3P 42V	1/14
36 V AC	25 A	38	2 NO + 1 NC	104212	Ex9CC25 21 3P 36V	1/14
24 V AC	25 A	38	2 NO + 1 NC	104211	Ex9CC25 21 3P 24V	1/14
415 V AC	25 A	38	2 NO + 3 NC	104227	Ex9CC25 23 3P 415V	1/14
400 V AC	25 A	38	2 NO + 3 NC	104226	Ex9CC25 23 3P 400V	1/14
380 V AC	25 A	38	2 NO + 3 NC	104225	Ex9CC25 23 3P 380V	1/14
240 V AC	25 A	38	2 NO + 3 NC	104222	Ex9CC25 23 3P 240V	1/14
230 V AC	25 A	38	2 NO + 3 NC	104221	Ex9CC25 23 3P 230V	1/14
220 V AC	25 A	38	2 NO + 3 NC	104220	Ex9CC25 23 3P 220V	1/14
127 V AC	25 A	38	2 NO + 3 NC	104219	Ex9CC25 23 3P 127V	1/14
110 V AC	25 A	38	2 NO + 3 NC	104218	Ex9CC25 23 3P 110V	1/14
48 V AC	25 A	38	2 NO + 3 NC	104229	Ex9CC25 23 3P 48V	1/14
42 V AC	25 A	38	2 NO + 3 NC	104228	Ex9CC25 23 3P 42V	1/14
36 V AC	25 A	38	2 NO + 3 NC	104224	Ex9CC25 23 3P 36V	1/14
24 V AC	25 A	38	2 NO + 3 NC	104223	Ex9CC25 23 3P 24V	1/14
415 V AC	25 A	38	3 NO + 2 NC	104239	Ex9CC25 32 3P 415V	1/14
400 V AC	25 A	38	3 NO + 2 NC	104238	Ex9CC25 32 3P 400V	1/14
380 V AC	25 A	38	3 NO + 2 NC	104237	Ex9CC25 32 3P 380V	1/14
240 V AC	25 A	38	3 NO + 2 NC	104234	Ex9CC25 32 3P 240V	1/14
230 V AC	25 A	38	3 NO + 2 NC	104233	Ex9CC25 32 3P 230V	1/14
220 V AC	25 A	38	3 NO + 2 NC	104232	Ex9CC25 32 3P 220V	1/14
127 V AC	25 A	38	3 NO + 2 NC	104231	Ex9CC25 32 3P 127V	1/14
110 V AC	25 A	38	3 NO + 2 NC	104230	Ex9CC25 32 3P 110V	1/14
48 V AC	25 A	38	3 NO + 2 NC	104241	Ex9CC25 32 3P 48V	1/14
42 V AC	25 A	38	3 NO + 2 NC	104240	Ex9CC25 32 3P 42V	1/14
36 V AC	25 A	38	3 NO + 2 NC	104236	Ex9CC25 32 3P 36V	1/14
24 V AC	25 A	38	3 NO + 2 NC	104235	Ex9CC25 32 3P 24V	1/14

Main terminals wiring diagram



Capacitor contactors Ex9CC

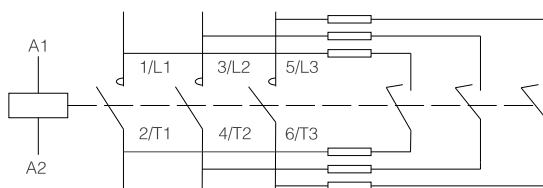
Rated current 38 A AC-6b, 3-pole

- For compensation up to 25 kvar at 400 V AC
- Mounting onto device DIN rail or onto panel
- Side-mounted auxiliary contacts AX43 can be used



Control voltage	AC-6b current	Frame size	Auxiliary contacts	Article No.	Type	Packing
415 V AC	38 A	38	1 NO + 2 NC	104251	Ex9CC38 12 3P 415V	1/14
400 V AC	38 A	38	1 NO + 2 NC	104250	Ex9CC38 12 3P 400V	1/14
380 V AC	38 A	38	1 NO + 2 NC	104249	Ex9CC38 12 3P 380V	1/14
240 V AC	38 A	38	1 NO + 2 NC	104246	Ex9CC38 12 3P 240V	1/14
230 V AC	38 A	38	1 NO + 2 NC	104245	Ex9CC38 12 3P 230V	1/14
220 V AC	38 A	38	1 NO + 2 NC	104244	Ex9CC38 12 3P 220V	1/14
127 V AC	38 A	38	1 NO + 2 NC	104243	Ex9CC38 12 3P 127V	1/14
110 V AC	38 A	38	1 NO + 2 NC	104242	Ex9CC38 12 3P 110V	1/14
48 V AC	38 A	38	1 NO + 2 NC	104253	Ex9CC38 12 3P 48V	1/14
42 V AC	38 A	38	1 NO + 2 NC	104252	Ex9CC38 12 3P 42V	1/14
36 V AC	38 A	38	1 NO + 2 NC	104248	Ex9CC38 12 3P 36V	1/14
24 V AC	38 A	38	1 NO + 2 NC	104247	Ex9CC38 12 3P 24V	1/14
415 V AC	38 A	38	2 NO + 1 NC	104263	Ex9CC38 21 3P 415V	1/14
400 V AC	38 A	38	2 NO + 1 NC	104262	Ex9CC38 21 3P 400V	1/14
380 V AC	38 A	38	2 NO + 1 NC	104261	Ex9CC38 21 3P 380V	1/14
240 V AC	38 A	38	2 NO + 1 NC	104258	Ex9CC38 21 3P 240V	1/14
230 V AC	38 A	38	2 NO + 1 NC	104257	Ex9CC38 21 3P 230V	1/14
220 V AC	38 A	38	2 NO + 1 NC	104256	Ex9CC38 21 3P 220V	1/14
127 V AC	38 A	38	2 NO + 1 NC	104255	Ex9CC38 21 3P 127V	1/14
110 V AC	38 A	38	2 NO + 1 NC	104254	Ex9CC38 21 3P 110V	1/14
48 V AC	38 A	38	2 NO + 1 NC	104265	Ex9CC38 21 3P 48V	1/14
42 V AC	38 A	38	2 NO + 1 NC	104264	Ex9CC38 21 3P 42V	1/14
36 V AC	38 A	38	2 NO + 1 NC	104260	Ex9CC38 21 3P 36V	1/14
24 V AC	38 A	38	2 NO + 1 NC	104259	Ex9CC38 21 3P 24V	1/14
415 V AC	38 A	38	2 NO + 3 NC	104275	Ex9CC38 23 3P 415V	1/14
400 V AC	38 A	38	2 NO + 3 NC	104274	Ex9CC38 23 3P 400V	1/14
380 V AC	38 A	38	2 NO + 3 NC	104273	Ex9CC38 23 3P 380V	1/14
240 V AC	38 A	38	2 NO + 3 NC	104270	Ex9CC38 23 3P 240V	1/14
230 V AC	38 A	38	2 NO + 3 NC	104269	Ex9CC38 23 3P 230V	1/14
220 V AC	38 A	38	2 NO + 3 NC	104268	Ex9CC38 23 3P 220V	1/14
127 V AC	38 A	38	2 NO + 3 NC	104267	Ex9CC38 23 3P 127V	1/14
110 V AC	38 A	38	2 NO + 3 NC	104266	Ex9CC38 23 3P 110V	1/14
48 V AC	38 A	38	2 NO + 3 NC	104277	Ex9CC38 23 3P 48V	1/14
42 V AC	38 A	38	2 NO + 3 NC	104276	Ex9CC38 23 3P 42V	1/14
36 V AC	38 A	38	2 NO + 3 NC	104272	Ex9CC38 23 3P 36V	1/14
24 V AC	38 A	38	2 NO + 3 NC	104271	Ex9CC38 23 3P 24V	1/14
415 V AC	38 A	38	3 NO + 2 NC	104287	Ex9CC38 32 3P 415V	1/14
400 V AC	38 A	38	3 NO + 2 NC	104286	Ex9CC38 32 3P 400V	1/14
380 V AC	38 A	38	3 NO + 2 NC	104285	Ex9CC38 32 3P 380V	1/14
240 V AC	38 A	38	3 NO + 2 NC	104282	Ex9CC38 32 3P 240V	1/14
230 V AC	38 A	38	3 NO + 2 NC	104281	Ex9CC38 32 3P 230V	1/14
220 V AC	38 A	38	3 NO + 2 NC	104280	Ex9CC38 32 3P 220V	1/14
127 V AC	38 A	38	3 NO + 2 NC	104279	Ex9CC38 32 3P 127V	1/14
110 V AC	38 A	38	3 NO + 2 NC	104278	Ex9CC38 32 3P 110V	1/14
48 V AC	38 A	38	3 NO + 2 NC	104289	Ex9CC38 32 3P 48V	1/14
42 V AC	38 A	38	3 NO + 2 NC	104288	Ex9CC38 32 3P 42V	1/14
36 V AC	38 A	38	3 NO + 2 NC	104284	Ex9CC38 32 3P 36V	1/14
24 V AC	38 A	38	3 NO + 2 NC	104283	Ex9CC38 32 3P 24V	1/14

Main terminals wiring diagram



Capacitor contactors Ex9CC

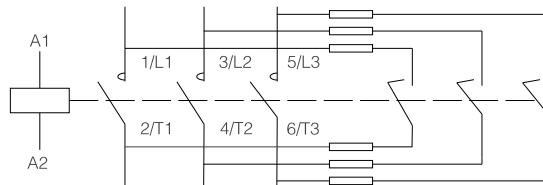
Rated current 50 A AC-6b, 3-pole

- For compensation up to 30 kvar at 400 V AC
- Mounting onto device DIN rail or onto panel
- Side-mounted auxiliary contacts AX43 can be used



Control voltage	AC-6b current	Frame size	Auxiliary contacts	Article No.	Type	Packing
415 V AC	50 A	65	1 NO + 2 NC	104299	Ex9CC50 12 3P 415V	1/6
400 V AC	50 A	65	1 NO + 2 NC	104298	Ex9CC50 12 3P 400V	1/6
380 V AC	50 A	65	1 NO + 2 NC	104297	Ex9CC50 12 3P 380V	1/6
240 V AC	50 A	65	1 NO + 2 NC	104294	Ex9CC50 12 3P 240V	1/6
230 V AC	50 A	65	1 NO + 2 NC	104293	Ex9CC50 12 3P 230V	1/6
220 V AC	50 A	65	1 NO + 2 NC	104292	Ex9CC50 12 3P 220V	1/6
127 V AC	50 A	65	1 NO + 2 NC	104291	Ex9CC50 12 3P 127V	1/6
110 V AC	50 A	65	1 NO + 2 NC	104290	Ex9CC50 12 3P 110V	1/6
48 V AC	50 A	65	1 NO + 2 NC	104301	Ex9CC50 12 3P 48V	1/6
42 V AC	50 A	65	1 NO + 2 NC	104300	Ex9CC50 12 3P 42V	1/6
36 V AC	50 A	65	1 NO + 2 NC	104296	Ex9CC50 12 3P 36V	1/6
24 V AC	50 A	65	1 NO + 2 NC	104295	Ex9CC50 12 3P 24V	1/6
415 V AC	50 A	65	2 NO + 1 NC	104311	Ex9CC50 21 3P 415V	1/6
400 V AC	50 A	65	2 NO + 1 NC	104310	Ex9CC50 21 3P 400V	1/6
380 V AC	50 A	65	2 NO + 1 NC	104309	Ex9CC50 21 3P 380V	1/6
240 V AC	50 A	65	2 NO + 1 NC	104306	Ex9CC50 21 3P 240V	1/6
230 V AC	50 A	65	2 NO + 1 NC	104305	Ex9CC50 21 3P 230V	1/6
220 V AC	50 A	65	2 NO + 1 NC	104304	Ex9CC50 21 3P 220V	1/6
127 V AC	50 A	65	2 NO + 1 NC	104303	Ex9CC50 21 3P 127V	1/6
110 V AC	50 A	65	2 NO + 1 NC	104302	Ex9CC50 21 3P 110V	1/6
48 V AC	50 A	65	2 NO + 1 NC	104313	Ex9CC50 21 3P 48V	1/6
42 V AC	50 A	65	2 NO + 1 NC	104312	Ex9CC50 21 3P 42V	1/6
36 V AC	50 A	65	2 NO + 1 NC	104308	Ex9CC50 21 3P 36V	1/6
24 V AC	50 A	65	2 NO + 1 NC	104307	Ex9CC50 21 3P 24V	1/6

Main terminals wiring diagram



Capacitor contactors Ex9CC

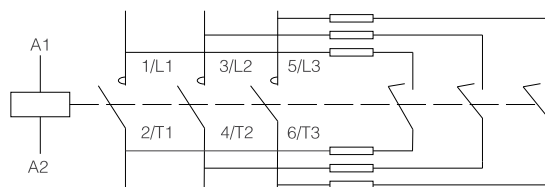
Rated current 65 A AC-6b, 3-pole

- For compensation up to 40 kvar at 400 V AC
- Mounting onto device DIN rail or onto panel
- Side-mounted auxiliary contacts AX43 can be used



Control voltage	AC-6b current	Frame size	Auxiliary contacts	Article No.	Type	Packing
415 V AC	65 A	65	1 NO + 2 NC	104323	Ex9CC65 12 3P 415V	1/6
400 V AC	65 A	65	1 NO + 2 NC	104322	Ex9CC65 12 3P 400V	1/6
380 V AC	65 A	65	1 NO + 2 NC	104321	Ex9CC65 12 3P 380V	1/6
240 V AC	65 A	65	1 NO + 2 NC	104318	Ex9CC65 12 3P 240V	1/6
230 V AC	65 A	65	1 NO + 2 NC	104317	Ex9CC65 12 3P 230V	1/6
220 V AC	65 A	65	1 NO + 2 NC	104316	Ex9CC65 12 3P 220V	1/6
127 V AC	65 A	65	1 NO + 2 NC	104315	Ex9CC65 12 3P 127V	1/6
110 V AC	65 A	65	1 NO + 2 NC	104314	Ex9CC65 12 3P 110V	1/6
48 V AC	65 A	65	1 NO + 2 NC	104325	Ex9CC65 12 3P 48V	1/6
42 V AC	65 A	65	1 NO + 2 NC	104324	Ex9CC65 12 3P 42V	1/6
36 V AC	65 A	65	1 NO + 2 NC	104320	Ex9CC65 12 3P 36V	1/6
24 V AC	65 A	65	1 NO + 2 NC	104319	Ex9CC65 12 3P 24V	1/6
415 V AC	65 A	65	2 NO + 1 NC	104335	Ex9CC65 21 3P 415V	1/6
400 V AC	65 A	65	2 NO + 1 NC	104334	Ex9CC65 21 3P 400V	1/6
380 V AC	65 A	65	2 NO + 1 NC	104333	Ex9CC65 21 3P 380V	1/6
240 V AC	65 A	65	2 NO + 1 NC	104330	Ex9CC65 21 3P 240V	1/6
230 V AC	65 A	65	2 NO + 1 NC	104329	Ex9CC65 21 3P 230V	1/6
220 V AC	65 A	65	2 NO + 1 NC	104328	Ex9CC65 21 3P 220V	1/6
127 V AC	65 A	65	2 NO + 1 NC	104327	Ex9CC65 21 3P 127V	1/6
110 V AC	65 A	65	2 NO + 1 NC	104326	Ex9CC65 21 3P 110V	1/6
48 V AC	65 A	65	2 NO + 1 NC	104337	Ex9CC65 21 3P 48V	1/6
42 V AC	65 A	65	2 NO + 1 NC	104336	Ex9CC65 21 3P 42V	1/6
36 V AC	65 A	65	2 NO + 1 NC	104332	Ex9CC65 21 3P 36V	1/6
24 V AC	65 A	65	2 NO + 1 NC	104331	Ex9CC65 21 3P 24V	1/6

Main terminals wiring diagram



Capacitor contactors Ex9CC

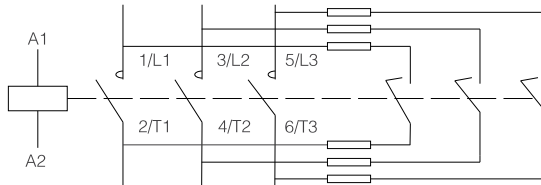
Rated current 80 A AC-6b, 3-pole

- For compensation up to 50 kvar at 400 V AC
- Mounting onto device DIN rail or onto panel
- Side-mounted auxiliary contacts AX43 can be used



Control voltage	AC-6b current	Frame size	Auxiliary contacts	Article No.	Type	Packing
415 V AC	80 A	100	1 NO + 2 NC	104347	Ex9CC80 12 3P 415V	1/6
400 V AC	80 A	100	1 NO + 2 NC	104346	Ex9CC80 12 3P 400V	1/6
380 V AC	80 A	100	1 NO + 2 NC	104345	Ex9CC80 12 3P 380V	1/6
240 V AC	80 A	100	1 NO + 2 NC	104342	Ex9CC80 12 3P 240V	1/6
230 V AC	80 A	100	1 NO + 2 NC	104341	Ex9CC80 12 3P 230V	1/6
220 V AC	80 A	100	1 NO + 2 NC	104340	Ex9CC80 12 3P 220V	1/6
127 V AC	80 A	100	1 NO + 2 NC	104339	Ex9CC80 12 3P 127V	1/6
110 V AC	80 A	100	1 NO + 2 NC	104338	Ex9CC80 12 3P 110V	1/6
48 V AC	80 A	100	1 NO + 2 NC	104349	Ex9CC80 12 3P 48V	1/6
42 V AC	80 A	100	1 NO + 2 NC	104348	Ex9CC80 12 3P 42V	1/6
36 V AC	80 A	100	1 NO + 2 NC	104344	Ex9CC80 12 3P 36V	1/6
24 V AC	80 A	100	1 NO + 2 NC	104343	Ex9CC80 12 3P 24V	1/6
415 V AC	80 A	100	2 NO + 1 NC	104359	Ex9CC80 21 3P 415V	1/6
400 V AC	80 A	100	2 NO + 1 NC	104358	Ex9CC80 21 3P 400V	1/6
380 V AC	80 A	100	2 NO + 1 NC	104357	Ex9CC80 21 3P 380V	1/6
240 V AC	80 A	100	2 NO + 1 NC	104354	Ex9CC80 21 3P 240V	1/6
230 V AC	80 A	100	2 NO + 1 NC	104353	Ex9CC80 21 3P 230V	1/6
220 V AC	80 A	100	2 NO + 1 NC	104352	Ex9CC80 21 3P 220V	1/6
127 V AC	80 A	100	2 NO + 1 NC	104351	Ex9CC80 21 3P 127V	1/6
110 V AC	80 A	100	2 NO + 1 NC	104350	Ex9CC80 21 3P 110V	1/6
48 V AC	80 A	100	2 NO + 1 NC	104361	Ex9CC80 21 3P 48V	1/6
42 V AC	80 A	100	2 NO + 1 NC	104360	Ex9CC80 21 3P 42V	1/6
36 V AC	80 A	100	2 NO + 1 NC	104356	Ex9CC80 21 3P 36V	1/6
24 V AC	80 A	100	2 NO + 1 NC	104355	Ex9CC80 21 3P 24V	1/6

Main terminals wiring diagram



Capacitor contactors Ex9CC

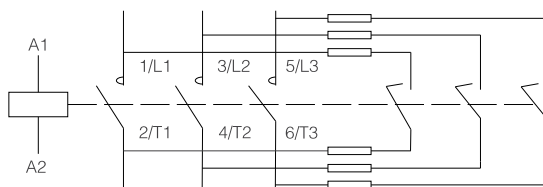
Rated current 100 A AC-6b, 3-pole

- For compensation up to 60 kvar at 400 V AC
- Mounting onto device DIN rail or onto panel
- Side-mounted auxiliary contacts AX43 can be used



Control voltage	AC-6b current	Frame size	Auxiliary contacts	Article No.	Type	Packing
415 V AC	100 A	100	1 NO + 2 NC	104371	Ex9CC100 12 3P 415V	1/6
400 V AC	100 A	100	1 NO + 2 NC	104370	Ex9CC100 12 3P 400V	1/6
380 V AC	100 A	100	1 NO + 2 NC	104369	Ex9CC100 12 3P 380V	1/6
240 V AC	100 A	100	1 NO + 2 NC	104366	Ex9CC100 12 3P 240V	1/6
230 V AC	100 A	100	1 NO + 2 NC	104365	Ex9CC100 12 3P 230V	1/6
220 V AC	100 A	100	1 NO + 2 NC	104364	Ex9CC100 12 3P 220V	1/6
127 V AC	100 A	100	1 NO + 2 NC	104363	Ex9CC100 12 3P 127V	1/6
110 V AC	100 A	100	1 NO + 2 NC	104362	Ex9CC100 12 3P 110V	1/6
48 V AC	100 A	100	1 NO + 2 NC	104373	Ex9CC100 12 3P 48V	1/6
42 V AC	100 A	100	1 NO + 2 NC	104372	Ex9CC100 12 3P 42V	1/6
36 V AC	100 A	100	1 NO + 2 NC	104368	Ex9CC100 12 3P 36V	1/6
24 V AC	100 A	100	1 NO + 2 NC	104367	Ex9CC100 12 3P 24V	1/6
<hr/>						
415 V AC	100 A	100	2 NO + 1 NC	104383	Ex9CC100 21 3P 415V	1/6
400 V AC	100 A	100	2 NO + 1 NC	104382	Ex9CC100 21 3P 400V	1/6
380 V AC	100 A	100	2 NO + 1 NC	104381	Ex9CC100 21 3P 380V	1/6
240 V AC	100 A	100	2 NO + 1 NC	104378	Ex9CC100 21 3P 240V	1/6
230 V AC	100 A	100	2 NO + 1 NC	104377	Ex9CC100 21 3P 230V	1/6
220 V AC	100 A	100	2 NO + 1 NC	104376	Ex9CC100 21 3P 220V	1/6
127 V AC	100 A	100	2 NO + 1 NC	104375	Ex9CC100 21 3P 127V	1/6
110 V AC	100 A	100	2 NO + 1 NC	104374	Ex9CC100 21 3P 110V	1/6
48 V AC	100 A	100	2 NO + 1 NC	104385	Ex9CC100 21 3P 48V	1/6
42 V AC	100 A	100	2 NO + 1 NC	104384	Ex9CC100 21 3P 42V	1/6
36 V AC	100 A	100	2 NO + 1 NC	104380	Ex9CC100 21 3P 36V	1/6
24 V AC	100 A	100	2 NO + 1 NC	104379	Ex9CC100 21 3P 24V	1/6

Main terminals wiring diagram



Technical Data Ex9CC

Capacitor contactors Ex9CC

General parameters

Contactors rated at AC-6b		
Suitable for switching of power factor compensation		
3-pole versions		
Mounting onto device rail DIN (35 or 75 mm) or onto panel		
With various combinations of built-in auxiliary contacts		
Accessories		
Side-mounted auxiliary contacts	AX4311	101292
Surge suppressor blocks	CCU4	104495 - 104500

Electrical parameters - main contacts and general

	Ex9CC25	Ex9CC38	Ex9CC50	Ex9CC65	Ex9CC80	Ex9CC100
Tested according to	IEC/EN 60947-4-1					
Rated operating voltage U_e	220-240 V AC, 380-415 V AC, 660-690 V AC					
Rated insulating voltage U_i	690 V AC					
Rated frequency	50/60 Hz					
Conventional free air thermal current I_{th}	50 A	50 A	80 A	80 A	125 A	125 A
Rated current AC-6b I_e						
AC-6b, 220-240 V	25 A	38 A	50 A	65 A	80 A	100 A
AC-6b, 380-415 V	25 A	38 A	50 A	65 A	80 A	100 A
AC-6b, 660-690 V	17.3 A	21.9 A	39 A	42 A	49 A	49 A
Rated operational power Q_e						
AC-6b, 220-240 V	8 kvar	15 kvar	20 kvar	25 kvar	30 kvar	40 kvar
AC-6b, 380-415 V	16 kvar	25 kvar	30 kvar	40 kvar	50 kvar	60 kvar
AC-6b, 660-690 V	25 kvar	40 kvar	50 kvar	60 kvar	80 kvar	90 kvar
Mechanical service life	1 000 000 operation cycles					
Electrical service life	200 000 operation cycles					
Operating frequency	180 operation cycles per hour		100 operation cycles per hour			
Max. permissible peak current I	30 x I_e					
Maximum short-circuit protection fuse Coordination type 1	63 A gG/gL	63 A gG/gL	100 A gG/gL	160 A gG/gL	200 A gG/gL	200 A gG/gL
Rated impulse withstand voltage U_{imp}	6 kV					
Safe isolation (EN 61140)						
Main contact	400 V AC		690 V AC		690 V AC	
Coil	400 V AC		690 V AC		690 V AC	
Overvoltage category	III					
EMC environment	A					
Comparative Tracking Index	400 A					
Prospective short circuit current I_q	50 kA					

Technical Data Ex9CC

Capacitor contactors Ex9CC

Electrical parameters - coil

	Ex9CC25/38	Ex9CC50/65	Ex9CC80/100
Control Voltage U_c	24, 36, 42, 48, 110, 127, 220, 230, 240, 380, 400, 415 V AC		
Tolerance of Control Voltage U_c	0.85 - 1.15 x U_c		
Frequency	50/60 Hz		
Power consumption			
Pick-up	100 VA / 50 W	240 VA / 100 W	280 VA / 120 W
Hold	10.5 VA / 5W	25 VA / 10 W	30 VA / 12 W
Duty	100%		
Closing delay	14 - 27 ms	20 - 30 ms	20 - 35 ms
Opening delay	7 - 22 ms	8 - 20 ms	6 - 20 ms

Electrical parameters - built-in auxiliary contacts

Rated operational voltage U_e	415 V AC		
Rated frequency	50 Hz		
Conventional free air thermal current I_{th}	10 A		
Rated operational current I_e			
AC-15	6 A / 120 V, 3 A / 240 V, 1.9 A / 415 V, 1.2 A / 600 V		
DC-13	0.55 A / 125 V, 0.31 A / 250 V		
Making capacity			
AC-15	7200 VA		
DC-13	69 W		
Breaking capacity			
AC-15	720 VA		
DC-13	69 W		

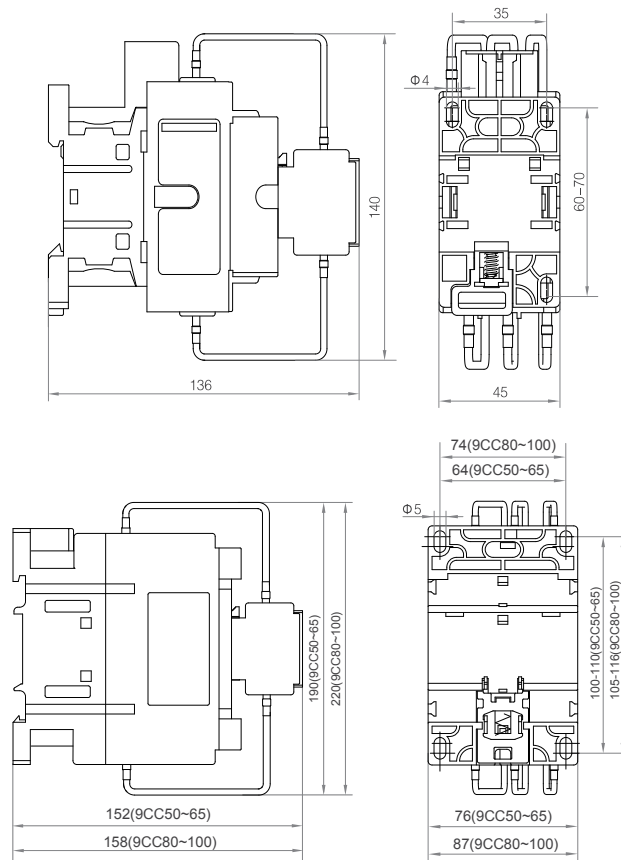
Mechanical parameters

	Ex9CC25/38	Ex9CC50/65	Ex9CC80/100
Device width	45 mm	76 mm	87 mm
Device height (including comp. block)	140 mm	190 mm	220 mm
Device depth (including comp. block)	136 mm	152 mm	158 mm
Mounting	easy fastening onto 35 mm (75 mm) device rail (DIN) or onto panel		
Degree of protection	IP20		
Terminals	lift		
Main contact terminal capacity	2.5 — 10 mm ²	2.5 — 25 mm ²	4 — 50 mm ²
Fastening torque of main contact terminals	2.5 Nm	6 Nm	9 Nm
Auxiliary contact terminal capacity	2x 1.5 - 6 mm ² (multi wire) 2x 1 - 4 mm ² (fine wire)		
Fastening torque of auxiliary contact terminals	1.5 - 1.7 Nm		
Ambient temperature	-20 — +40 °C		
Altitude	≤ 2000 m		
Relative humidity	≤ 90 %		
Resistance to humidity and heat	class 2		
Pollution degree	3		
Installation class	III		
Weight	0.62 kg	1.65 kg	1.9 kg
Power loss at I_e	3 W	4.2 W	7.5 W

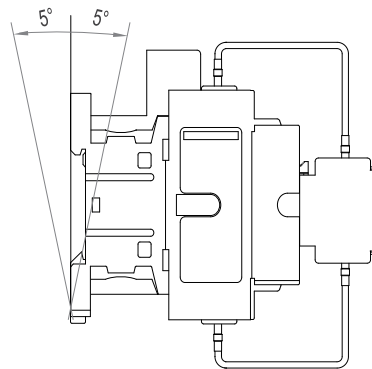
Technical Data Ex9CC

Capacitor contactors Ex9CC

Dimensions



Mounting position



Wiring diagram

