

LOAD-BREAK SWITCHES LT(S).. 20-125 A – GENERAL INFORMATION



SCHRACK INFO

Load-break switches can be used anywhere where compact ON-OFF switches with large contact gaps (isolators) and a high contact pressure, and where a greater short circuit protection is required.

Therefore, they are available as:

Main switches according to IEC/EN 60204 and VDE 0113 with locking device, terminal cover and forced-switching contactors.

Disconnectors according to IEC/EN 60947-3 and VDE 0660 Part 107 with disconnecting distance for 690 V.

Motor switches, 3-pole or 4-pole. According to IEC/EN 60947-3 and VDE 0660 Part 107, the LT(S) series switches have a high AC3 and AC23 A switching capacity.

MAIN SWITCHES AND MAIN SWITCHES WITH EMERGENCY STOP FUNCTION – GENERAL INFORMATION



LTS20VH4

SCHRACK INFO

In accordance with the standards IEC/EN 60204/ VDE0113, all production machines and machine tools must be equipped with a main switch, which disconnects all electrical equipment from all active mains connections during cleaning, maintenance and repair work, and during longer downtimes.

Where 2 or more main switches are required, suitable protective interlocking devices must be used. However, we recommend the use of a multi-pole main switch (cam switch).

The **main switch** must be one of the following types:

- Load-break switch which meets IEC/EN 60947-3 and VDE 0660 part 107 for application category AC23-B or DC-23B.
- Disconnector with auxiliary contact (for example: switching program A3-10), which ensures at all times that the switch devices can break the load before the main contacts of the disconnector are opened.
- The breaking capacity must be sufficient to shut off the power to the largest motor in stalled state together with the sum of the operating currents of all other motors and/or loads.

Requirements:

Disconnecting the electrical equipment from mains, where only one On and one Off position are available, clearly marked with O and I. It must be lockable in the Off position.

To protect against accidental touching, the line terminals of a main switch must meet at least the degree of protection IP2X. Colour of handle black or grey.

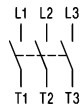
The **main switch with emergency stop function** must also be equipped with a red switch handle, and the face plate behind the switch handle must be yellow, so that the handle clearly stands out.

MAIN SWITCHES, CONTROL SWITCHES, COMMAND AND SIGNALLING DEVICES

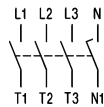
EMERGENCY STOP SWITCH FOR PANEL MOUNTING, LOCKABLE, IP66



IN8E2333



3-pole



4-pole

SCHRACK INFO

- Rated therm. current: AC21 / 690 V
- Motor: AC23 / 3x400 V
- Degree of protection, front: IP66
- Degree of protection, switch: IP40
- For max. 3 padlocks
- For dimensions, see page 856.

NOMINAL CURRENT/SWITCHING CAPACITY	TYPE	EAN CODE	AVAILABLE	ORDER NO.
3-POLE, LOCKING DEVICE SV4				
Emergency stop main switch, 3-pole/20 A/7.5 kW	LTS20 EHN4 A3	9004840276602		IN8E2332
Emergency stop main switch, 3-pole/25 A/10 kW	LTS25 EHN4 A3	9004840279399		IN8E2333
Emergency stop main switch, 3-pole/32 A/12.5 kW	LTS32 EHN4 A3	9004840276640		IN8E2334
Emergency stop main switch, 3-pole/40 A/16 kW	LTS40 EHN4 A3	9004840276695		IN8E2335
Emergency stop main switch, 3-pole/63 A/22 kW	LTS63 EHN4 A3	9004840279351		IN8E2337
Emergency stop main switch, 3-pole/80 A/22 kW	LTS80 EHN4 A3	9004840279368		IN8E2338
Emergency stop main switch, 3-pole/85 A/30 kW	LTS85 EHN4 A3	9004840625424		IN8E2339
Emergency stop main switch, 3-pole/100 A/37 kW	LTS100 EHN4 A3	9004840625462		IN8E233A
Emergency stop main switch, 3-pole/125 A/45 kW	LTS120 EHN4 A3	9004840625479		IN8E233B
4-POLE, LOCKING DEVICE SV4				
Emergency stop main switch, 4-pole/20 A/5.5 kW	LTS20 EHN4 A4	9004840459630		IN8E2432
Emergency stop main switch, 4-pole/25 A/7.5 kW	LTS25 EHN4 A4	9004840459647		IN8E2433
Emergency stop main switch, 4-pole/32 A/11 kW	LTS32 EHN4 A4	9004840459654		IN8E2434
Emergency stop main switch, 4-pole/40 A/15 kW	LTS40 EHN4 A4	9004840459661		IN8E2435
Emergency stop main switch, 4-pole/63 A/22 kW	LTS63 EHN4 A4	9004840459678		IN8E2437
Emergency stop main switch, 4-pole/80 A/22 kW	LTS80 EHN4 A4	9004840459685		IN8E2438



I KNOW WHERE TO FIND IT!

THE SCHRACK TECHNIK WEB SHOP WITH NAVIGATOR
WWW.SCHRACK.COM

- Finding product information made easy
- Buying products around the clock
- Quick access customer service



Order no. blue: on stock, usually ready for delivery on the day of order!

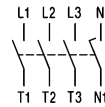


MAIN SWITCHES, CONTROL SWITCHES, COMMAND AND SIGNALLING DEVICES

EMERGENCY STOP SWITCH FOR FLOOR MOUNTING WITH 4-HOLE PATTERN, DOOR COUPLING AND LOCKING DEVICE, IP66



LTS20VH4



4-pole

SCHRACK INFO

- Installation depth adjustable later
- Rated therm. current: AC21 / 690 V
- Motor: AC23 / 3x400 V
- Degree of protection, front: IP66
- Degree of protection, switch: IP40
- For max. 3 padlocks
- For dimensions, see page 857.

NOMINAL CURRENT/SWITCHING CAPACITY	TYPE	EAN CODE	AVAILABLE	ORDER NO.
4-POLE, LOCKING DEVICE SV4				
Emergency stop main switch, 4-pole/20 A/7.5 kW	LTS20 VHN4 A4	9004840460445		IN8A2432
Emergency stop main switch, 4-pole/25 A/10 kW	LTS25 VHN4 A4	9004840460452		IN8A2433
Emergency stop main switch, 4-pole/32 A/12.5 kW	LTS32 VHN4 A4	9004840460469		IN8A2434
Emergency stop main switch, 4-pole/40 A/16 kW	LTS40 VHN4 A4	9004840375862		IN8A2435
Emergency stop main switch, 4-pole/63 A/22 kW	LTS63 VHN4 A4	9004840375909		IN8A2437
Emergency stop main switch, 4-pole/80 A/22 kW	LTS80 VHN4 A4	9004840460476		IN8A2438



I KNOW WHERE TO FIND IT!

WITH THE SCHRACK TECHNIK LIVE-PHONE APP

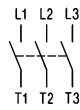
- Access technical product information at any time and from everywhere
- See availability and price immediately
- Order desired products easily

MAIN SWITCHES, CONTROL SWITCHES, COMMAND AND SIGNALLING DEVICES

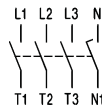
EMERGENCY STOP MAIN SWITCH FOR DIN-RAIL MOUNTING, LOCKABLE, IP40



LTS20SMA



3-pole



4-pole

SCHRACK INFO

- Rated therm. current: AC21 / 690 V
- Motor: AC23 / 3x400 V
- Degree of protection: IP40
- For max. 2 padlocks
- For dimensions, see page 858.

NOMINAL CURRENT/SWITCHING CAPACITY	TYPE	EAN CODE	AVAILABLE	ORDER NO.
3-POLE, LOCKING DEVICE SV1				
Emergency stop main switch, modular/20 A/7.5 kW	LTS20 SM AHN1 A3	9004840276626		IN8R2322
Emergency stop main switch, modular/25 A/10 kW	LTS25 SM AHN1 A3	9004840375848		IN8R2323
Emergency stop main switch, modular/32 A/12.5 kW	LTS32 SM AHN1 A3	9004840276671		IN8R2324
Emergency stop main switch, modular/40 A/16 kW	LTS40 SM AHN1 A3	9004840276718		IN8R2325
Emergency stop main switch, modular/63 A/22 kW	LTS63 SM AHN1 A3	9004840375893		IN8R2327
Emergency stop main switch, modular/80 A/22 kW	LTS80 SM AHN1 A3	9004840375930		IN8R2328
Emergency stop main switch, modular/85 A/30 kW	LTS85 SM AHN1 A3	9004840617092		IN8R2329
Emergency stop main switch, modular/100/37 kW	LTS100 SM AHN1 A3	9004840625516		IN8R232A
Emergency stop main switch, modular/125 A/45 kW	LTS125 SM AHN1 A3	9004840625523		IN8R232B
4-POLE, LOCKING DEVICE SV1				
Emergency stop main switch, modular/20 A/7.5 kW	LTS20 SM AHN1 A4	9004840460384		IN8R2422
Emergency stop main switch, modular/25 A/10 kW	LTS25 SM AHN1 A4	9004840460391		IN8R2423
Emergency stop main switch, modular/32 A/12.5 kW	LTS32 SM AHN1 A4	9004840460407		IN8R2424
Emergency stop main switch, modular/40 A/16 kW	LTS40 SM AHN1 A4	9004840460414		IN8R2425
Emergency stop main switch, modular/63 A/22 kW	LTS63 SM AHN1 A4	9004840460421		IN8R2427
Emergency stop main switch, modular/80 A/22 kW	LTS80 SM AHN1 A4	9004840460438		IN8R2428



I KNOW WHERE TO FIND IT!

THE SCHRACK TECHNIK WEB SHOP WITH NAVIGATOR
WWW.SCHRACK.COM

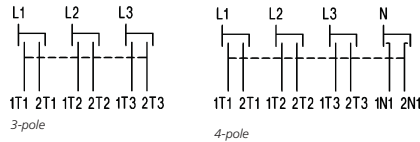
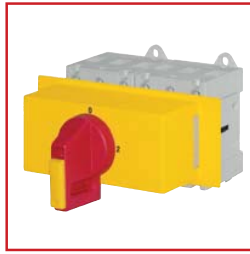
- Finding product information made easy
- Buying products around the clock
- Quick access customer service



Order no. blue: on stock, usually ready for delivery on the day of order!

MAIN SWITCHES, CONTROL SWITCHES, COMMAND AND SIGNALLING DEVICES

CHANGEOVER SWITCH WITH LOCKING DEVICE FOR DIN-RAIL MOUNTING, LOCKABLE, IP40



SCHRACK INFO

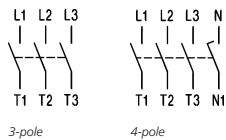
- Rated therm. current: AC21 / 690 V
- Motor: AC23 / 3x400 V
- Degree of protection: IP40
- For max. 2 padlocks
- For dimensions, see page 858.

NOMINAL CURRENT/SWITCHING CAPACITY	TYPE	EAN CODE	AVAILABLE	ORDER NO.
3-POLE, LOCKING DEVICE SV164				
Changeover switch, modular, lockable/20 A/ 7.5 kW	LTS20 SM AHN1 U3	9004840555646		IN8R5322
Changeover switch, modular, lockable/25 A/ 10 kW	LTS25 SM AHN1 U3	9004840555653		IN8R5323
Changeover switch, modular, lockable/32 A/ 12.5 kW	LTS32 SM AHN1 U3	9004840555660		IN8R5324
Changeover switch, modular, lockable/40 A/ 16 kW	LTS40 SM AHN1 U3	9004840555677		IN8R5325
Changeover switch, modular, lockable/63 A/ 22 kW	LTS63 SM AHN1 U3	9004840555684		IN8R5327
Changeover switch, modular, lockable/80 A/ 22 kW	LTS80 SM AHN1 U3	9004840555691		IN8R5328
4-POLE, LOCKING DEVICE SV164				
Changeover switch, modular, lockable/20 A/ 7.5 kW	LTS20 SM AHN1 U4	9004840555707		IN8R5422
Changeover switch, modular, lockable/25 A/ 10 kW	LTS25 SM AHN1 U4	9004840555714		IN8R5423
Changeover switch, modular, lockable/32 A/ 12.5 kW	LTS32 SM AHN1 U4	9004840555721		IN8R5424
Changeover switch, modular, lockable/40 A/ 16 kW	LTS40 SM AHN1 U4	9004840555738		IN8R5425
Changeover switch, modular, lockable/63 A/ 22 kW	LTS63 SM AHN1 U4	9004840555745		IN8R5427
Changeover switch, modular, lockable/80 A/ 22 kW	LTS80 SM AHN1 U4	9004840555752		IN8R5428

MAINTANANCE AND SAFETY SWITCH, PLASTIC ENCLOSED, LOCKABLE, IP65



LTS20PF



SCHRACK INFO

- Rated therm. current: AC21 / 690 V
- Motor: AC23 / 3x400 V
- Degree of protection: IP66
- For max. 3 padlocks
- For dimensions, see page 858.

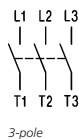
NOMINAL CURRENT/SWITCHING CAPACITY	TYPE	EAN CODE	AVAILABLE	ORDER NO.
3-POLE, LOCKING DEVICE SV4				
Emergency stop main switch, 3-pole/20 A/7.5 kW	LTS20 PFHN4 A3	9004840276619		IN8P2332
Emergency stop main switch, 3-pole/25 A/10 kW	LTS25 PFHN4 A3	9004840279382		IN8P2333
Emergency stop main switch, 3-pole/32 A/12.5 kW	LTS32 PFHN4 A3	9004840276657		IN8P2334
Emergency stop main switch, 3-pole/40 A/16 kW	LTS40 PFHN4 A3	9004840459753		IN8P2335
Emergency stop main switch, 3-pole/63 A/22 kW	LTS63 PFHN4 A3	9004840459760		IN8P2337
Emergency stop main switch, 3-pole/80 A/22 kW	LTS80 PFHN4 A3	9004840279375		IN8P2338
4-POLE, LOCKING DEVICE SV4				
Emergency stop main switch, 4-pole/20 A/7.5 kW	LTS20 PFHN4 A4	9004840459777		IN8P2432
Emergency stop main switch, 4-pole/25 A/10 kW	LTS25 PFHN4 A4	9004840459784		IN8P2433
Emergency stop main switch, 4-pole/32 A/12.5 kW	LTS32 PFHN4 A4	9004840276664		IN8P2434
Emergency stop main switch, 4-pole/40 A/16 kW	LTS40 PFHN4 A4	9004840459791		IN8P2435
Emergency stop main switch, 4-pole/63 A/18.5 kW	LTS63 PFHN4 A4	9004840459807		IN8P2437
Emergency stop main switch, 4-pole/80 A/22 kW	LTS80 PFHN4 A4	9004840459814		IN8P2438

MAIN SWITCHES, CONTROL SWITCHES, COMMAND AND SIGNALLING DEVICES

MAIN SWITCH FOR PANEL MOUNTING, LOCKABLE, IP66



LTS20EH4



SCHRACK INFO

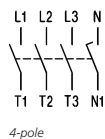
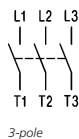
- Rated therm. current: AC21 / 690 V
- Motor: AC23 / 3x400 V
- Degree of protection, front: IP66
- Degree of protection, switch: IP40
- For max. 3 padlocks
- For dimensions, see page 856.

NOMINAL CURRENT/SWITCHING CAPACITY	TYPE	EAN CODE	AVAILABLE	ORDER NO.
3-POLE, LOCKING DEVICE SV4				
Main switch, 3-pole/20 A/7.5 kW	LTS20 EH4 A3	9004840276596		IN8E1332
Main switch, 3-pole/25 A/10 kW	LTS25 EH4 A3	9004840375824		IN8E1333
Main switch, 3-pole/32 A/12.5 kW	LTS32 EH4 A3	9004840276633		IN8E1334
Main switch, 3-pole/40 A/16 kW	LTS40 EH4 A3	9004840276688		IN8E1335
Main switch, 3-pole/63 A/22 kW	LTS63 EH4 A3	9004840375879		IN8E1337
Main switch, 3-pole/80 A/22 kW	LTS80 EH4 A3	9004840375916		IN8E1338
Main switch, 3-pole/85 A/30 kW	LTS85 EH4 A3	9004840625431		IN8E1339
Main switch, 3-pole/100 A/37 kW	LTS100 EH4 A3	9004840625448		IN8E133A
Main switch, 3-pole/125 A/45 kW	LTS125 EH4 A3	9004840625455		IN8E133B

MAIN SWITCH FOR DIN-RAIL MOUNTING, LOCKABLE, IP40



LTS20MAH1



SCHRACK INFO

- Rated therm. current: AC21 / 690 V
- Motor: AC23 / 3x400 V
- Degree of protection: IP40
- For max. 2 padlocks
- For dimensions, see page 858.

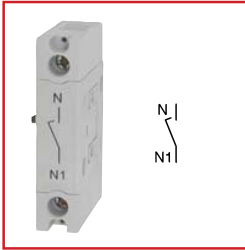
NOMINAL CURRENT/SWITCHING CAPACITY	TYPE	EAN CODE	AVAILABLE	ORDER NO.
3-POLE, LOCKING DEVICE SV1				
Main switch, 3-pole/20 A/7.5 kW	LTS20 SM AH1 A3	9004840375817		IN8R1322
Main switch, 3-pole/25 A/10 kW	LTS25 SM AH1 A3	9004840375831		IN8R1323
Main switch, 3-pole/32 A/12.5 kW	LTS32 SM AH1 A3	9004840375855		IN8R1324
Main switch, 3-pole/40 A/16 kW	LTS40 SM AH1 A3	9004840276701		IN8R1325
Main switch, 3-pole/63 A/22 kW	LTS63 SM AH1 A3	9004840375886		IN8R1327
Main switch, 3-pole/80 A/22 kW	LTS80 SM AH1 A3	9004840375923		IN8R1328
Main switch, 3-pole/85 A/30 kW	LTS85 SM AH1 A3	9004840625486		IN8R1329
Main switch, 3-pole/100 A/37 kW	LTS100 SM AH1 A3	9004840625493		IN8R132A
Main switch, 3-pole/125 A/45 kW	LTS125 SM AH1 A3	9004840625509		IN8R132B
4-POLE, LOCKING DEVICE SV1				
Main switch, 4-pole/20 A/7.5 kW	LTS20 SM AH1 A4	9004840459692		IN8R1422
Main switch, 4-pole/25 A/10 kW	LTS25 SM AH1 A4	9004840459708		IN8R1423
Main switch, 4-pole/32 A/12.5 kW	LTS32 SM AH1 A4	9004840459715		IN8R1424
Main switch, 4-pole/40 A/16 kW	LTS40 SM AH1 A4	9004840459722		IN8R1425
Main switch, 4-pole/63 A/22 kW	LTS63 SM AH1 A4	9004840459739		IN8R1427
Main switch, 4-pole/80 A/22 kW	LTS80 SM AH1 A4	9004840459746		IN8R1428



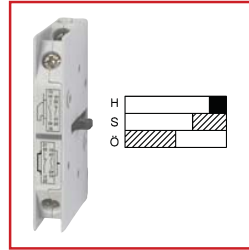
Order no. blue: on stock, usually ready for delivery on the day of order!

MAIN SWITCHES, CONTROL SWITCHES, COMMAND AND SIGNALLING DEVICES

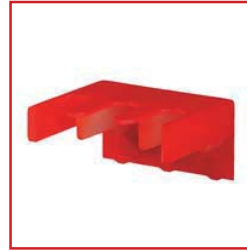
ADD-ON MODULES FOR MAIN SWITCHES AND SWITCH DISCONNECTORS



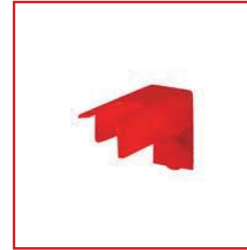
IN809003



IN809001



IN809012



IN809015

DESCRIPTION	EAN CODE	AVAILABLE	ORDER NO.
4TH POLE FOR 3-POLE SWITCHES			
LTS20 to LTS40, panel mounting	9004840508833		IN809002
LTS63 to LTS80, panel mounting	9004840509113		IN809003
LTS20 to LTS40, modular mounting, floor mounting	9004840509106		IN809004
LTS63 to LTS80, modular mounting, floor mounting	9004840509120		IN809005
AUXILIARY CONTACT BLOCK 1 NO + 1 NC			
LTS20 to LTS125, panel mounting, modular mounting, floor mounting	9004840508857		IN809001
TERMINAL COVER, 3-POLE			
LTS20 to LTS40, modular mounting, floor mounting	9004840665369		IN809012
LTS20 to LTS40, panel mounting	9004840665376		IN809013
LTS63 to LTS80, panel mounting, modular mounting, floor mounting	9004840665376		IN809013
LTS85 to LTS125, panel mounting, modular mounting, floor mounting	9004840665383		IN809014
TERMINAL COVER FOR 4TH POLE			
Mains side LTS63/LTS80, panel mounting, modular mounting, floor mounting	9004840665390		IN809015
Load side LTS63/LTS80, panel mounting, modular mounting, floor mounting	9004840665406		IN809016
TERMINAL COVER, 4-POLE			
LTS20 to LTS40, modular mounting, floor mounting	9004840665369		IN809012
LTS85 to LTS125, panel mounting, modular mounting, floor mounting	9004840665383		IN809014



I KNOW WHERE TO FIND IT!

WITH THE SCHRACK TECHNIK LIVE-PHONE APP

- Access technical product information at any time and from everywhere
- See availability and price immediately
- Order desired products easily

MAIN SWITCHES, CONTROL SWITCHES, COMMAND AND SIGNALLING DEVICES

MAIN SWITCHES, LOAD-BREAK SWITCHES LT(S).. – TECHNICAL DATA

Data meet IEC 947-3, IEC 947-5-1, VDE 0660, EN 60947-3, EN 60947-5-1

Type		LTS20	LTS25	LTS32	LTS40	LTS63	LTS80	LTS85	LTS100	LTS125
Main contacts										
Thermal rated operating current I_{th} open	A	20	25	32	40	63	80	85	100	125
Thermal rated operating current I_{th} sealed	A	20	25	32	40	63	80	85	100	110
Rated insulation voltage U_i : ¹⁾	V	690	690	690	690	690	690	1000 ⁵⁾	1000 ⁵⁾	1000 ⁵⁾
Rated operating current I_n AC21A	A	20	25	32	40	63	80	85	100	125
Making capacity I_{eff} 3x380-440V	A	160	190	220	300	370	440	600	725	850
Breaking capacity	3x220-240V	A	160	180	200	250	330	380	480	580
	3x380-440V	A	160	180	200	250	330	380	480	580
	3x660-690V	A	80	110	140	170	190	220	250	330
Breaker conditions up to	V	690	690	690	690	690	690	1000	1000	1000
Motor switches AC3 3x400V	A	12	16	23	30	37	37	45	60	72
Motor switches AC3 3x220-240V for operational switching	kW	3	4	5.5	7.5	11	11	15	18.5	22
	kW	5.5	7.5	11	15	18.5	18.5	22	30	37
	kW	5.5	7.5	11	15	18.5	18.5	18.5	22	30
Main switch, AC23 3x400V	A	16	20	25	32	45	45	60	72	85
Main switch, AC23A, 3x220-240V Comutator principal, AC23B 3x380-440V Repair switch 3x660-690V	kW	4	5.5	7.5	9	15	15	18.5	22	30
	kW	7.5	10	12.5	16	22	22	30	37	45
	kW	5.5	7.5	11	15	18.5	18.5	22	30	37
Conditional rated short-circuit current	kA_{eff}	10	10	10	10	10	10	10	10	10
Maximum back-up fuse gL (gG)	A	25	35	40	50	63	80	100	100	125
Mechanical endurance	x10 ³	200	200	200	200	100	100	100	100	100
Rated short-time current protection (1-second power)	A	250	300	400	500	600	850	1000	1200	1500
Maximum terminal capacity										
solid or stranded	mm ²	10	10	10	10	25	25	50	50	50
	AWG	8	8	8	8	4	4	0	0	0
finely stranded (+ ferrule)	mm ²	6	6	6	6	16	16	35	35	35
	AWG	10	10	10	10	6	6	2	2	2
Terminal screw		M3.5	M3.5	M3.5	M3.5	M5	M5	M6	M6	M6
Tightening torque	Nm lb.inch	0.8-1.7 7-15	0.8-1.7 7-15	0.8-1.7 7-15	0.8-1.7 7-15	2-4 18-35	2-4 18-35	3.5-4.5 31-40	3.5-4.5 31-40	3.5-4.5 31-40
Auxiliary contacts										
Rated insulation voltage U_i : ¹⁾	V	690	690	690	690	690	690	690	690	690
Thermal rated operating current I_{th} , I_{th}	A	10	10	10	10	10	10	10	10	10
Breaking capacity AC15 220-240V	A	2.5	2.5	2.5	2.5	2.5	2.5	2.5	2.5	2.5
	A	1.5	1.5	1.5	1.5	1.5	1.5	1.5	1.5	1.5
Breaking capacity AC15 380-440V	A	1.5	1.5	1.5	1.5	1.5	1.5	1.5	1.5	1.5
	A	1.5	1.5	1.5	1.5	1.5	1.5	1.5	1.5	1.5
Conditional rated short-circuit current	kA_{eff}	3	3	3	3	3	3	3	3	3
Maximum back-up fuse gL (gG)	A	10	10	10	10	10	10	10	10	10
Maximum terminal capacity										
solid or stranded	mm ²	2.5	2.5	2.5	2.5	2.5	2.5	2.5	2.5	2.5
	AWG	12	12	12	12	12	12	12	12	12
finely stranded (+ ferrule)	mm ²	2.5	2.5	2.5	2.5	2.5	2.5	2.5	2.5	2.5
	AWG	14	14	14	14	14	14	14	14	14

Data in accordance with UL and cUL

Type		LTS20	LTS25	LTS32	LTS40	LTS63	LTS80	LTS85	LTS100	LTS125
Rated operating voltage	V	600	600	600	600	600	600	600	600	600
Ampere-Rating "General use"	A	20	25	32	40	63	80	85	100	125
DOL rating, 3-phase	110-120V	HP	1	1.5	2	2	3	5	7.5	10
	220-240V	HP	3	5	5	5	10	10	20	25
	440-480V	HP	7.5	10	10	10	20	20	40	50
	550-600V	HP	10	10	15	15	25	25	50	60
DOL rating, 1-phase	110-120V	HP	1	1	1	1	2	3	5	7.5
	200-208V	HP	1	2	2	2	3	3	7.5	10
	220-240V	HP	2	2	3	3	5	5	10	15
Fuse size (RK5) 5kA / 600V	Manual Motor Controller	A	40	50	50	70	90	110	200	250
	Motor Disconnect	A	40	50	50	50	70	70	-	-

1) Applies to: Mains with earthed Y point, overvoltage category I to III, pollution degree 3 (Industrial standard); Uimp = 6 kV.

Values for other conditions on request

2) The smaller value is for 6-pole switches

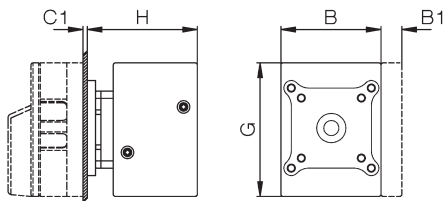
5) Uimp = 8 kV

MAIN SWITCHES, CONTROL SWITCHES, COMMAND AND SIGNALLING DEVICES

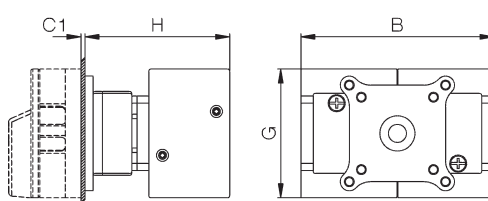
MAIN SWITCHES, LOAD-BREAK SWITCHES LT(S).. – DIMENSIONS

PANEL MOUNTING

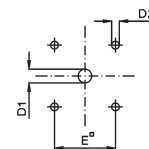
Installation LT.. E(HN)..
On-Off switch, 3-pole, 4-pole



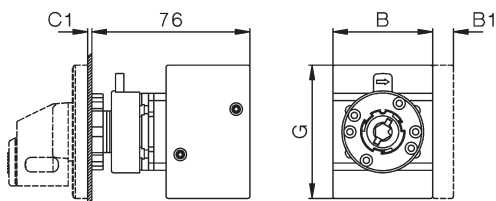
Changeover switch, 3-pole, 4-pole



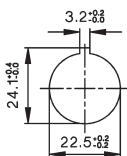
Drilling plan



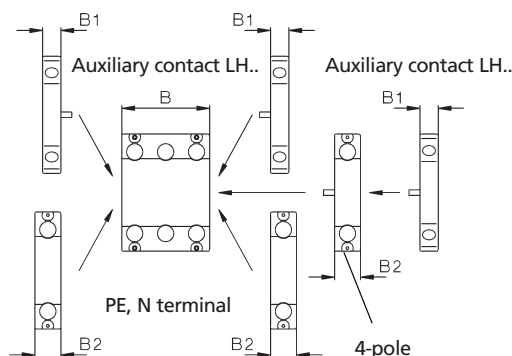
Central mounting LTS.. Z(HN)..
On-Off switch, 3-pole, 4-pole



Drilling plan

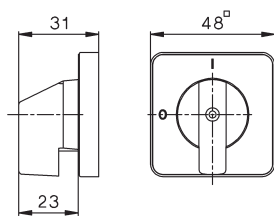


Mounting of optional modules LTS20 - LTS80
Installation, central mounting

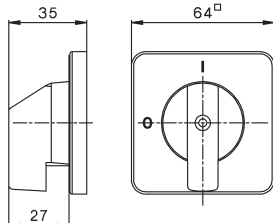


Type	Label or locking device	Changeover switch		3-pole		4-pole		Auxiliary contacts		4-pole PE			3-4-pole		3-4-pole	
		Off switch	3-pole	4-pole	3-pole	4-pole	B1	B2	C1	D1	D2	E	F	G	H	H
LTS20-80..	48 □, SV1		48	62.5	-	-	10	14.5	1-5	10	5	36	-	64	54	-
LTS20-80..	64 □, SV4, SV164		64	62.5	97	126	10	14.5	1-5	10	5	48	-	64	54	74
LTS85-125..	64 □, SV4		64	78	-	-	10	-	1-5	10	5	48	-	85	60	-

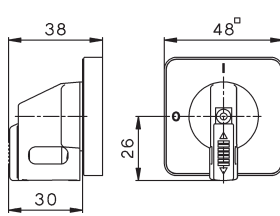
Label
48 □



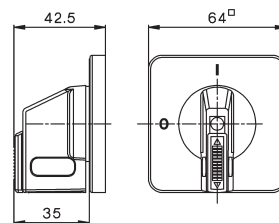
64 □



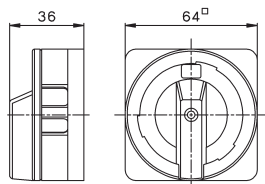
Locking devices SV1



SV164



Locking devices SV4



MAIN SWITCHES, CONTROL SWITCHES, COMMAND AND SIGNALLING DEVICES

MAIN SWITCHES, LOAD-BREAK SWITCHES LT(S).. – DIMENSIONS

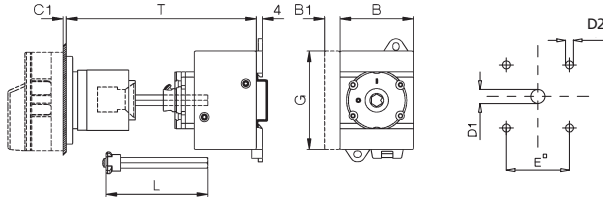
FLOOR MOUNTING

Floor mounting LT(S).. V(HN)..

On-Off switch, 3-pole, 4-pole

Drilling plan

$L = T - 60 \pm 3$ applies only to switches LTS...



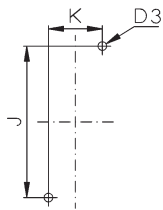
Type	T min T max	L
LTS20-80 VH..	111 - 190	T - 60±3
LTS85-125 VH..	115 - 190	T - 64±3

Type	Changeover switch Off switch	3,4-pole		PE 4th pole B2	C1	D1	D2	D3	E	G	K	J		
		3-pole	4-pole											
LTS20 - 40	64□, SV4, SV164	48	48	97	10	14.5	1-5	10	5	M4	48	64	25	70
LTS63, 80	64□, SV4, SV164	48	48	97	10	14.5	1-5	10	5	M4	48	64	25	70
LTS85 - 125	64□, SV4	78	78	-	10	-	1-5	9	5	M4	48	85	38	90

Floor mounting

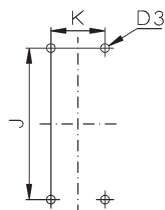
On-Off switches LTS20 - LTS80

3-pole, 4-pole



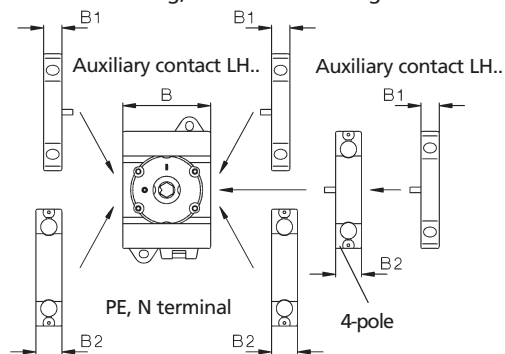
LTS85-125

3-pole, 4-pole



Mounting of optional modules LTS20 - LTS80

Floor mounting, modular mounting



- 1) dia. 22-25 only for LT80(100) VH(N)34 ..
- 2) dia. 26-30 only for LT125(160) VH(N)34 ..

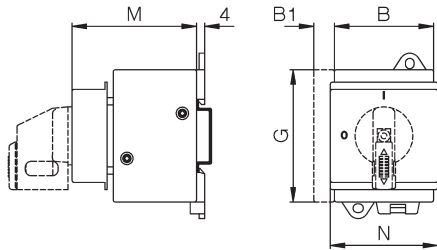
MAIN SWITCHES, CONTROL SWITCHES, COMMAND AND SIGNALLING DEVICES

MAIN SWITCHES, LOAD-BREAK SWITCHES LT(S).. – DIMENSIONS

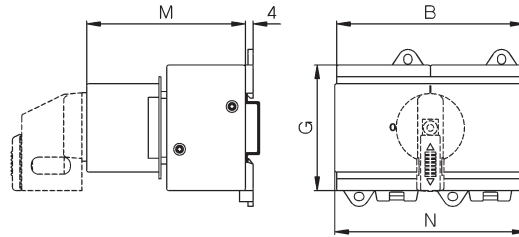
MODULAR

Modular mounting LT(S).. SMA(HN)..

On-Off switch, 3-pole, 4-pole



Changeover switch, 3-pole, 4-pole

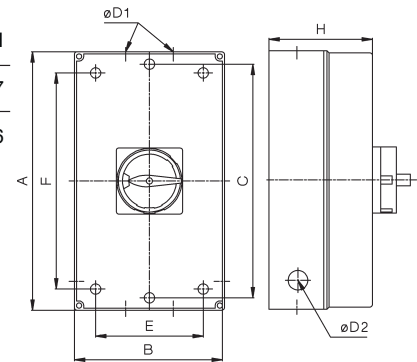


Type	Locking device	Changeover switch		3,4-pole			G	3,4-pole		3,4-pole			
		Off switch	3-pole	4-pole	Auxiliary contacts	4th pole PE		3-pole 4-pole	M	M	3-pole 4-pole	N	
LTS20 - 40	SV1, SV164		B	B	B	B1	B2		M	M	M	N	N
LTS63, 80	SV1, SV164		48	48	96	10	14,5	64	60	60	74	52	97 ¹⁾
LTS85-125..	SV164		48	62.5	125	10	14,5	64	60	74	74	52	126
			78	78	-	10	-	85	60	-	-	78	-

1) including break-off taps 126 mm

Repair switch with insulated enclosure LT(S)..PF.

Type	Poles	A	B	D1	D2	E	F	H
LTS20 PFH.. A., LTS40 PFH.. A	3, 4	130	98	2x25,5/20,5	-	75	100	77
LTS63 PFH.. - LTS80 PFH.. A.	3, 4	200	120	40,5/32,5 +16,5	-	95	165	86



MAIN SWITCHES, CONTROL SWITCHES, COMMAND AND SIGNALLING DEVICES

CAM SWITCHES – DESIGN OVERVIEW

Type	Ratings			Motor			Degree of protection from the front in installed condition	Label	Types				
	Nominal operating current Therm. I _{th} open AC21 at U _e			AC3 3~400V kW	AC23 3~400V A	AC3 3~400V kW			Panel mounting M10H, M20 IP65 IP 40	Centre mounting with label IP 65	Rail mounting IP 40	Modular mounting IP 40	Insulated enclosure ..P.. IP 40 ..PF.. IP 65
M4H	10	10	440	2.2	6	3	30 [□]	M4H E ●◆	M4H Z ●◆	-	-	-	
M10H	20	20	690	5.5	16	7.5	48 [□]	M10H E ●◆	M10H Z ●◆	M10H SM ●◆	M10H SMA ●◆	-	
M10	20	20	440	5.5	16	7.5	48 [□]	-	-	-	-	M10 P(F) ●◆	
M20	32	32	690	11	30	15	48 [□]	-	M20 Z ●◆	-	M20 SMA ●◆	-	

TYPE KEY

