

## AUXILIARY CONTACT BLOCKS FOR FRONT FOR LSDD, SIZE 00



LSZDD213



LSZD0510

### SCHRACK INFO

- For contactors LSDD with included NO contact
- For snapping on at the front
- LSDDs can be fitted with max. 4 additional auxiliary contacts.
- For dimensions, wiring diagram and location of the terminals, see page from 818.

DESCRIPTION	NOTE	EAN CODE	AVAILABLE	ORDER NO.
For size 00, 1 NO, cable from bottom	DIN EN 50005	9004840540932		<b>LSZD0510</b>
For size 00, 1 NC, cable from bottom	DIN EN 50005	9004840540789		<b>LSZD0501</b>
For size 00, 1 NC	DIN EN 50012	9004840540734		<b>LSZDD201</b>
For size 00, 1 NO + 2 NC	DIN EN 50012	9004840540741		<b>LSZDD212</b>
For size 00, 1 NO + 3 NC	DIN EN 50012	9004840540758		<b>LSZDD213</b>
For size 00, 2 NO + 2 NC	DIN EN 50012	9004840540765		<b>LSZDD222</b>

## AUXILIARY CONTACT BLOCKS FRONT FOR LSDD, LSRD, LSUD AND LSHD, SIZE 00



LSZDH522



LSZD0510

### SCHRACK INFO

- For contactors LSDD with one included NC or for contactors LSRD, LSUD and LSHD
- For snapping on at the front
- LSDD, LSRD, LSUD and LSHD can be fitted with max. 4 additional auxiliary contacts
- For dimensions, wiring diagram and location of the terminals, see page from 818.

DESCRIPTION	NOTE	EAN CODE	AVAILABLE	ORDER NO.
For size 00, 1 NO, cable from bottom	DIN EN 50005	9004840540932		<b>LSZD0510</b>
For size 00, 1 NC, cable from bottom	DIN EN 50005	9004840540789		<b>LSZD0501</b>
For size 00, 4 NO	DIN EN 50005	9004840541151		<b>LSZDH540</b>
For size 00, 3 NO + 1 NC	DIN EN 50005	9004840541144		<b>LSZDH531</b>
For size 00, 2 NO + 2 NC	DIN EN 50005	9004840541137		<b>LSZDH522</b>

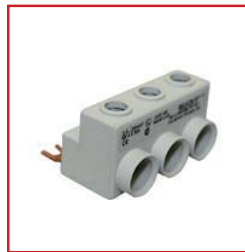
## PARALLEL CONNECTOR (STAR POINT) AND FEED TERMINAL, SIZE 00



LSZDY002



LSZDD003



LSZDD001

### SCHRACK INFO

- For dimensions, see page from 817.

DESCRIPTION	EAN CODE	AVAILABLE	ORDER NO.
<b>PARALLEL CONNECTOR</b>			
Size 00, 25mm <sup>2</sup> 3-pole + terminal	9004840540680		LSZDD003
Size 00, 25 mm <sup>2</sup> 4-pole + terminal	9004840540628		LSZDD004
Y point for size 00, 3-pole (can be reduced by one pole)	9004840540116		<b>LSZDY002</b>
<b>FEED TERMINAL</b>			
Size 00, 6 mm <sup>2</sup> 3-pole + 3 terminals	9004840541373		LSZDD001

## WIRING KITS, MECHANICAL INTERLOCK AND CONNECTION CLIPS, SIZE 00



LSZDW002

### SCHRACK INFO

- When using the mechanical interlock, there will be no gap between the contactors.

DESCRIPTION	EAN CODE	AVAILABLE	ORDER NO.
Wiring kit for reversing contactor assemblies, size 00*	9004840541359		<b>LSZDW001</b>
Wiring kit for wye-delta assemblies, size 00*	9004840541366		LSZDY001
2 connection clips + mechanical interlock, size 00	9004840554366		<b>LSZDW002</b>

\* Includes 2 connection clips and 1 mechanical interlock

## WYE-DELTA TIMER RELAY



LSZD0102

### SCHRACK INFO

- These timer relays have a dead time of 50 ms (between the wye and the delta).
- Dimensions (WxHxD): 22.5 x 102 x 86 mm

DESCRIPTION	COIL VOLTAGE	FREQUENCY	EAN CODE	AVAILABLE	ORDER NO.
YD timer relay, 20s	24/240 VAC 24 VDC	50/60 Hz	9004840540710		<b>LSZD0101</b>
YD timer relay, 60s	24/240 VAC 24 VDC	50/60 HZ	9004840540727		<b>LSZD0102</b>

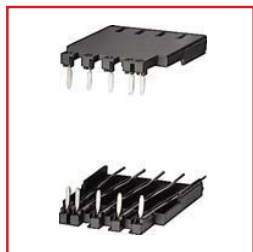
## CONNECTION ELEMENTS FOR CONTACTORS AND MOTOR PROTECTION SWITCHES, SIZE 00 (0)



LSZDD005

DESCRIPTION	COIL VOLTAGE	EAN CODE	AVAILABLE	ORDER NO.
For contactor of size 00 with motor protection switch size 00	AC-DC	9004840541625		<b>LSZDD005</b>
For contactor of size 00 with motor protection switch size 0	AC-DC	9004840541656		<b>LSZDD006</b>

## ■ SOLDER PIN ADAPTER, SIZE 00



LSZDD002

### ■ SCHRACK INFO

- For mounting size 00 contactors on printed circuit boards.
- Adapter for mounting size 00 contactors with attached 4-pole auxiliary switch block on request.

DESCRIPTION	EAN CODE	AVAILABLE	ORDER NO.
Solder pin adapter	9004840540635		LSZDD002

## ■ SURGE SUPPRESSORS AND INTERFERENCE SUPPRESSION DIODES (PLUGGABLE), SIZE 00



LSZD0004

### ■ SCHRACK INFO

- For dimensions and terminal names, see page 805.

DESCRIPTION	COIL VOLTAGE	EAN CODE	AVAILABLE	ORDER NO.
Varistor for size 00	24-48 V AC; 24-70 V DC	9004840540505		<a href="#">LSZD0001</a>
VARIATOR FOR SIZE 00	127-240 V AC; 150-250 V DC	9004840540512		<a href="#">LSZD0002</a>
RC-element for size 00	127-240 V AC; 150-250 V DC	9004840540529		<a href="#">LSZD0003</a>
Interference suppression diode for size 00	12-250 V DC	9004840540536		<a href="#">LSZD0004</a>

## ■ AUXILIARY CONTACTS, FRONT, SIZES 0-12



LSZ0D001



LSZ0D010

### ■ SCHRACK INFO

- Up to 4 auxiliary contacts can be snapped onto front of contactor
- For dimensions, wiring diagram and location of the terminals, see page from 818.

DESCRIPTION	EAN CODE	AVAILABLE	ORDER NO.
Size 0-12, 1 NO	9004840541083		<a href="#">LSZ0D010</a>
Size 0-12, 1 NC	9004840541090		<a href="#">LSZ0D001</a>
Size 0-12, 1 NO early-make	9004840541113		LSZ0D910
Size 0-12, 1 NC delayed	9004840541106		LSZ0D901



## AUXILIARY CONTACT BLOCKS, FRONT, SIZES 0-12



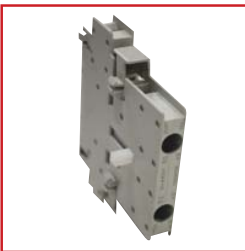
LSZ0D122

### SCHRACK INFO

- For dimensions, wiring diagram and location of the terminals, see page 809.

DESCRIPTION	NOTE	EAN CODE	AVAILABLE	ORDER NO.
Size 0-12, 3 NO + 1 NC	DIN EN 50012	9004840541014		<b>LSZ0D131</b>
Size 0-12, 2 NO + 2 NC	DIN EN 50012	9004840541007		<b>LSZ0D122</b>
Size 0-12, 1 NO + 3 NC	DIN EN 50012	9004840540994		<b>LSZ0D113</b>
Size 0-12, 4 NO	DIN EN 50005	9004840541502		<b>LSZ0D140F</b>
Size 0-12, 3 NO + 1 NC	DIN EN 50005	9004840591088		<b>LSZ0D131F</b>
Size 0-12, 2 NO + 2 NC	DIN EN 50005	9004840541526		<b>LSZ0D122F</b>
Size 0-12, 4 NC	DIN EN 50005	9004840591071		LSZ0D104F

## AUXILIARY CONTACT BLOCKS - SIDE-MOUNTED, SIZES 0-12



LSZ0D711

### SCHRACK INFO

- For dimensions, wiring diagram and location of the terminals, see page 818.

DESCRIPTION	NOTE	EAN CODE	AVAILABLE	ORDER NO.
Size 0-12, 1 NO + 1 NC, first position	DIN EN 50012	9004840541175		<b>LSZ0D711</b>
Size 3-12, 1 NO + 1 NC, second position	DIN EN 50012	9004840541182		<b>LSZ3D811</b>

## MECHANICAL INTERLOCK, SIZES 0-12




LSZ0W002

### SCHRACK INFO

- For dimensions, wiring diagram and location of the terminals, see page 818.

DESCRIPTION	EAN CODE	AVAILABLE	ORDER NO.
Size 0-3 (including 2 NC)	9004840541403		<b>LSZ0W002</b>
Size 6-12 (without auxiliary contacts)	9004840541557		<b>LSZ6W001</b>

## WIRING KITS FOR REVERSING CONTACTOR ASSEMBLIES, SIZES 0-12

DESCRIPTION	EAN CODE	AVAILABLE	ORDER NO.
Size 0*	9004840541380		<b>LSZ0W001</b>
Size 2, incl. connection clips	9004840541441		LSZ2W001
Size 3, incl. connection clips	9004840541489		LSZ3W001
Size 6*	9004840541540		LSZ6W002
Size 10*	9004840541588		LSZEW001
Size 12*	9004840541618		LSZGW001

\* Wiring devices perform the function of connection clips

## WIRING KITS AND ACCESSORIES FOR WYE-DELTA ASSEMBLIES, SIZES 0-12

### SCHRACK INFO

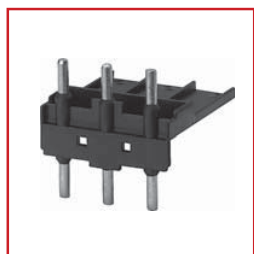
\* Wiring kits from frame size 2 only include the wiring element for the contactor bottom (in addition to the Y jumper). A double feed is recommended for feeding of line and delta contactors.

DESCRIPTION	EAN CODE	AVAILABLE	ORDER NO.
<b>WIRING KITS</b>			
Size 0, incl. mech. interlock, connection clips a. Y jumper	9004840541397		LSZ0Y001
Size 2-2-0, incl. connection clips a. Y jumper*	9004840541465		LSZ2Y004
Size 2-2-2, incl. connection clips a. Y jumper*	9004840541458		LSZ2Y003
Size 3-12			on request
<b>ACCESSORIES</b>			
Mounting plate for size 2-2-0	9004840541427		LSZ2Y001
Mounting plate for size 2-2-2	9004840541434		LSZ2Y002

## CONNECTION MODULE FOR CONTACTORS AND MOTOR PROTECTION SWITCHES, SIZE 0-3






LSZ0D002



LSZ2D004

### SCHRACK INFO

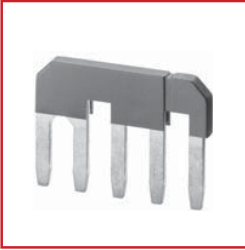
Contactors with AC or DC coil have different frame heights. Therefore, different connection modules are required.

DESCRIPTION	COIL VOLTAGE	EAN CODE	AVAILABLE	ORDER NO.
Size 0	AC	9004840541632		<b>LSZ0D002</b>
Size 0	DC	9004840541649		<b>LSZ0D004</b>
Size 2	AC	9004840541663		<b>LSZ2D004</b>
Size 2	DC	9004840541670		LSZ2D005
Size 3	AC	9004840541687		LSZ3D004
Size 3	DC	9004840541694		LSZ3D003

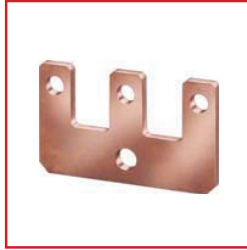


# CONTACTORS

## PARALLEL CONNECTORS (Y POINT) AND FEED TERMINALS, SIZES 0-12



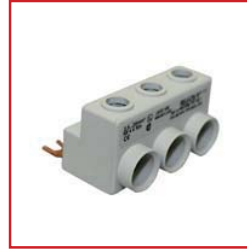
LSZ0Y002



LSZ6Y003



LSZ2D003



BEZ00116

### SCHRACK INFO

- Y jumpers up to size 3 can be shortened by one pole\*.
- Recommended touch-protection cover for Y connector of size 6: LSZ6D002, for Y connectors of sizes 10 and 12: LSZED002.
- For dimensions and location of the terminals, see page from 817.

DESCRIPTION	EAN CODE	AVAILABLE	ORDER NO.
<b>PARALLEL CONNECTOR</b>			
Size 0, 35 mm <sup>2</sup> 3-pole + 1 terminal	9004840540697		LSZ0D003
Size 0 (Y point), 3-pole*	9004840540123		LSZ0Y002
Size 2, 95 mm <sup>2</sup> 3-pole + 1 terminal	9004840540703		LSZ2D003
Size 2 (Y point), 3-pole*	9004840540154		LSZ2Y005
Size 3 (Y point), 3-pole*	9004840540161		LSZ3Y004
Size 6 (Y point), 3-pole (hole diameter 10.5 mm)	9004840540130		LSZ6Y003
Size 10, 12 (Y point), 3-pole (hole diameter 12.5 mm)	9004840540147		LSZEY003
<b>FEED TERMINALS</b>			
Size 0, 25 mm <sup>2</sup> 3-pole + 3 terminals	9004840542318		<b>BEZ00116</b>
Size 2, 50 mm <sup>2</sup> 3-pole + 3 terminals	9004840542301		<b>BEZ00216</b>
Size 3, 95 mm <sup>2</sup> 1-pole + terminal	9004840541519		LSZ3D001

## SURGE SUPPRESSORS AND INTERFERENCE SUPPRESSION DIODES, SIZES 0-12



LSZ00002

### SCHRACK INFO

- Up to size 3, these components can be snapped in either on the top of the contactor (assemblies with thermal overload relay) or at the bottom (assemblies with motor protection switch). In sizes 6-12, these components only be snapped in on the top.
- For dimensions and terminal names, see page 805.

DESCRIPTION	COIL VOLTAGE	EAN CODE	AVAILABLE	ORDER NO.
<b>DIODE ASSEMBLIES</b>				
Size 0 (top-mounting)	24 V DC	9004840540581		<b>LSZD0005</b>
Size 0 (bottom mounting)	24 V DC (marked with "+" a. "-")	9004840540826		<b>LSZD0006</b>
Size 2-12	DC			on request
<b>VARISTOR</b>				
Size 0, 2, 3	24-48 V AC; 24-70 V DC	9004840540543		<b>LSZ00001</b>
Size 0, 2, 3	127-240 V AC; 150-250 V DC	9004840540550		<b>LSZ00002</b>
<b>RC ELEMENT</b>				
Size 0	127-240 V AC; 150-250 V DC	9004840540567		<b>LSZ00003</b>
Size 2-3	127-240 V AC; 150-250 V DC	9004840540598		<b>LSZ00001</b>
Size 6-12	127-240 V AC; 150-250 V DC	9004840540611		LSZ60001

## CONNECTION CLIPS FOR CONTACTORS, SIZES 0-6



LSZ2W003



LSZ2D001

### SCHRACK INFO

- Kits include 2 clips for 1 contactor assembly (2 contactors)

DESCRIPTION	EAN CODE	AVAILABLE	ORDER NO.
For contactors 3/4-pole, size 0-0, without interlock	9004840554373		LSZ0W003
For contactors 3/4-pole, size 0-0, with interlock (clearance 10 mm)	9004840554380		<b>LSZ0W004</b>
For contactors 4-pole, size 2-2, with interlock (clearance 10 mm)	9004840541168		<b>LSZ2W002</b>
For contactors 4-pole, size 3-3, with interlock (clearance 10 mm)	9004840541472		<b>LSZ3W002</b>
For contactors 3-pole, size 2/3/6-2/3/6, with interlock (clearance 10 mm)	9004840541496		<b>LSZ2W003</b>
For contactors 3/4-pole, size 2/3, without interlock	9004840541410		LSZ2D001

## MECHANICAL LATCHING BLOCK, SIZES 0-2



LSZ00113

### SCHRACK INFO

- For plugging on contactor. Contactor remains ON after triggering even in case of a power outage until the latching block is reset with a 24 VAC/DC pulse.
- The latching block additionally has a mechanical ON and reset button
- For dimensions, see page 817.

DESCRIPTION	COIL VOLTAGE	EAN CODE	AVAILABLE	ORDER NO.
Size 0-2	24 V AC/DC	9004840540796		LSZ00113

## TERMINAL COVER, SIZE 2-14



LSZ6D001



LSZ6D002

### SCHRACK INFO

- Additional terminal covers for contactors with or without box terminal.

DESCRIPTION	EAN CODE	AVAILABLE	ORDER NO.
For size 2* (additional Cover, fastening on box terminal)	9004840540642		LSZ2D002
For size 3* (additional Cover, fastening on box terminal)	9004840540659		LSZ3D002
For size 6* for contactors with cable lug or rail connection (100 mm)	9004840540666		<b>LSZ6D001</b>
For size 6* short version for contactor assemblies (38 mm)	9004840540970		<b>LSZ6D002</b>
For size 10*/12* for contactors with cable lug or rail connection (120 mm)	9004840540673		<b>LSZED001</b>
For size 10*/12* short version for contactor assemblies (42 mm)	9004840540987		<b>LSZED002</b>
For size 14* for contactors with cable lug or rail connection	9004840554397		<b>LSZHD001</b>

\* 2 pcs. required for each contactor



Order no. blue: on stock, usually ready for delivery on the day of order!