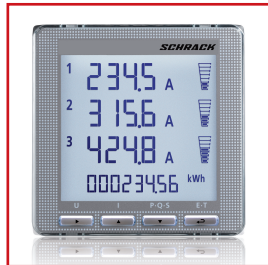
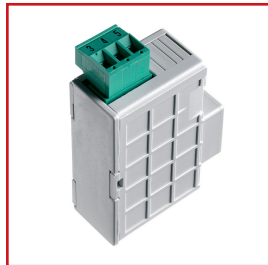


**DATA SHEET:**  
**INTERFACE MODULE SLOT M-BUS FOR NA96 AND NA96+**



NA96



MGF3900B

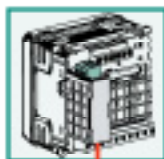
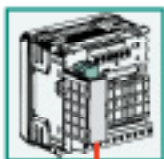
**SCHRACK-INFO**

The module MGF3900B in combination with the unit of the type NA96 made possible by the M-Bus interface, the reading of the kWh. Not calibratable!

NA96 AND NA96+

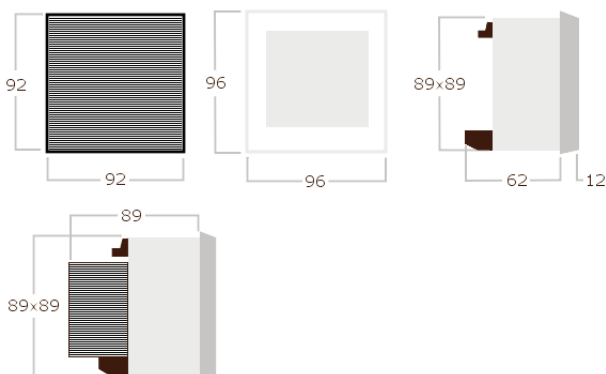


MGF3900B

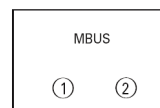


**M-BUS**

**DIMENSIONS**



**CONNECTION DIAGRAM**



**TECHNICAL DATA**

**M-BUS COMMUNICATION** – Galvanic separation between input and supply (NA96/NA96 +)

Standard:	EN1434-3
Transmission:	asynchronous serial
Protocol:	M-BUS
Number of bits:	8
Stop bit:	1

**PROGRAMMABLE PARAMETERS**

Address:	0...250
Baud rate:	300 - 600 - 1.200 - 2.400 - 4.800 - 9.600 bit/s

**AUXILIARY VOLTAGE** (The sizes depend on the compilation from NA96. / NA96 + and module)


Own consumption:	≤ 5VA
------------------	-------

**ELECTRICAL SAFETY** (The details depend on the compilation from NA96/NA96 MGF39000B + module)

Test voltage:	AC 2 kV rms 50Hz/1 min
Test circuit:	Measuring input, auxiliary voltage

**HOUSING**

Housing:	Plug-in module with connection for NA96
Maximum depth of housing:	81 mm (NA96 + Modul)
Connections:	Screw connections
Input terminal:	Stiff-wire max. 4,5mm <sup>2</sup> , Flexible wire max. 2,5mm <sup>2</sup>
Case material:	Self-extinguishing plastic
Weight:	30 g

DESCRIPTION	EAN-CODE	AVAILABLE	STORE	ORDER NO.
Plug-in module for M-Bus	9004840665994			<b>MGF3900B</b>