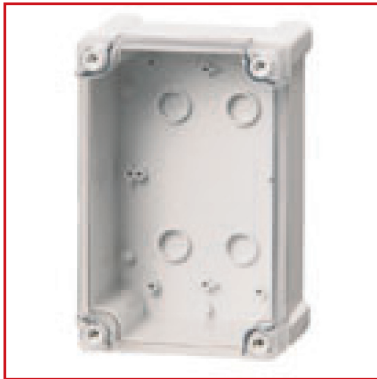


DATA SHEET: IG707014

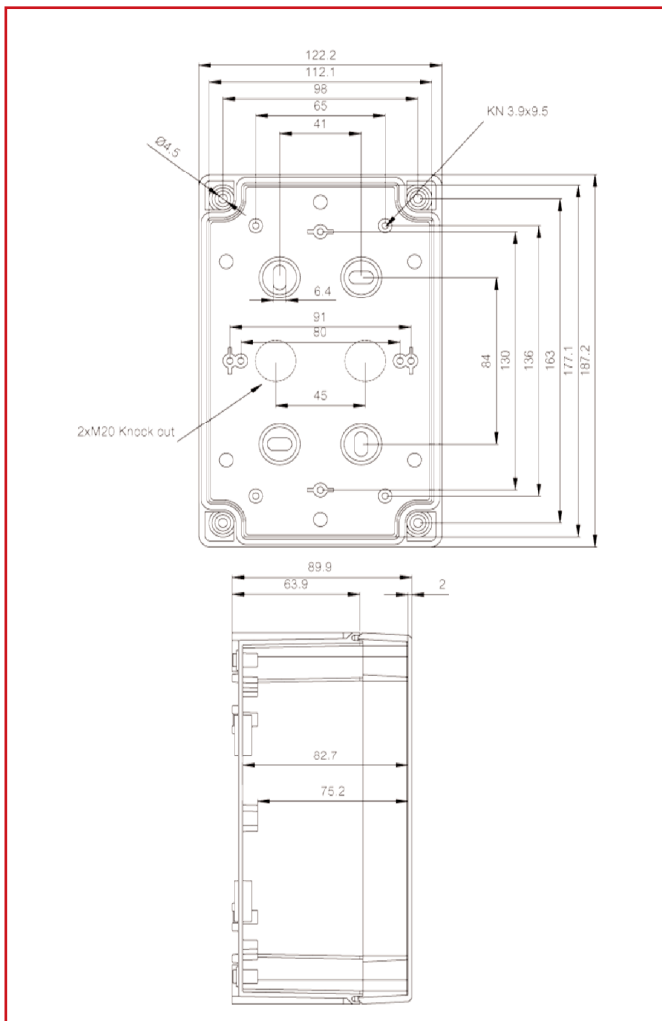
ABS HOUSING COVER TRANSP. W. HINGE, 187x122x90mm, RAL 7035



SCHRACK-INFO

Including: Base with PUR gasket and screws for mounting plate/DIN-rail, cover with polyamide cover screws and plastic hinges.

DIMENSIONS



TECHNICAL DATA

MATERIALS	
Materials:	ABS
Base colour:	RAL 7035
Cover screws material:	Polyamide
Cover screws colour:	Grey
Gasket material:	PUR
TEMPERATURES	
Min temperature °C (continuous):	-40
Max temperature °C (continuous):	60
RATING	
Ingress Protection (EN 60529):	IP 65
Impact Resistance (EN 62262):	IK 07
Electrical insulation:	Totally insulated
Halogen free (DIN/VDE 0472, Part 815):	Yes
Flammability Rating (UL 746 C 5):	UL 94 HB
Glow Wire Test (IEC 695-2-1) °C:	650
CERTIFICATES	
	Fimko, Gost R

DESCRIPTION	ORDER NO.
ABS housing cover transp. w. hinge, 187x122x90mm, RAL 7035	IG707014