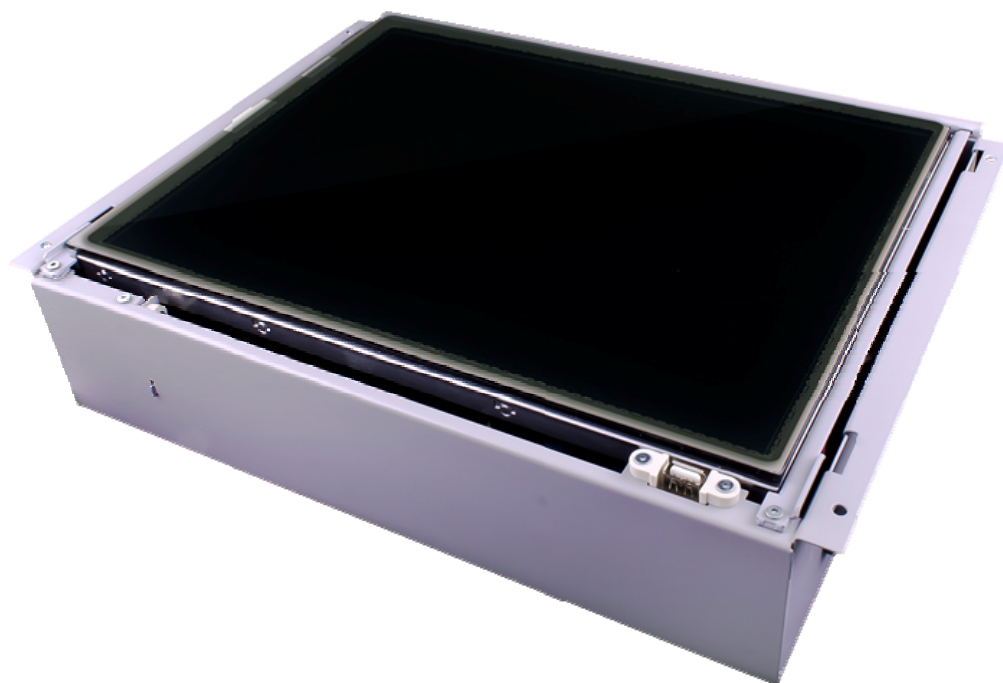


DATA SHEET



mH-TS12

Touch control panel with a 12" screen
of the F&Home system


F&Home

The 12-inch touch unit mH-TS12 is the central element of the system. It is installed outside the switchgear by building the casing of the panel into the wall. It is powered from 230 V mains and requires a separate connection from the main switchgear. It communicates with the system via the CAN line (cable 6 or 10m included). If there are plans to control via mobile devices or the Internet, lead the UTP cable of the home computer network into the panel. Due to the invasive nature of the installation (it is necessary to cut a hole in the wall), the location of the unit should be foreseen at the stage of building construction (before plastering). The following settings can be made with the touch panel:

- Pre-programming (arrangement of elements on the plan of the building)
- Programming of dimmer settings (hysteresis)
- Setting the device programmers (in an annual cycle every 15 minutes)
- Setting the heating and cooling programmers
- Setting the hysteresis of motor devices (roller blinds, blinds)
- Scene definition (can include light, roller blinds, temperature, activation of selected receivers)
- Setting the color of the interface (adjustment to individual needs)
- Uploading photos to the screen saver (electronic photo frame)
- GSM, Ethernet and Scene module configuration
- Software updates (using a flash drive)

Inputs / outputs

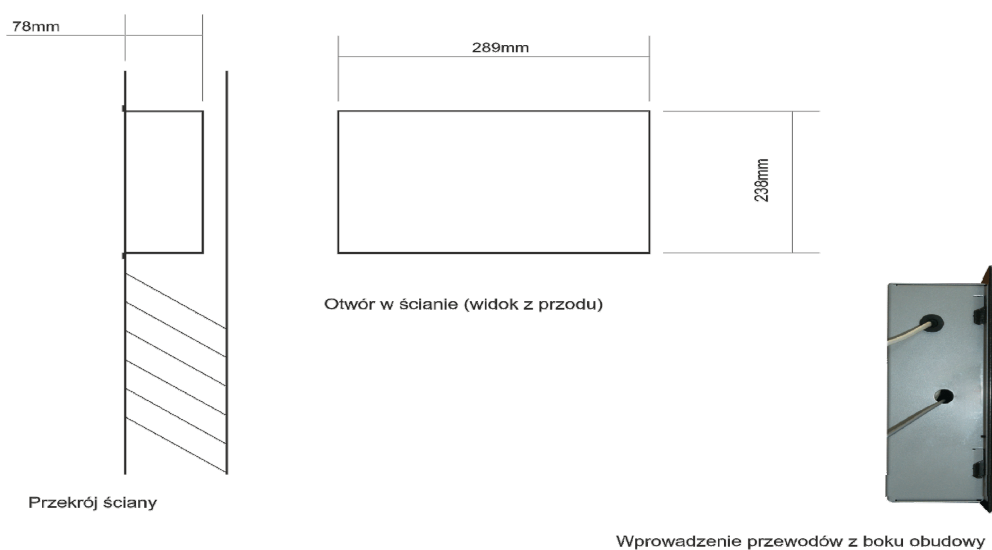
The touch panel has the following connectors:

- Power - for connecting 230 V power supply. A protective cable connection is required.
- CAN - 2 sockets for connection with system modules communicating via the CAN bus.
- LAN - 1 socket for LAN connection.
- USB - for connecting USB flash drive or wireless WLAN card.
- AUDIO - for connecting an external audio amplifier.

Power supply

The mH-TS12 module is supplied with 230 V DC voltage. It is very important to connect L, N and PE wires correctly. The power supply line should be powered and secured with independent protection in the switchgear.

The computer casing can be mounted in any type of wall (masonry, plasterboard) provided that the casing can be fitted to the required depth (minimum wall thickness is 9-10 cm). The steel box must be mounted in the wall after plastering and the bus cable (led from the switchgear) and the power supply cable (separate line protected with B6A or B10A fuse) must be led into the box. A recommended power cord is 3×1.5 mm². At long distances it is necessary to remember to separate the cables, for example, do not led the CAN and the power supply cables in one tube. Recommended panel installation height - about 160 cm from the floor. An additional UTP cable should be connected to the panel as a system connection to the LAN / Internet. If audio functions are to be used - an additional cable required to connect an audio amplifier should be led.



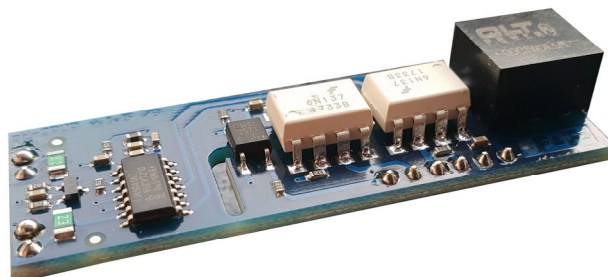
Przekrój ściany - Wall cross-section

Otwór w ścianie (widok z przodu) - Hole in the wall (front view)

Wprowadzenie przewodów z boku obudowy - Inserting wires on the side of the housing

mH-mb MODULE

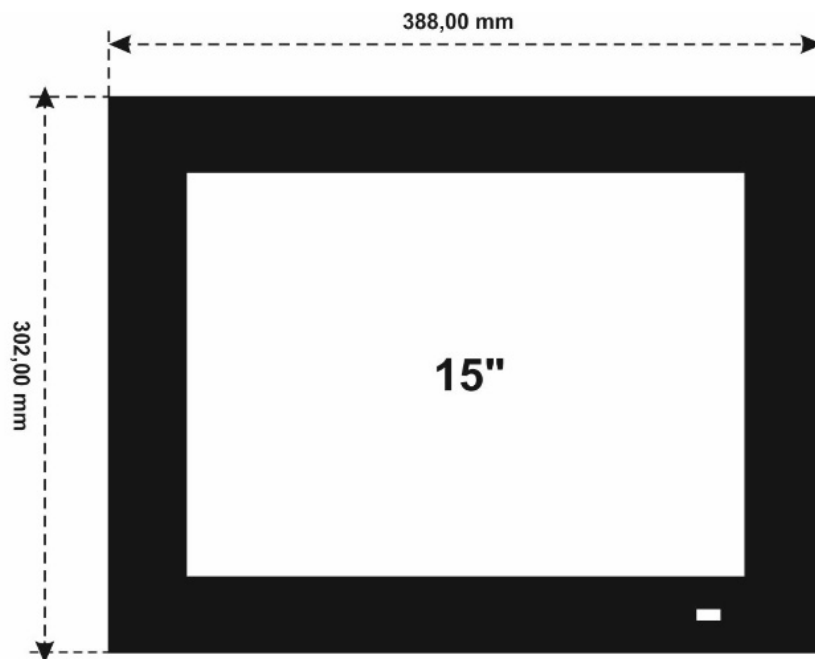
The mH-mb Megamaster module is an interface between the CAN bus (which connects the individual system modules) and the mH-TS12 computer. The module is installed inside the computers and is not available as a separately packaged product. There are two CAN sockets in the module and it can be connected temporarily - for example, when the panel is transient between two switchgears. The module is a replaceable element and in case of damage (for example, resulting from overvoltage on the CAN line) is subject to replacement.

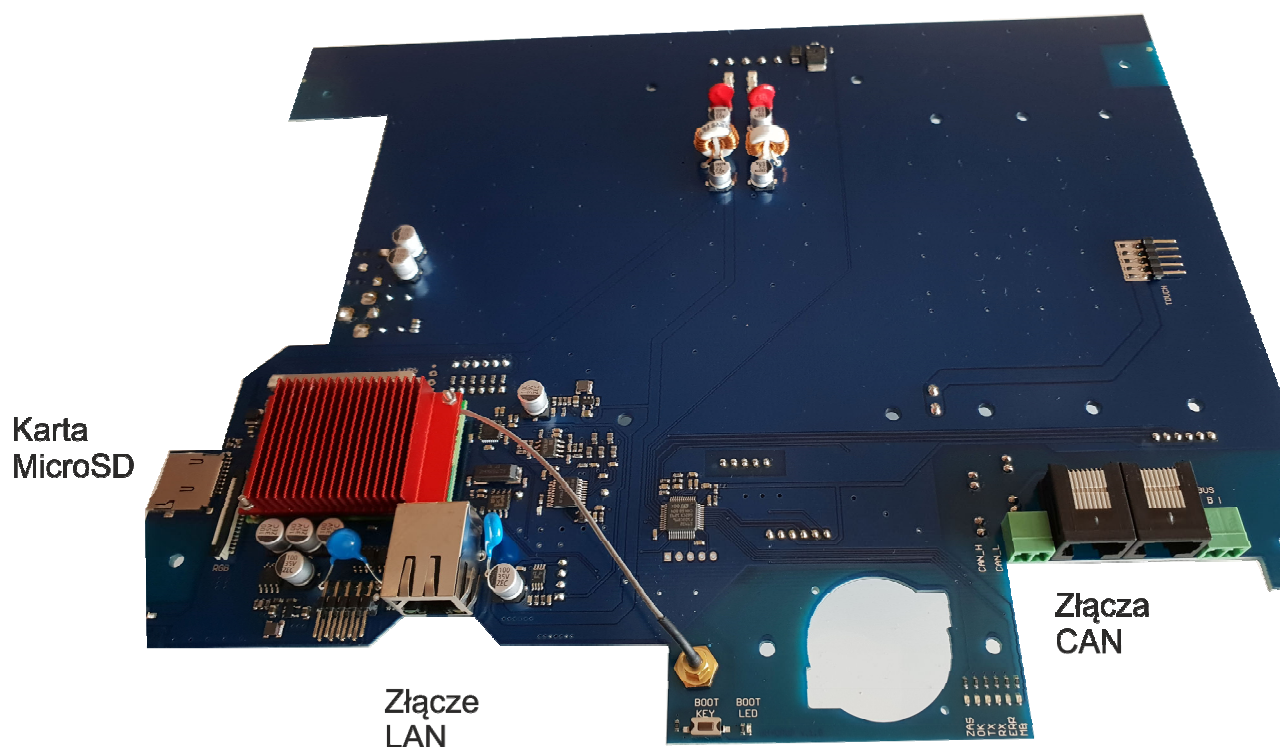


Frames

A powder-coated aluminum frame must be ordered for the touch panel (independent unit). Catalog marking of the frame - mH-TS12ALU.

Frame dimensions:





Mainboard and connectors of the panel

Technical data table

Module type	control panel
Rated supply voltage	230 V AC
Power supply voltage tolerance	-20%, +10%
Maximum power consumed from the mains	25 W
Main unit parameters	2x1 GHz CPU, 1GB RAM
Memory card	type: Micro SD, 16 GB
Screen	12", resolution 800x600
Storage temperature	-20 ^o C to +50 ^o C
Operating temperature	0 ^o C, +40 ^o C
Humidity	<=85% (without condensation or aggressive gases)
Dimensions	290 x 235 x 80 mm
Dimensions of the packaging	414 x 318 x 173 mm
Ingress protection	IP20
Operating position	horizontal
Enclosure type	wall-mounting (for building into the wall)
Net weight	3203 g
Gross weight (including packaging)	3809 g

WARNING

The method of connection is specified in this manual. Installation, connection and adjustment should be carried out by authorized electricians who are familiar with the operating instructions and the functions of the module.

The correct operation is affected by the way the module is transported, stored and used. Installation of the module is not recommended in the following cases: missing components, damage to the module or its deformation.

In case of malfunction, please contact the manufacturer.

