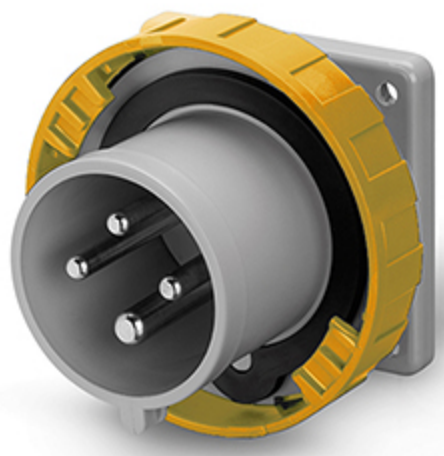


Product Technical Sheet

12 Aug 2021 06:55



248.1691

FLUSH MOUNTING APPLIANCE INLET

16A 3P+E 4h 100-130V 50Hz 60Hz 75X75MM
Screw terminals

Product Approvals

TECHDATA		STANDARDS AND LAWS	
Type of product	FLUSH MOUNTING APPLIANCE INLET	EN 60309-1 (1999)	[European Standard] Plugs, socket-outlets and couplers for industrial purposes. Part 1: General requirements
Commercial series	OPTIMA Series	EN 60309-2 (1999)	[European Standard] Plugs, socket-outlets and couplers for industrial purposes. Part 2: Dimensional interchangeability requirements for pin and contact-tube accessories of harmonized configurations
Synthetical description	FLUSH MOUNTING APPLIANCE INLET		
Mounting version	FLUSH MOUNTING	DIRECTIVE LOW VOLTAGE 2014/35 /UE	[European Directives] Low Voltage Directive
Rated current	16A		
Poles	3P+E		
Hour position	4h		
Rated voltage (range)	50-200V		
Rated voltage	100-130V		
Working frequency	60Hz		
Working frequency	50Hz		
Colour	YELLOW		
Material	THERMOPLASTIC		
Protection degree	Watertight		
Protection degree IP	IP66/IP67/IP69		
Protection degree IK	IK08		
Types of available outlets	STRAIGHT		
Terminals	Screw terminals		

Contact material	CuZn (brass)
Surface treatment contacts	Nickel-plated
Flange	75X75MM