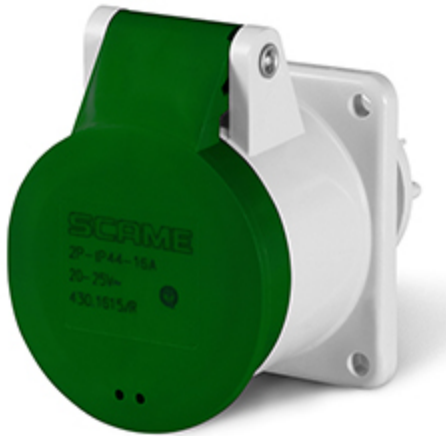


Product Technical Sheet

12 Aug 2021 07:47



430.16182/R

FLUSH-MOUNTING SOCKET

16A 3P 2h 20-25V 40-50V 300Hz 55X55MM

Screw terminals

Product Approvals

TECHDATA		STANDARDS AND LAWS	
Commercial series	IEC309 Series	EN 60309-1 (1999)	[European Standard] Plugs, socket-outlets and couplers for industrial purposes. Part 1: General requirements
Type of product	FLUSH-MOUNTING SOCKET	EN 60309-2 (1999)	[European Standard] Plugs, socket-outlets and couplers for industrial purposes. Part 2: Dimensional interchangeability requirements for pin and contact-tube accessories of harmonized configurations
Synthetical description	FLUSH-MOUNTING SOCKET		
Mounting version	FLUSH MOUNTING		
Rated current	16A		
Poles	3P		
Hour position	2h		
Rated voltage (range)	0-50V		
Rated voltage	40-50V		
Rated voltage	20-25V		
Working frequency	300Hz		
Colour	GREEN		
Material	THERMOPLASTIC		
Protection degree	Splash proof		
Protection degree IP	IP44		
Types of available outlets	STRAIGHT		
Terminals	Screw terminals		
Contact material	CuZn (brass)		

Flange

55X55MM