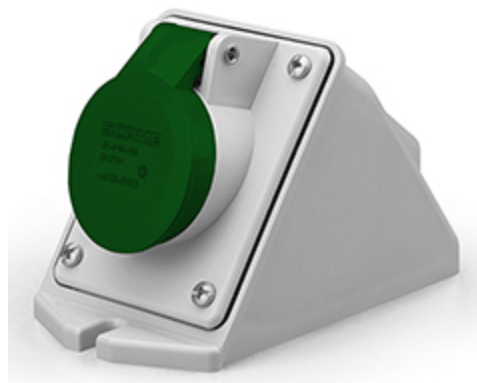


Product Technical Sheet

12 Aug 2021 07:50



530.032114

SURFACE MOUNTING SOCKET

32A 2P 3h 20-25V 40-50V 400Hz Screw
terminals

Product Approvals

TECHDATA		STANDARDS AND LAWS	
Commercial series	IEC309 Series	EN 60309-1 (1999)	[European Standard] Plugs, socket-outlets and couplers for industrial purposes. Part 1: General requirements
Type of product	SURFACE MOUNTING SOCKET	EN 60309-2 (1999)	[European Standard] Plugs, socket-outlets and couplers for industrial purposes. Part 2: Dimensional interchangeability requirements for pin and contact-tube accessories of harmonized configurations
Synthetical description	SURFACE MOUNTING SOCKET		
Mounting version	SURFACE MOUNTING		
Rated current	32A		
Poles	2P		
Hour position	3h		
Rated voltage (range)	0-50V		
Rated voltage	20-25V		
Rated voltage	40-50V		
Working frequency	400Hz		
Colour	GREEN		
Material	THERMOPLASTIC		
Protection degree	Splash proof		
Protection degree IP	IP44		
Types of available outlets	ANGLED		
Terminals	Screw terminals		
Contact material	CuZn (brass)		

Cable entry

M25X1,5