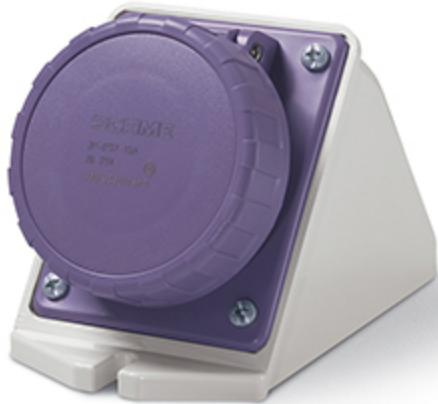


Product Technical Sheet

12 Aug 2021 07:51



535.01610

SURFACE MOUNTING SOCKET

16A 2P 20-25V 50Hz 60Hz Screw terminals

Product Approvals

| TECHDATA | | STANDARDS AND LAWS | |
|----------------------------|-------------------------|--------------------|---|
| Type of product | SURFACE MOUNTING SOCKET | EN 60309-1 (1999) | [European Standard] Plugs, socket-outlets and couplers for industrial purposes. Part 1: General requirements |
| Commercial series | IEC309 Series | EN 60309-2 (1999) | [European Standard] Plugs, socket-outlets and couplers for industrial purposes. Part 2: Dimensional interchangeability requirements for pin and contact-tube accessories of harmonized configurations |
| Synthetical description | SURFACE MOUNTING SOCKET | | |
| Mounting version | SURFACE MOUNTING | | |
| Rated current | 16A | | |
| Poles | 2P | | |
| Rated voltage (range) | 0-50V | | |
| Rated voltage | 20-25V | | |
| Working frequency | 60Hz | | |
| Working frequency | 50Hz | | |
| Colour | VIOLET | | |
| Material | THERMOPLASTIC | | |
| Protection degree | Watertight | | |
| Protection degree IP | IP66/IP67 | | |
| Types of available outlets | ANGLED | | |
| Terminals | Screw terminals | | |
| Contact material | CuZn (brass) | | |
| Cable entry | M25X1,5 | | |

