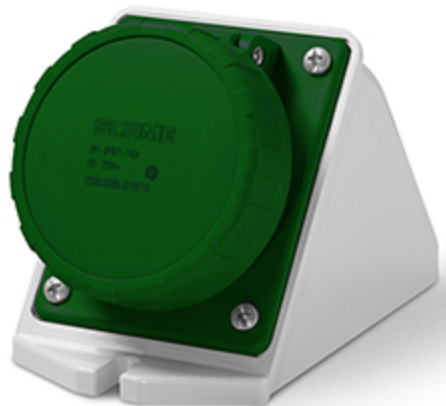


## Product Technical Sheet

12 Aug 2021 07:51



# 535.016112

## SURFACE MOUNTING SOCKET

16A 2P 2h 20-25V 40-50V 300Hz Screw  
terminals

Product Approvals

TECHDATA		STANDARDS AND LAWS	
Commercial series	IEC309 Series	EN 60309-1 (1999)	[European Standard] Plugs, socket-outlets and couplers for industrial purposes. Part 1: General requirements
Type of product	SURFACE MOUNTING SOCKET	EN 60309-2 (1999)	[European Standard] Plugs, socket-outlets and couplers for industrial purposes. Part 2: Dimensional interchangeability requirements for pin and contact-tube accessories of harmonized configurations
Synthetical description	SURFACE MOUNTING SOCKET		
Mounting version	SURFACE MOUNTING		
Rated current	16A		
Poles	2P		
Hour position	2h		
Rated voltage (range)	0-50V		
Rated voltage	40-50V		
Rated voltage	20-25V		
Working frequency	300Hz		
Colour	GREEN		
Material	THERMOPLASTIC		
Protection degree	Watertight		
Protection degree IP	IP66/IP67		
Types of available outlets	ANGLED		
Terminals	Screw terminals		
Contact material	CuZn (brass)		

Cable entry

M25X1,5