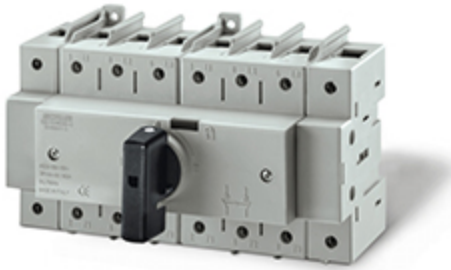


# 590.YA1603B-C

## CHANGE OVER SWITCH

160A 3P C3 BOX (B)



Product Approvals

TECHDATA		STANDARDS AND LAWS	
Type of product	CHANGE OVER SWITCH	EN 60947-3 (2009)	[European Standard] Low-voltage switchgear and controlgear - Part 3: Switches, disconnectors, switch-disconnectors and fuse-combination units
Commercial series	COMMAND Series		
Synthetical description	CHANGE OVER SWITCH	EN 60947-1 (2007)	[European Standard] Low-voltage switchgear and controlgear - Part 1: General rules
Material	THERMOPLASTIC	EN 60947-1/A1 (2011)	[European Standard] Low-voltage switchgear and controlgear - Part 1: General rules
Type	BOX (B)	EN 60947-3/A1 (2012)	[European Standard] Low-voltage switchgear and controlgear Part 3: Switches, disconnectors, switch-disconnectors and fuse-combination units
Rated current	160A	EN 60947-1/A2 (2014)	[European Standard] Low-voltage switchgear and controlgear - Part 1: General rules
Poles	3P	EN 60947-3/A2 (2015)	[European Standard] Low-voltage switchgear and controlgear Part 3: Switches, disconnectors, switch-disconnectors and fuse-combination units
Switch size	C3		
Rated voltage	690V		
		DIRECTIVE LOW VOLTAGE 2014/35 /UE	[European Directives] Low Voltage Directive