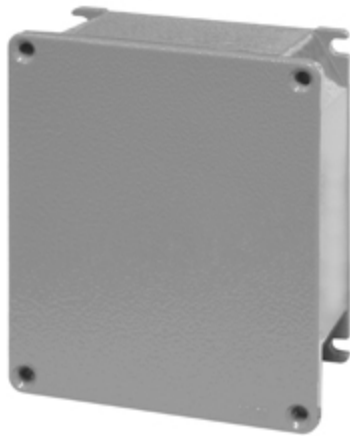


Product Technical Sheet

12 Aug 2021 10:40



653.9002

JUNCTION BOX

166x142x64mm IP66 GREY DIE-CAST ALUMINIUM

Product Approvals

TECHDATA		STANDARDS AND LAWS	
Commercial series	ALUX	EN 60670-22 (2006)	[European Standard] Boxes and enclosures for electrical accessories for household and similar fixed electrical installations -- Part 22: Particular requirements for connecting boxes and enclosures
Type of product	JUNCTION BOX		
Synthetical description	JUNCTION BOX		
Protection degree	Splash proof	EN 60079-0 (2012)	[European Standard] Explosive atmospheres. General requirements.
Protection degree IP	IP66	EN 60079-31 (2014)	[European Standard] Explosive atmospheres. Equipment dust ignition protection by enclosure "t"
Material	DIE-CAST ALUMINIUM	EN 60079-0/A11 (2013)	[European Standard] Explosive atmospheres. General requirements.
Colour	GREY	EN 60079-15 (2010)	[European Standard] Electrical apparatus for explosive gas atmospheres. Construction, test and marking of type of protection "n" electrical apparatus.
Dimensions	166x142x64mm		
Group and categories EX	II 3GD	DIRECTIVE ATEX 2014/34/UE	[European Directives] Atmosphere Explosive
Modo protezione gas	Ex nA IIC Gc		
Dust protection	Ex tc IIIC Dc IP66		
Ambient temperature Ta min	-20 °C		
Ambient temperature Ta max	60 °C		