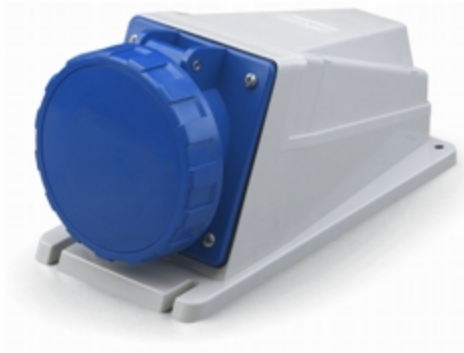


# 515.M12554

## SURFACE MOUNTING SOCKET

125A 3P+E 9h 200-250V 50Hz 60Hz Screw terminals



Product Approvals

TECHDATA		STANDARDS AND LAWS	
Commercial series	OPTIMA Series	EN 60309-1 (1999)	[European Standard] Plugs, socket-outlets and couplers for industrial purposes. Part 1: General requirements
Type of product	SURFACE MOUNTING SOCKET	EN 60309-2 (1999)	[European Standard] Plugs, socket-outlets and couplers for industrial purposes. Part 2: Dimensional interchangeability requirements for pin and contact-tube accessories of harmonized configurations
Synthetical description	SURFACE MOUNTING SOCKET		
Mounting version	FLUSH/SURFACE MOUNTING	DIRECTIVE LOW VOLTAGE 2014/35 /UE	[European Directives] Low Voltage Directive
Rated current	125A		
Poles	3P+E		
Hour position	9h		
Rated voltage (range)	200-250V		
Rated voltage	200-250V		
Working frequency	60Hz		
Working frequency	50Hz		
Colour	BLUE		
Material	THERMOPLASTIC		
Protection degree	Watertight		
Protection degree IP	IP66/IP67/IP69		
Protection degree IK	IK08		
Types of available outlets	ANGLED		

Terminals	Screw terminals
Contact material	CuZn (brass)
Cable entry	M63X1,5