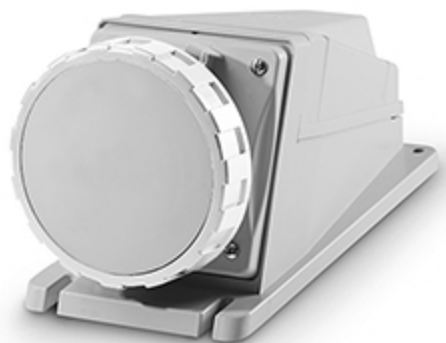


# 515.63538

## SURFACE MOUNTING SOCKET

63A 2P+E 8h >250V DC Screw terminals



Product Approvals

TECHDATA		STANDARDS AND LAWS	
Type of product	SURFACE MOUNTING SOCKET	EN 60309-1 (1999)	[European Standard] Plugs, socket-outlets and couplers for industrial purposes. Part 1: General requirements
Commercial series	OPTIMA Series	EN 60309-2 (1999)	[European Standard] Plugs, socket-outlets and couplers for industrial purposes. Part 2: Dimensional interchangeability requirements for pin and contact-tube accessories of harmonized configurations
Synthetical description	SURFACE MOUNTING SOCKET		
Mounting version	FLUSH/SURFACE MOUNTING	DIRECTIVE LOW VOLTAGE 2014/35 /UE	[European Directives] Low Voltage Directive
Rated current	63A		
Poles	2P+E		
Hour position	8h		
Rated voltage (range)	250-400V		
Rated voltage	>250V		
Working frequency	DC		
Colour	GREY		
Material	THERMOPLASTIC		
Material			
Protection degree	Watertight		
Protection degree IP	IP66/IP67		
Protection degree IK	IK08		
Types of available outlets	ANGLED		

Terminals	Screw terminals
Contact material	CuZn (brass)
Cable entry	PG 29
Cable entry	
Cable	
Working temperature	
Lamp holder	