

Corp de iluminat cu montaj aparent sau suspendat, tip:
Luminaire with visible mounting or suspended mounting, type:

FIPAD-06
30LEDG2

Instructiuni de montare si exploatare

Mounting and operating instructions

Instructions de montage

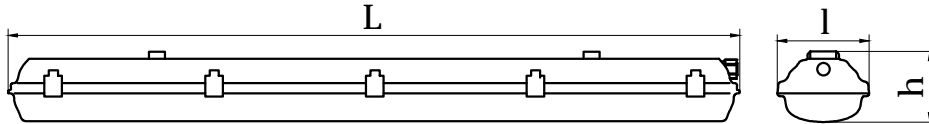
Montageanleitung



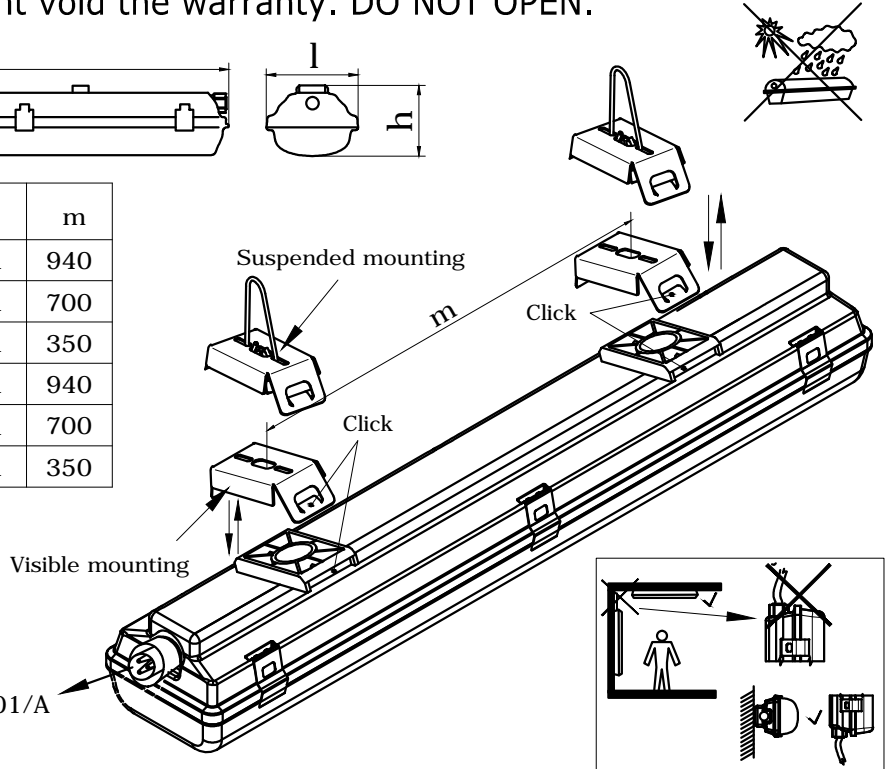
FIPAD-06-2x1R5Bx30LEDG2	●		-20...+45°C	~3,70	230V	36,6	66	30LED	●	●	SR EN 60598-1 SR EN 60598-2-1
FIPAD-06-2x1R4Bx30LEDG2	●		-20...+45°C	~2,70	230V	28,5	66	30LED	●	●	
FIPAD-06-2x1R2Bx30LEDG2	●		-20...+45°C	~1,60	230V	12	66	30LED	●	●	
FIPAD-06-1x1R5Bx30LEDG2	●		-20...+45°C	~3,00	230V	28	66	30LED	●	●	
FIPAD-06-1x1R4Bx30LEDG2	●		-20...+45°C	~2,30	230V	16	66	30LED	●	●	
FIPAD-06-1x1R2Bx30LEDG2	●		-20...+45°C	~1,50	230V	5,1	66	30LED	●	●	

ATENȚIE! ATTENTION!

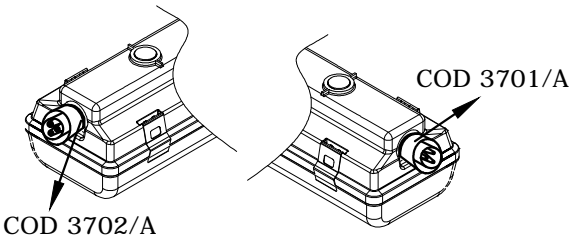
Deschiderea compartimentului optic duce la pierderea garanției. NU SE DESCHIDE!
Opening the optical compartment void the warranty. DO NOT OPEN.



Tip/ Type	L	l	h	m
FIPAD-06-1x1R5Bx30LEDG2	1572	95	111	940
FIPAD-06-1x1R4Bx30LEDG2	1272	95	111	700
FIPAD-06-1x1R2Bx30LEDG2	662	95	111	350
FIPAD-06-2x1R5Bx30LEDG2	1572	145	111	940
FIPAD-06-2x1R4Bx30LEDG2	1272	145	111	700
FIPAD-06-2x1R2Bx30LEDG2	662	145	111	350

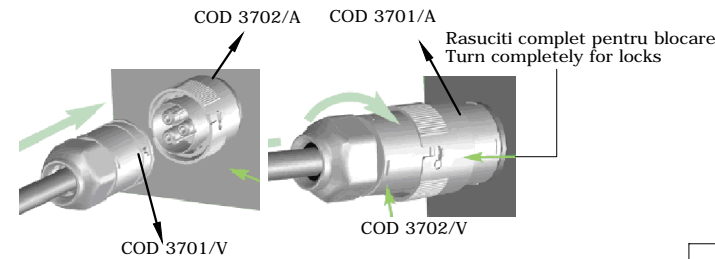


conexiune
cu conectori STUCCHI/
connexion
with STUCCHI connectors

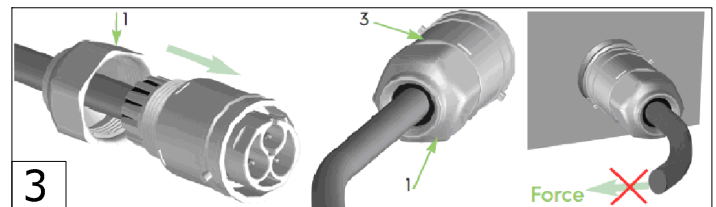
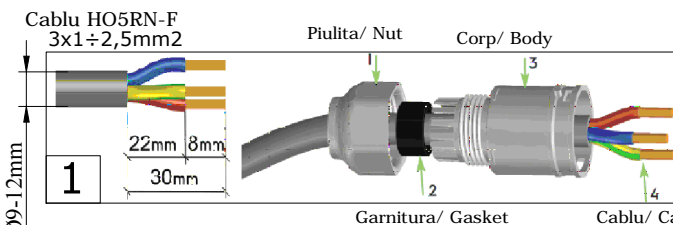
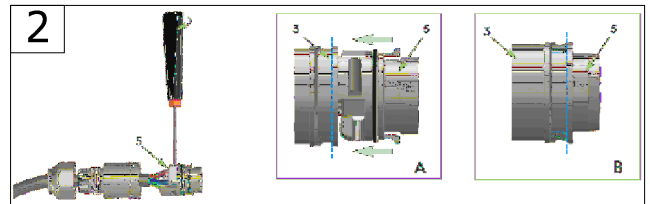


COD 3702/A


COD 3701/A



Borne cu surub/ Screw terminals (5)



Atentie! Toate operatiile de montare si intretinere in exploatare se vor efectua in lipsa tensiunii electrice si numai de catre persoane autorizate!
Pentru montajul in linie se vor utiliza doar corpuri de iluminat cu cablajul interior pre-instalat!; 1,5mm2 (Imax=9A); 2,5mm2 (Imax=14A)
Attention! All installation and maintenance operations will be performed in absence of operating voltage and only by authorized personnel!
For installation in line, use only luminaires with wiring pre-installed!; 1,5mm2 (Imax=9A); 2,5mm2 (Imax=14A)

 Acest simbol aplicat pe produs este in conformitate cu Directiva Europeana 2002/96/CE, privind deseurile echipamentelor electrice si electronice rezultate din dezmembrarea produselor uzate si indica faptul ca produsul face obiectul unei colectari separate . Pentru prevenirea distrugerii mediului inconjurator si sanatatii umane, va rugam sa nu eliminati acest produs ca deșeu nesortat. In vederea unei reciclari sigure din punct de vedere al mediului, utilizatorii de echipamente electrice si electronice trebuie sa predea deseurile acestora la punctele de colectare selectiva special amenajate de catre autoritatile administratiei publice locale.
This symbol applied on the product complies with European Directive 2002/96/EC, regarding electrical and electronic waste products resulting from the dismantling and indicates that the product has a separate collection. To prevent the damages on the environment and human health, do not dispose of this product as unsorted waste. For a safe recycling, the electric and electronic equipment end-users must contact the local authorities for details concerning a safe recycling.