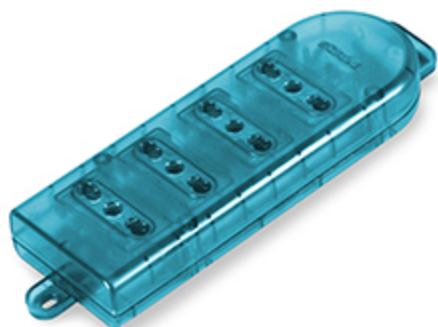


## Product Technical Sheet

12 Aug 2021 13:21



# 160.223/T

## MULTI SOCKET

TRANS. TURQUOISE 4x2P+E-16A-(P17/11)

Product Approvals

TECHDATA		STANDARDS AND LAWS	
Commercial series	BLUELINE Series	CEI 23-50 (2007)	[Italian Standard] Prese a spina per usi domestici e similari Parte 1: Prescrizioni generali
Type of product	MULTI SOCKET	CEI 23-50 V1 (2008)	[Italian Standard] Prese a spina per usi domestici e similari. Parte 1: Prescrizioni generali
Synthetical description	MULTI SOCKET	CEI 23-50/V2 (2011)	[Italian Standard] Prese a spina per usi domestici e similari. Parte 1: Prescrizioni generali
Rated current	16A	CEI 23-50 V3 (2015-05)	[Italian Standard] Prese a spina per usi domestici e similari. Parte 1: Prescrizioni generali
Poles	2P+E	CEI 23-50 V4 (2015-08)	[Italian Standard] Prese a spina per usi domestici e similari. Parte 1: Prescrizioni generali
Rated voltage	250V	DIRECTIVE RoHS 2011/65/EU	[European Law] Restriction of the use of certain hazardous substances in electrical and electronic equipment
Abbreviation of individuation	P11/P17		
No. of available outlets	4 NR		
Type of sockets	4x2P+E-16A-(P17/11)		
Material	ENGINEERING PLASTIC		
Colour	TRANS. TURQUOISE		