

90040/90041/90042/090043/90044

Standards: EN 60598-1:2009+A11:2009, EN 60598-2-2:1999+A1:1997, EN 61347-2-13:2006, EN 62384:2006+A1:2009

EN

Waterproof wall recessed light fittings (IP54), equipped with SMD LEDs.
Housing and recessed box in plastic.
Opal polycarbonate diffuser with electrostatically painted stainless steel cover.
Constant current LED driver included.
Range of applications
Range of applications
Indoor and outdoor decorative lighting.

RO

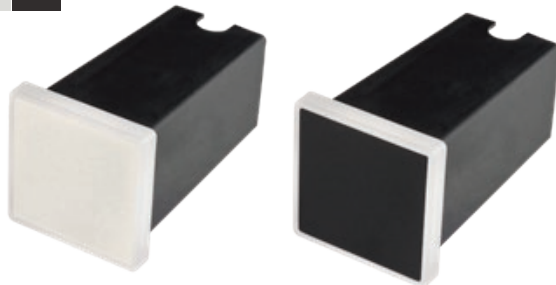
Corpuri de iluminat etanșe (IP54), de încastrat în perete, echipate cu un LED-uri SMD.
Corpul și doza de încastrare din plastic.
Dispersor din policarbonat opal cu mască decorativă din inox, vopsită în câmp electrostatic.
Alimentatorul în curent constant inclus.
Aplicații
Iluminatul decorativ în interior sau exterior.

IT

Apparecchi da incasso a parete, protetti contro polvere e umidità (IP54), equipaggiato con SMD LED.
Corpo e scatola da incasso in plastica.
Diffusore in policarbonato opalino con mascherina decorativa in acciaio inox, verniciata a polveri.
Alimentatore a corrente costante incluso.
Campi di applicazione
Illuminazione decorativa per interni ed esterni.

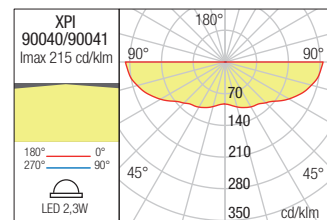
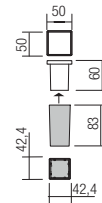
FINISHING AVAILABLE

MWH MBK



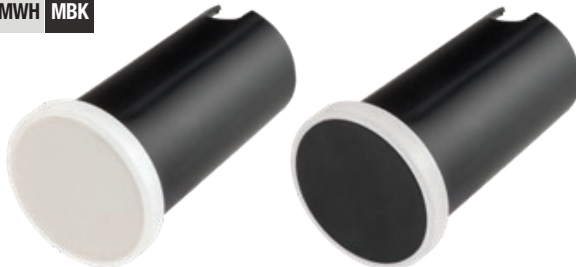
90040

90041



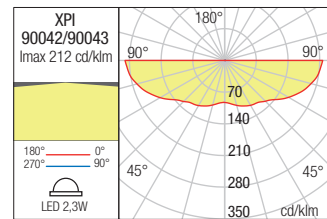
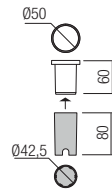
FINISHING AVAILABLE

MWH MBK



90042

90043

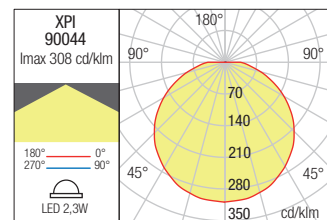
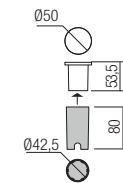


FINISHING AVAILABLE

OPL



90044



Code	Finishing	LED type	Power	Input current	Driver	LED flux	System flux	C T	CRI	Optics C		Weight	
90040	MWH	SMD 2835	2,3W	220-240V AC	Included	240 lm	40 lm	3000K	80	120°		42,4x42,4 mm	0,28 kg
90041	MBK	SMD 2835	2,3W	220-240V AC	Included	240 lm	40 lm	3000K	80	120°		42,4x42,4 mm	0,28 kg
90042	MWH	SMD 2835	2,3W	220-240V AC	Included	240 lm	40 lm	3000K	80	120°		Ø42,5 mm	0,28 kg
90043	MBK	SMD 2835	2,3W	220-240V AC	Included	240 lm	40 lm	3000K	80	120°		Ø42,5 mm	0,28 kg
90044	OPL	SMD 2835	2,3W	220-240V AC	Included	240 lm	120 lm	3000K	80	120°		Ø42,5 mm	0,28 kg