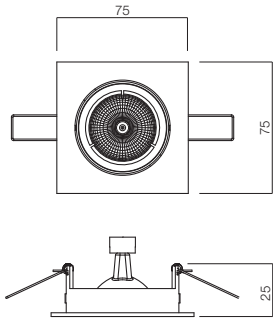


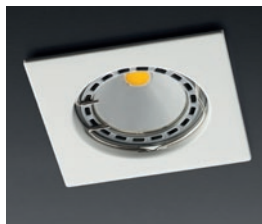
# MT 122



RECESSED DOWNLIGHTS  
SPOTURI ÎNCASTRATE  
INCASSI



White (WH)



White (WH)



Nickel mat (NM)



Antique brass (AB)



Red antique brass (RAB)



Pearl chrome/Chrome (PC/CH)

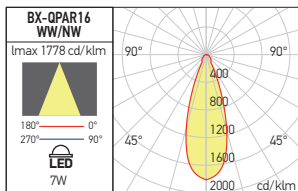



Gun metal/Chrome (GM/CH)



Chrome (CH)

## PHOTOMETRIC DATA



Code	Bulb type	Socket	Power	Input voltage	Electric gear		Weight
<b>70330 MWH</b>	QR-CB51 / LED	GU5.3	1x50W max.	12V AC	Not included	Ø60 mm	0,06 kg
<b>70328 CH</b>	QR-CB51 / LED	GU5.3	1x50W max.	12V AC	Not included	Ø60 mm	0,06 kg
<b>70331 NM</b>	QR-CB51 / LED	GU5.3	1x50W max.	12V AC	Not included	Ø60 mm	0,06 kg
<b>70334 AB</b>	QR-CB51 / LED	GU5.3	1x50W max.	12V AC	Not included	Ø60 mm	0,06 kg
<b>70333 RAB</b>	QR-CB51 / LED	GU5.3	1x50W max.	12V AC	Not included	Ø60 mm	0,06 kg
<b>70332 PC/CH</b>	QR-CB51 / LED	GU5.3	1x50W max.	12V AC	Not included	Ø60 mm	0,06 kg
<b>70329 GM/CH</b>	QR-CB51 / LED	GU5.3	1x50W max.	12V AC	Not included	Ø60 mm	0,06 kg

## EN

Recessed square light fittings, fixed, for low voltage (12V) halogen lamps, QR-CB51, for LED modules or LED bulbs with the same dimensions and type of socket.

## RO

Corpuri de iluminat pătrate incastrate, fixe, pentru lămpi halogen la joasă tensiune (12V) tip QR-CB51, pentru module cu LED-uri sau pentru becuri cu LED-uri cu aceleași dimensiuni și tip de soclu.

## IT

Faretti da incasso quadrati fissi, per lampade alogene a bassa tensione (12V) QR-CB51, per moduli a LED o per lampadine a LED con le stesse dimensioni e tipo di attacco.