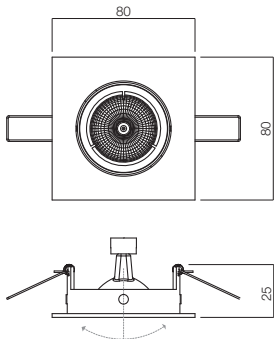
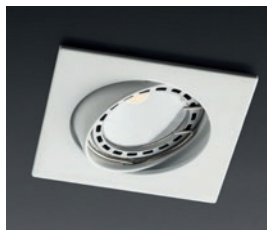


RECESSED DOWNLIGHTS  
SPOTURI ÎNCASTRATE  
INCASSI



White (WH)



White (WH)



Nickel mat (NM)



Antique brass (AB)



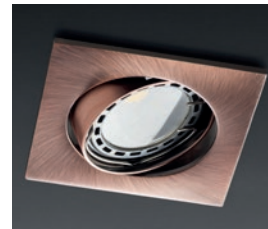
Pearl chrome/Chrome (PC/CH)



Gun metal/Chrome (GM/CH)

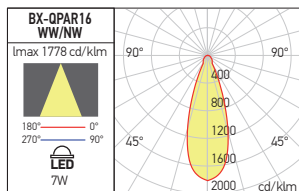


Chrome (CH)



Red antique brass (RAB)

## PHOTOMETRIC DATA



Code	Bulbs type	Socket	Power	Input voltage	Electric gear		Weight
<b>70337 MWH</b>	QR-CB51 / LED	GU5.3	1x50W max.	12V AC	Not included	Ø74 mm	0,09 kg
<b>70335 CH</b>	QR-CB51 / LED	GU5.3	1x50W max.	12V AC	Not included	Ø74 mm	0,09 kg
<b>70338 NM</b>	QR-CB51 / LED	GU5.3	1x50W max.	12V AC	Not included	Ø74 mm	0,09 kg
<b>70341 AB</b>	QR-CB51 / LED	GU5.3	1x50W max.	12V AC	Not included	Ø74 mm	0,09 kg
<b>70340 RAB</b>	QR-CB51 / LED	GU5.3	1x50W max.	12V AC	Not included	Ø74 mm	0,09 kg
<b>70339 PC/CH</b>	QR-CB51 / LED	GU5.3	1x50W max.	12V AC	Not included	Ø74 mm	0,09 kg
<b>70336 GM/CH</b>	QR-CB51 / LED	GU5.3	1x50W max.	12V AC	Not included	Ø74 mm	0,09 kg

## EN

Recessed square light fittings, adjustable, for low voltage (12V) halogen lamps, QR-CB51, for LED modules or LED bulbs with the same dimensions and type of socket.

## RO

Corpuri de iluminat pătrate încastrate, orientabile, pentru lămpi halogen la joasă tensiune (12V) tip QR-CB51, pentru module cu LED-uri sau pentru becuri cu LED-uri cu aceleași dimensiuni și tip de soclu.

## IT

Faretti da incasso quadrati orientabili, per lampade alogene a bassa tensione (12V) QR-CB51, per moduli a LED o per lampadine a LED con le stesse dimensioni e tipo di attacco.