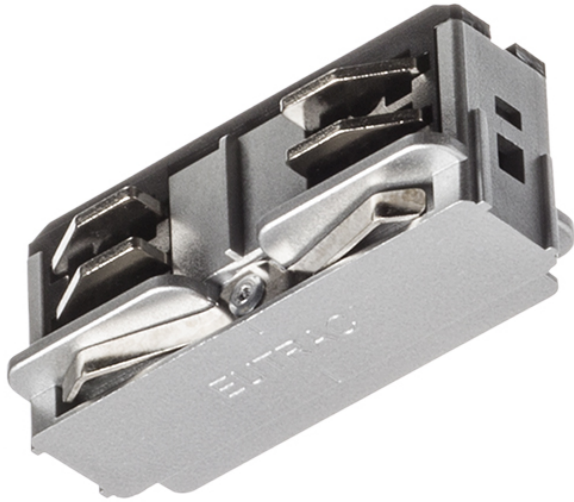


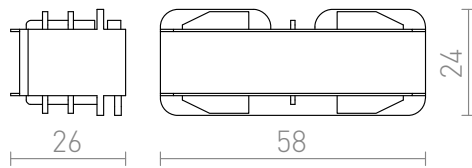
# EUTRAC straight joint



Straight joint for EUTRAC 3-circuit tracks. For structural reasons, a mechanical bracket (R11354, R11355 or R11356) is required for suspension installations. Maximum load 16A.

RP EUR incl. VAT

<b>R11317</b>	EUTRAC straight joint, electrical white 230V	<b>18,00</b>
<b>R11318</b>	EUTRAC straight joint, electrical black 230V	<b>18,00</b>
<b>R11319</b>	EUTRAC straight joint, electrical silver grey 230V	<b>22,00</b>



 3D model

 manual