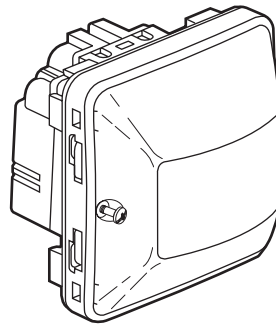


**Plexo™**  
**Automatic switches**

Cat. No(s): 0 695 20/22

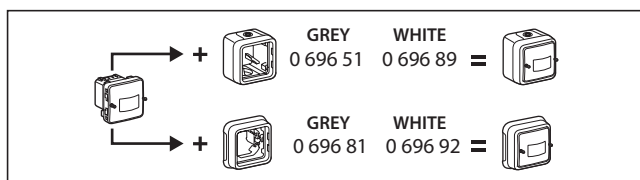


**1. USE**

Weatherproof wiring system designed for residential and professional technical locations (garages, cellars, car parks, workshops and industrial kitchens, etc) as well as for outdoor applications (patios, gardens, camp sites, etc).  
 Automatic switches with or without neutral with infrared detection.

**2. RANGE**

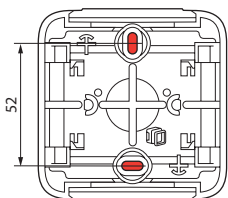
	Cat. Nos	Description
<b>COMPOSABLE</b> 	0 695 20	Automatic switch without neutral - 2 wires 230 V - 50 Hz
	0 695 22	Automatic switch with neutral - 3 wires 230 V - 50 Hz



**3. INSTALLATION**

**3.1 Surface mounting**

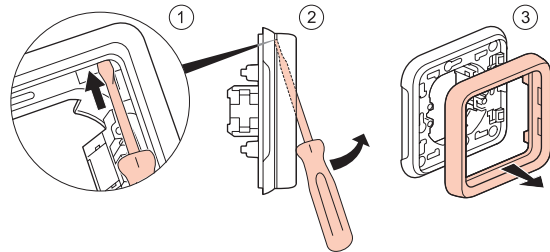
By screwing back box onto support using two Ø 3 mm - Ø 4 mm max. screws.



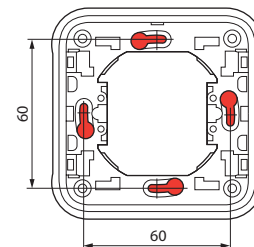
**3. INSTALLATION (continued)**

**3.2 Flush mounting**

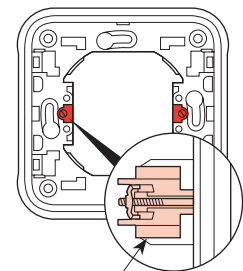
Unclip plate



With screws on flush-mounting box



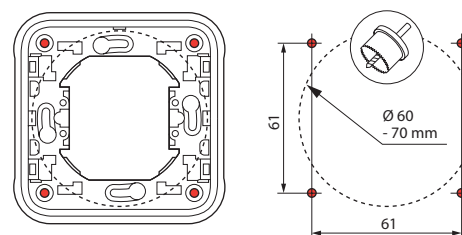
With claws on flush-mounting box



Claws can be fitted:  
 Cat. No. 0 849 00  
 or  
 Cat. No. 0 849 01 (long claws)

On solid faceplate using four Ø 4 mm screws.

Drill support material (diameter 60 - 70 mm) using hole saw or hole punch.

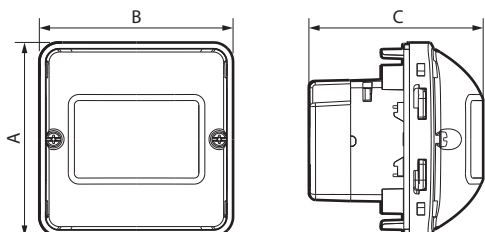


#### 4. CONNECTION

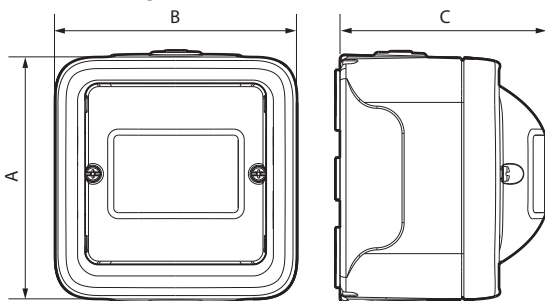
Terminals: with screws  
Terminal capacity: 2 x 1.5 mm<sup>2</sup> or 1 x 2.5 mm<sup>2</sup>  
Screwdriver: flat 3.5 mm

#### 5. DIMENSIONS (mm)

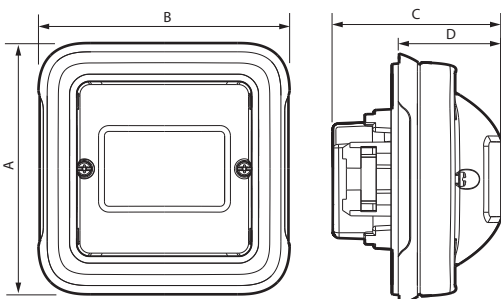
Composable



Surface mounting



Flush-mounting



	A	B	C	D
Composable	64	64	58	-
Surface mounting	80	80	68	-
Flush mounting	86	86	58	35

#### 6. TECHNICAL CHARACTERISTICS

■ **6.1 Mechanical characteristics**  
Protection against solid/bodies liquids: IP 55  
Impact test: IK 07

■ **6.2 Material characteristics**  
Colour: Grey/White  
Material: - Box: PP  
          - Plate: ABS  
          - Cover: PE  
          - Mechanism: PC

Self-extinguishing:  
+ 850° C / 30 s for insulating parts holding live parts in place.  
+ 650° C / 30 s for other parts made of insulating material.

UV resistant:  
No notable alteration following the 7 day test with 550 W/m<sup>2</sup> power lighting (Colorimetric measurement using lab method).

Resistance to salt spray:  
7 days (168 hrs)

■ **6.3 Electrical characteristics**  
Voltage: 230 V~  
Frequency: 50 Hz

■ **6.4 Climatic characteristics**  
Storage temperature: - 25° C to + 60° C  
Use temperature: - 5° C to + 35° C

#### 7. MAINTENANCE

Clean the surface with a dry cloth or cloth soaked in soapy water.  
Do not use: acetone, tar removing cleaning agents or trichlorethylene.

**Attention:** An initial test is required before using specific cleaning products.

#### 8. STANDARDS AND APPROVALS

Compliance with standards of installation and manufacturing.  
Refer to e. catalogue.