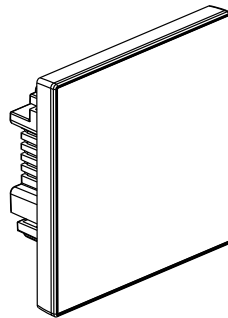


Galion™ Black touch plate push+DND/CUR sign

Cat. No(s): 2 824 17/17m
K8/H251-HK K8/H252-HK



2 824 17/17m
K8/H251-HK K8/H252-HK

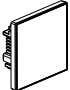
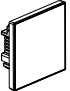
CONTENTS

1. Use.....	1
2. Range.....	1
3. Preparation.....	1
4. Overall dimensions.....	1/2
5. Connection.....	2
6. Technical characteristics.....	2
7. Cleaning.....	2
8. Conformity - Approvals.....	2

1. USE

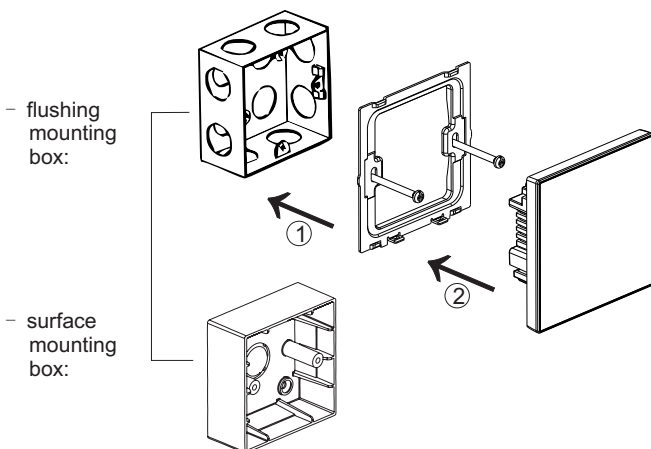
To ring and to display the messages: "Do not disturb" or "Please clean up my room".
(Supplied with M3.5 screws for BS boxes. Flush mounting or Surface mounting.)

2. RANGE

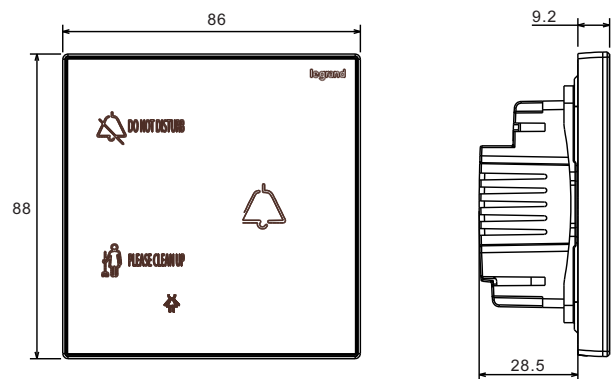
	Designation	Cat. No.	Weight (g)	Characteristics
	Black touch plate push+DND/CUR sign	2 824 17/17m K8/H251-HK	99.8	3 A - 220VAC
	Black touch plate push+DND/CUR +wait sign	K8/H252-HK	99.8	3 A - 220VAC

3. PREPARATION

3.1 General preparation



4. OVERALL DIMENSIONS



Profile Size: 86 × 88 mm
Distance of installation hole: 60.3 mm
Minimum depth of the box > 35 mm

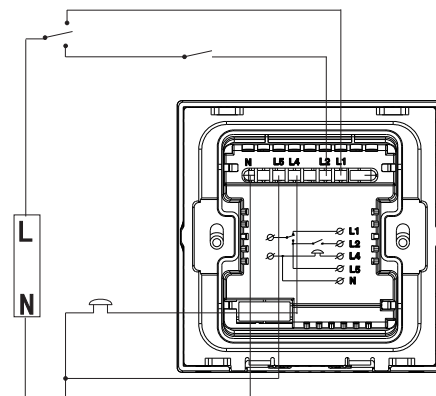
5. CONNECTION

5.1 Terminals

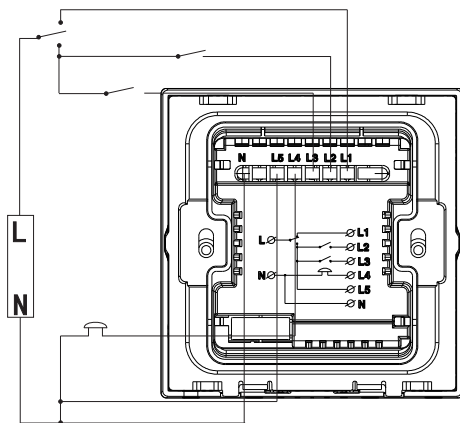
- Terminal capacity: 2 × 1 mm²
- 2 × 1.5 mm²
- 1 × 2.5 mm²
- 1 × 4 mm²

Recommended screwdriver size: 4 mm flat blade
Recommended stripping length: 12 mm
Recommended terminal tightening torque: 0.5Nm

5.2 Circuit diagrams



2 824 17/17m
K8/H251-HK



K8/H252-HK

6. TECHNICAL CHARACTERISTICS

6.1 Material characteristics

Plate: Poly(methyl methacrylate)

Frame: Polycarbonate

Base: Polycarbonate

Self-extinguishing:

+ 850° C / 30 s for insulating parts holding live parts in place

+ 650° C / 30 s for other parts made of insulating materials

6.2 Electrical characteristics

Voltage: 220VAC

Current: 3A

6.3 Climatic characteristics

Storage temperatures: -10°C to +70°C

Operating temperatures: -5°C to +50°C

6.4 Mechanical characteristics

Impact test: Ik04

Protection against liquids: Ip20

7. CLEANING

Surface cleaning with a soft, slightly damp cloth.

Do not use: acetone, tar remover, trichloroethylene

8. CONFORMITY - APPROVALS

Conform to IEC 60669-2-1.